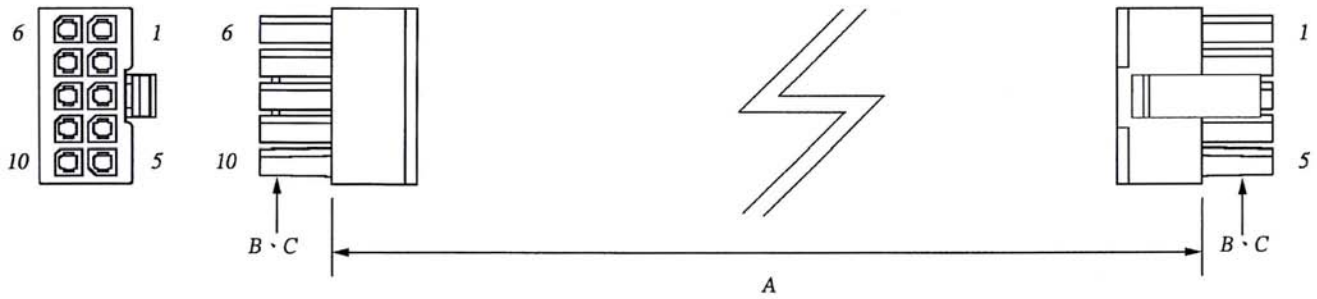
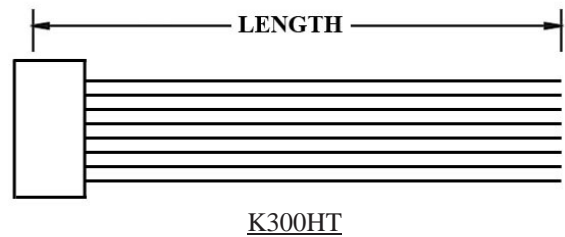
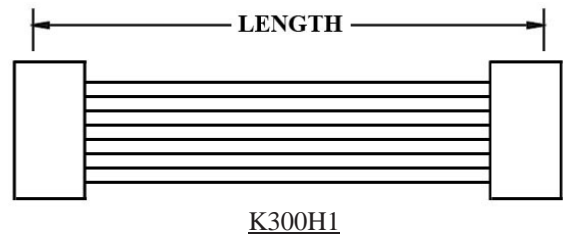
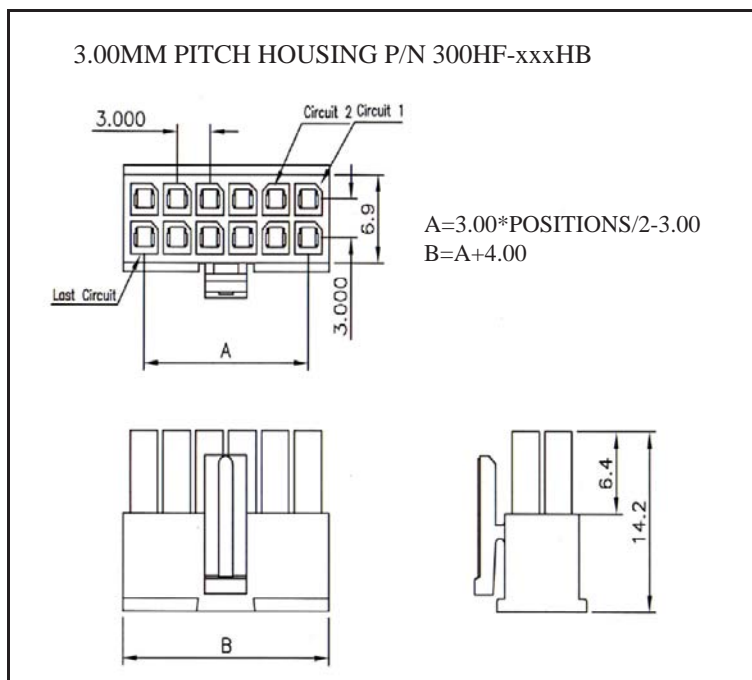


WIRE HARNESS CABLE WITH 2*3.00MM PITCH CRIMPED POWER HOUSINGS



K300HF



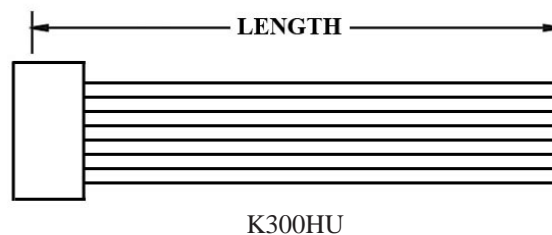
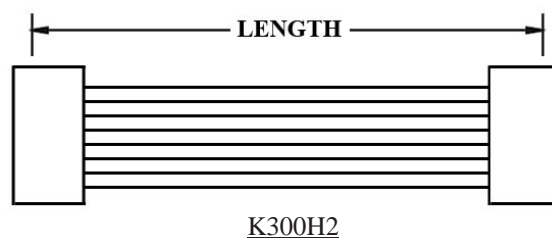
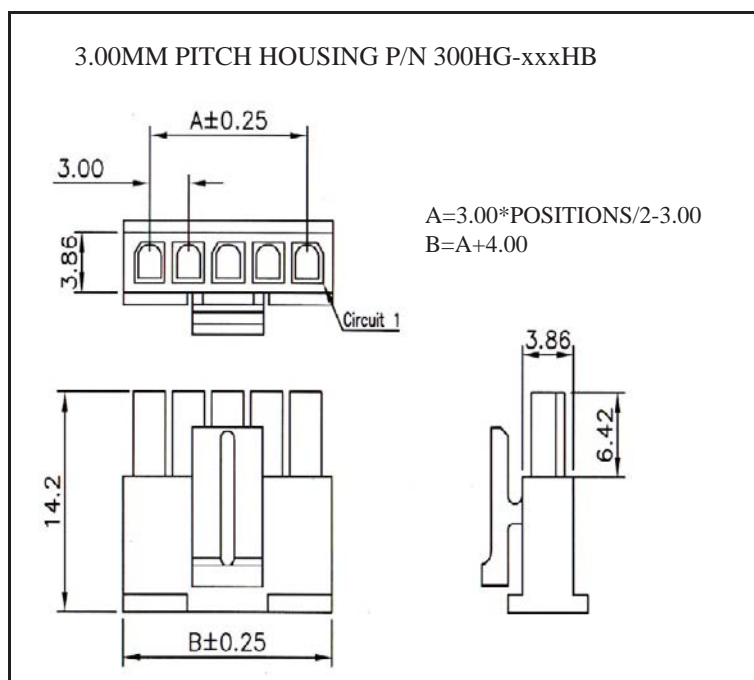
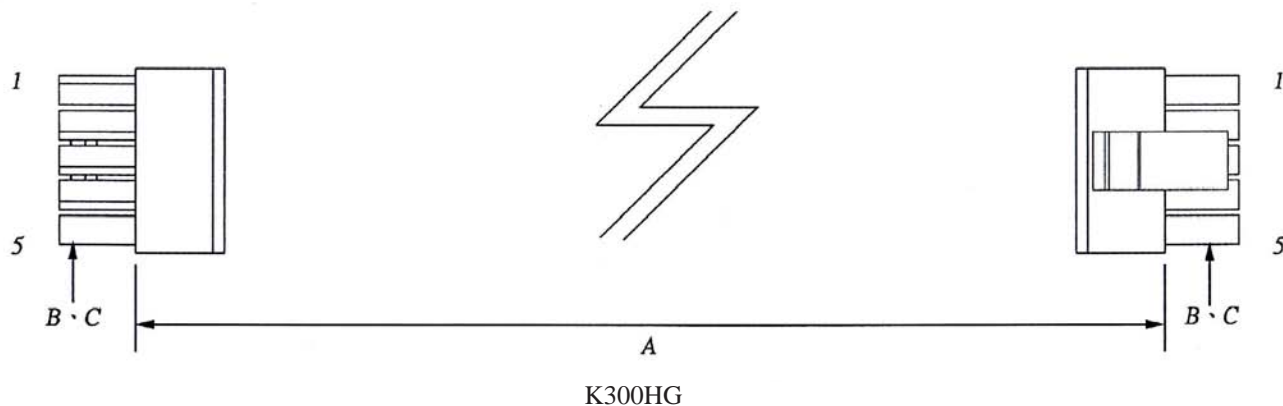
ORDERING INFORMATION:

P/N K xxxxxx xx - xx C M

1 2 3

1. HOUSING TYPE AT 2 ENDS:
 "300HF" 3.00MM PITCH DOUBLE ROW HOUSING TO HOUSING (WIRING 1:1)
 "300H1" DITTO, BUT SAME DIRECTION OF CONTACTS AT 2 ENDS (WIRING 1:N)
 "300HT" DITTO, BUT HOUSING TO 3MM TINNED END
2. NO. OF CONTACTS:
 02~24
3. LENGTH IN CM (CENTIMETERS)

WIRE HARNESS CABLE WITH 2*3.00MM PITCH CRIMPED POWER HOUSINGS



ORDERING INFORMATION:

P/N **K** 1 2 3 - XX C M

1. HOUSING TYPE AT 2 ENDS:

"300HG" 3.00MM PITCH SINGLE ROW HOUSING TO HOUSING (WIRING 1:1)

"300H2" DITTO, BUT SAME DIRECTION OF CONTACTS AT 2 ENDS (WIRING 1:N)

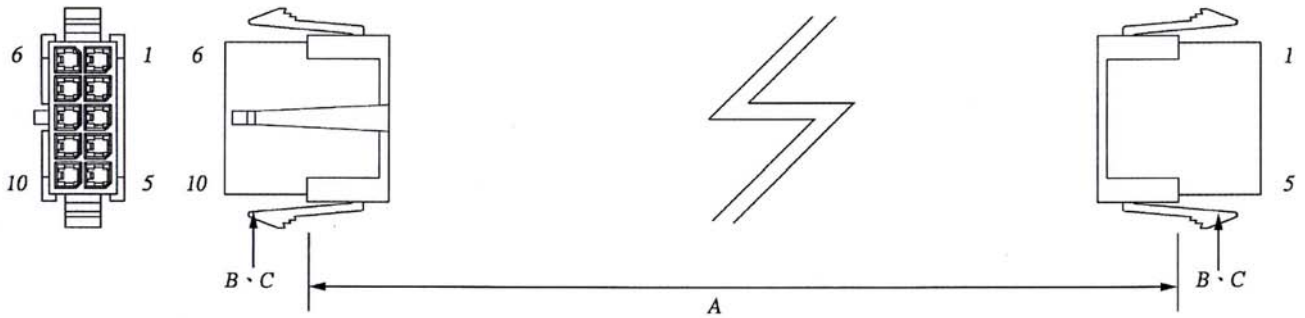
"300HU" DITTO, BUT HOUSING TO 3MM TINNED END

2. NO. OF CONTACTS:

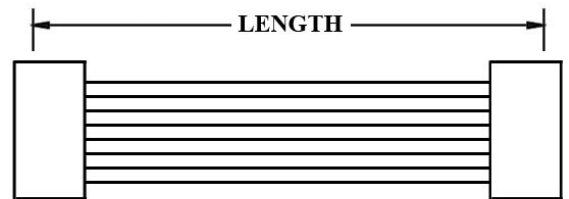
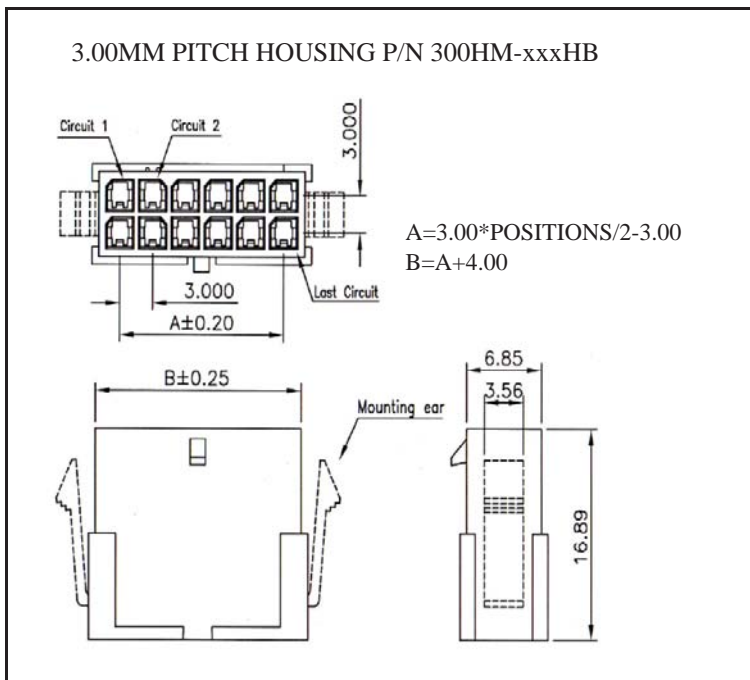
02~12

3. LENGTH IN CM (CENTIMETERS)

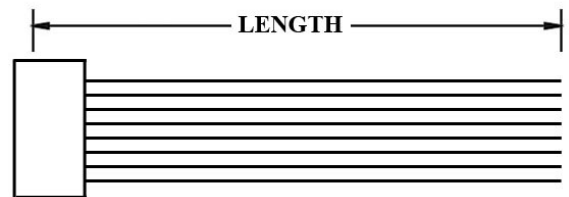
WIRE HARNESS CABLE WITH 2*3.00MM PITCH CRIMPED POWER HOUSINGS



K300HM



K300H3



K300HV

ORDERING INFORMATION:

P/N K 1 2 3 XXXXXX - XX CM

1. HOUSING TYPE AT 2 ENDS:

"300HM" 3.00MM PITCH DOUBLE ROW HOUSING TO HOUSING (WIRING 1:1)

"300H3" DITTO, BUT SAME DIRECTION OF CONTACTS AT 2 ENDS (WIRING 1:N)

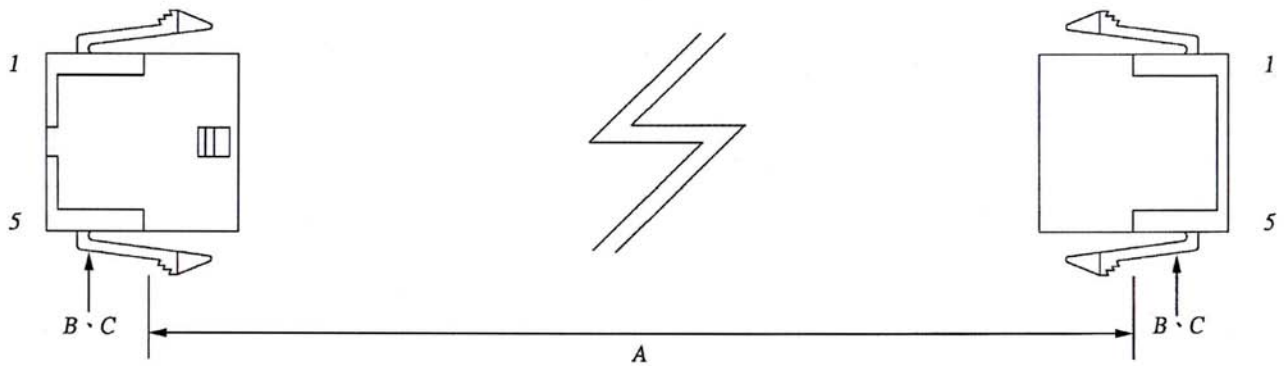
"300HV" DITTO, BUT HOUSING TO 3MM TINNED END

2. NO. OF CONTACTS:

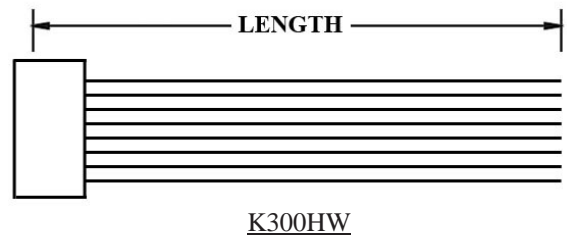
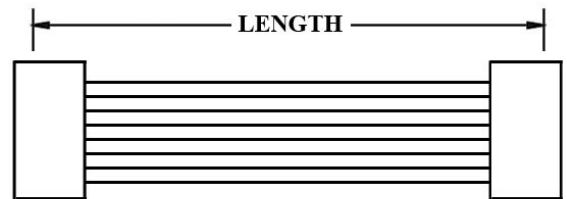
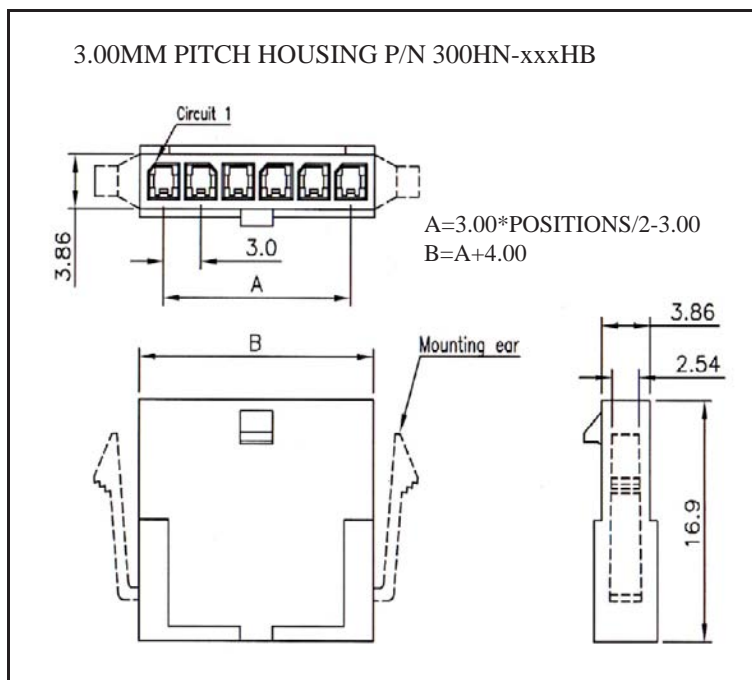
02~24

3. LENGTH IN CM (CENTIMETERS)

WIRE HARNESS CABLE WITH 2*3.00MM PITCH CRIMPED POWER HOUSINGS



K300HN

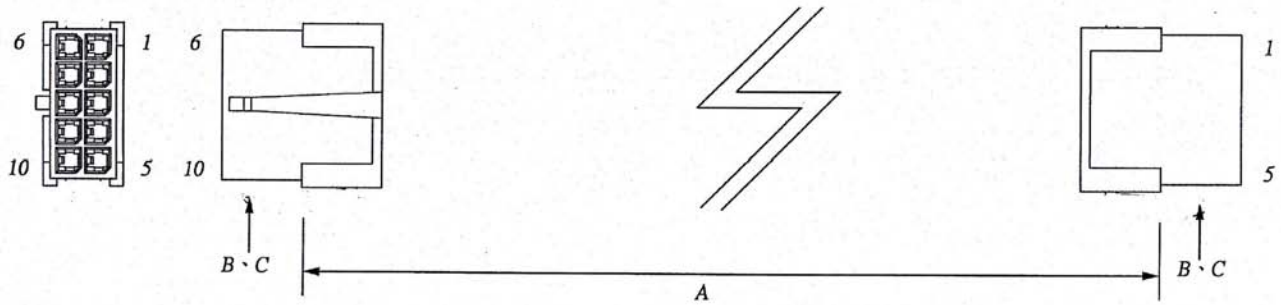


ORDERING INFORMATION:

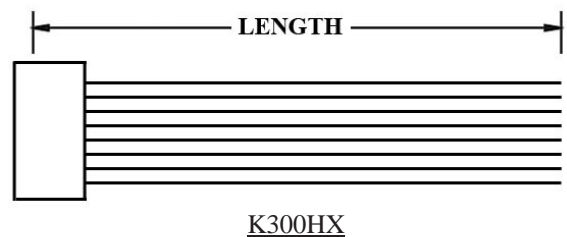
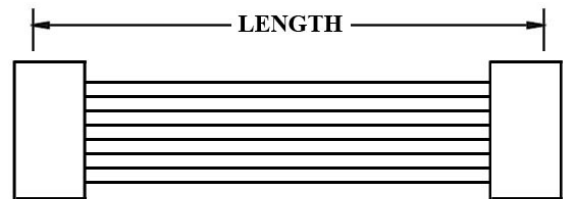
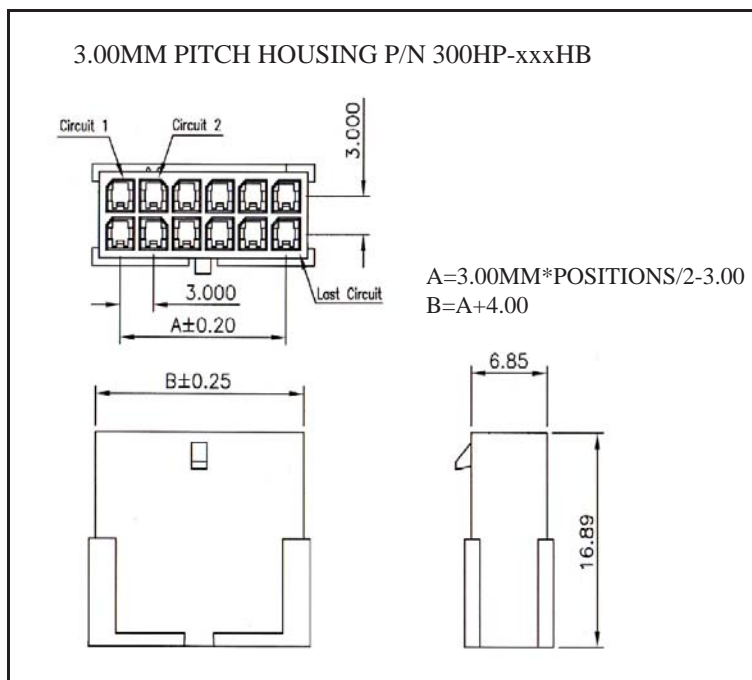
P/N K 1 2 3 - xx C M

- HOUSING TYPE AT 2 ENDS:
 "300HN" 3.00MM PITCH SINGLE ROW HOUSING TO HOUSING (WIRING 1:1)
 "300H4" DITTO, BUT SAME DIRECTION OF CONTACTS AT 2 ENDS (WIRING 1:N)
 "300HW" DITTO, BUT HOUSING TO 3MM TINNED END
- NO. OF CONTACTS:
 02~12
- LENGTH IN CM (CENTIMETERS)

WIRE HARNESS CABLE WITH 2*3.00MM PITCH CRIMPED POWER HOUSINGS



K300HP



ORDERING INFORMATION:

P/N K 1 2 3 CM

1. HOUSING TYPE AT 2 ENDS:

"300HP" 3.00MM PITCH DOUBLE ROW HOUSING TO HOUSING (WIRING 1:1)

"300H5" DITTO, BUT SAME DIRECTION OF CONTACTS AT 2 ENDS (WIRING 1:N)

"300HX" DITTO, BUT HOUSING TO 3MM TINNED END

2. NO. OF CONTACTS:

02~24

3. LENGTH IN CM (CENTIMETERS)

