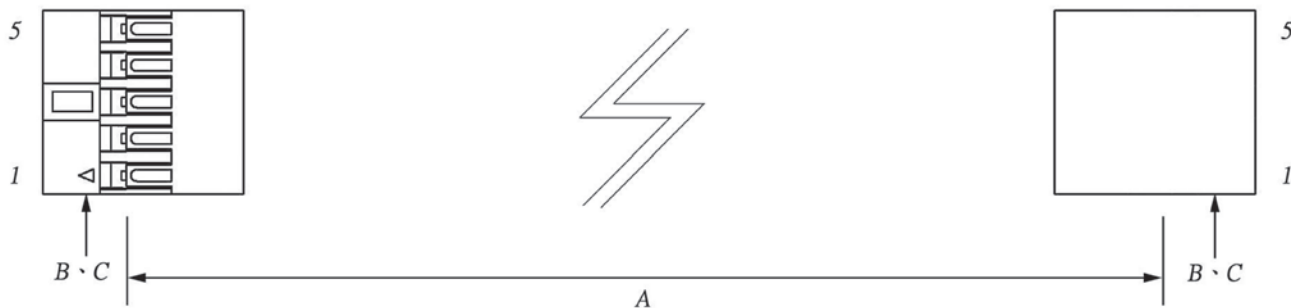
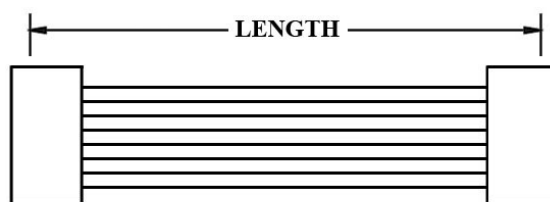
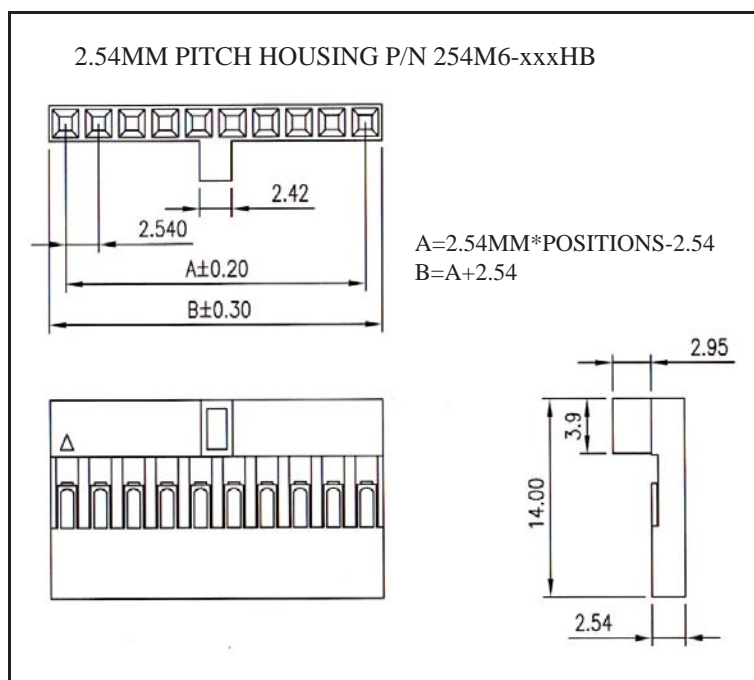


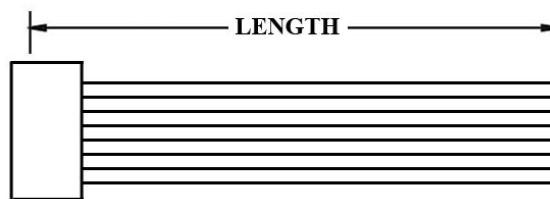
WIRE HARNESS CABLE WITH 2*2.54MM PITCH WIRE-TO-BOARD CRIMPED HOUSINGS



K254M6



K254M7



K254MT

ORDERING INFORMATION:

P/N K 1 2 3 CM

1. HOUSING TYPE AT 2 ENDS:

"254M6" 2.54MM PITCH DPT TYPE HOUSING TO HOUSING (WIRING 1:1)

"254M7" DITTO, BUT SAME DIRECTION OF CONTACTS AT 2 ENDS (WIRING 1:N)

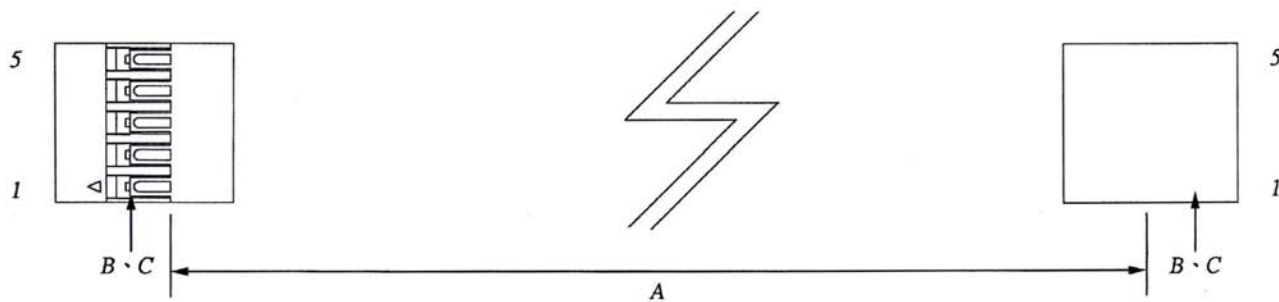
"254MT" DITTO, BUT HOUSING TO 3MM TINNED END

2. NO. OF CONTACTS:

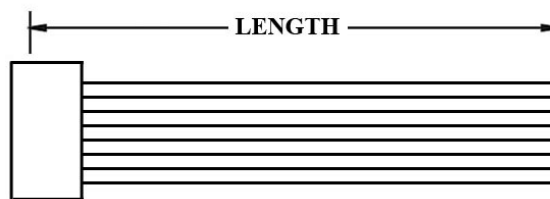
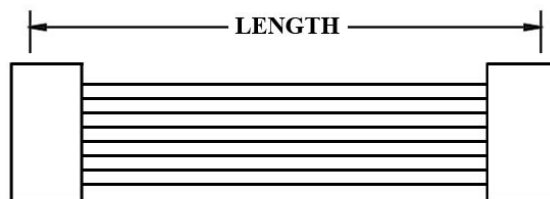
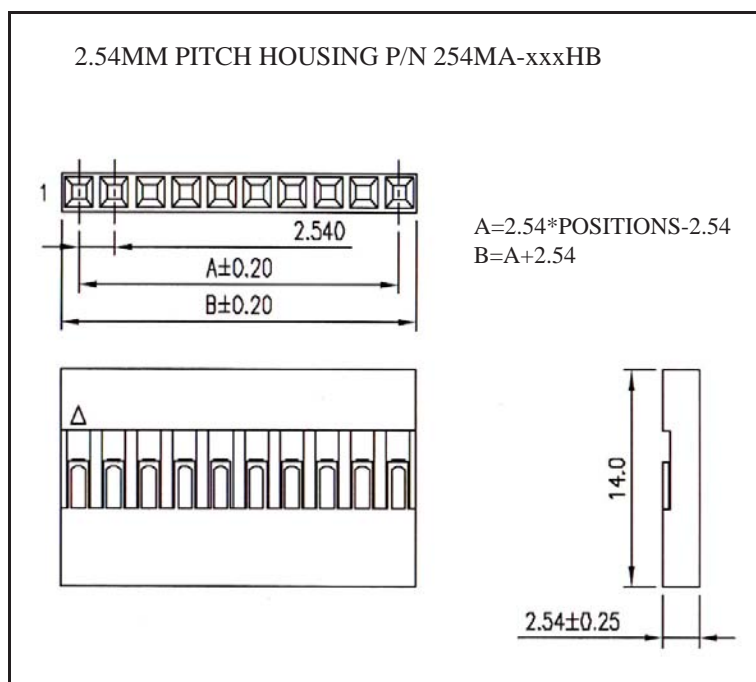
02~40

3. LENGTH IN CM (CENTIMETERS)

WIRE HARNESS CABLE WITH 2*2.54MM PITCH WIRE-TO-BOARD CRIMPED HOUSINGS



K254MA



ORDERING INFORMATION:

P/N **K** 1 2 3 C M

1. HOUSING TYPE AT 2 ENDS:

"254MA" 2.54MM PITCH DPT TYPE HOUSING TO HOUSING (WIRING 1:1)

"254MN" DITTO, BUT SAME DIRECTION OF CONTACTS AT 2 ENDS (WIRING 1:N)

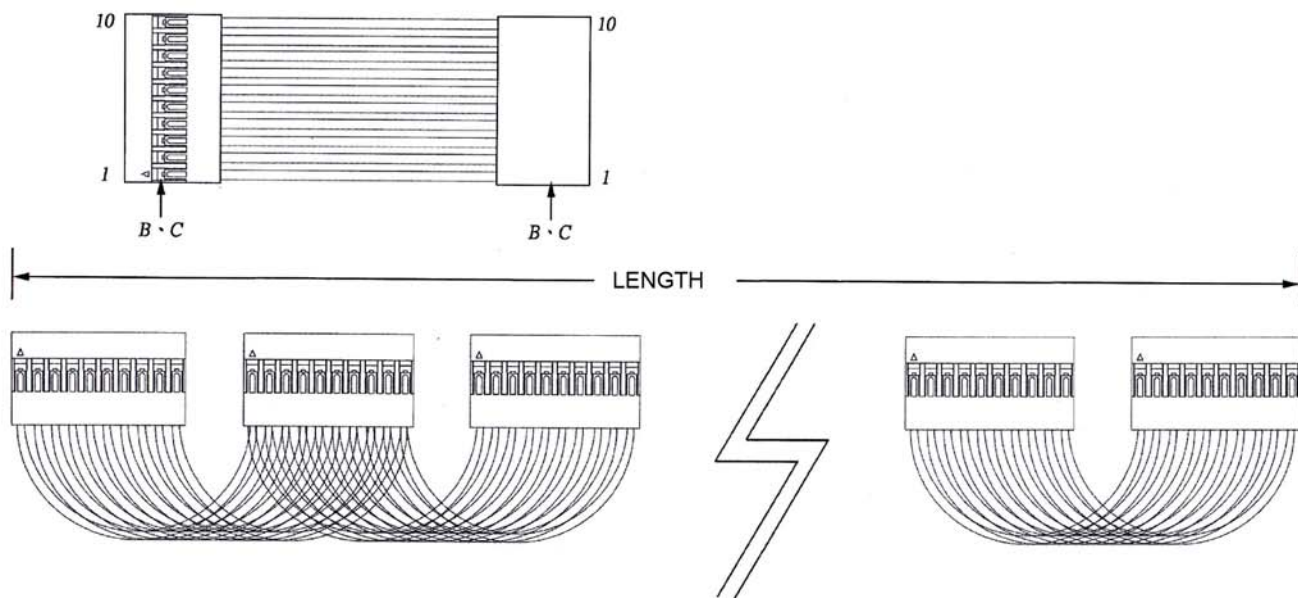
"254MU" DITTO, BUT HOUSING TO 3MM TINNED END

2. NO. OF CONTACTS:

02~40

3. LENGTH IN CM (CENTIMETERS)

WIRE HARNESS CABLE WITH N*2.54MM PITCH WIRE-TO-BOARD CRIMPED HOUSINGS



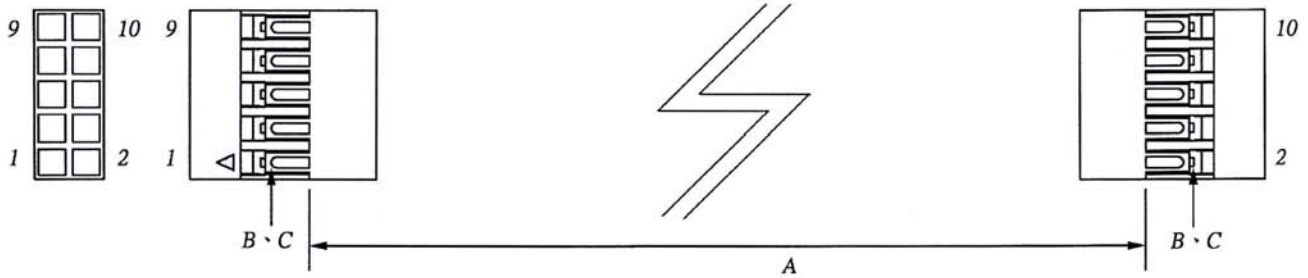
K254MA

ORDERING INFORMATION:

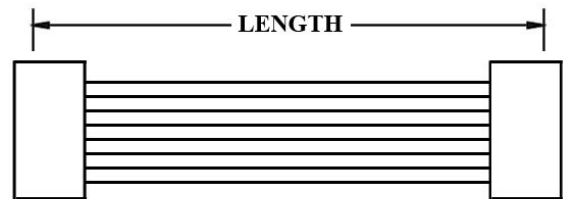
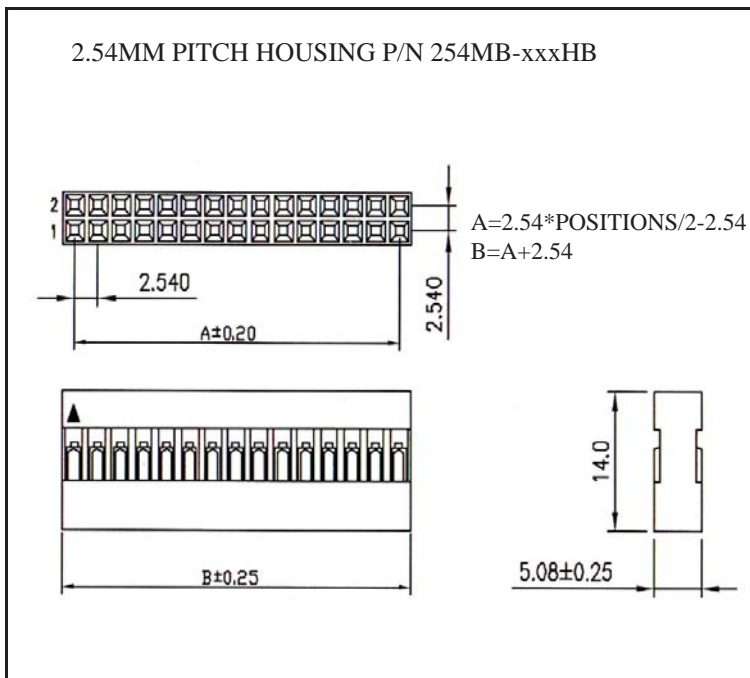
P/N **K** xxxxxx₁ xx₂ xx₃ **C M** xx₄

1. HOUSING TYPE AT 2 ENDS:
"254MA" 2.54MM PITCH DPT TYPE HOUSING TO HOUSING (WIRING 1:1)
2. NO. OF CONTACTS:
02~40
3. LENGTH IN CM (CENTIMETERS)
4. NO. OF HOUSINGS:
03, 04, 05,, 19, 20, ...etc.

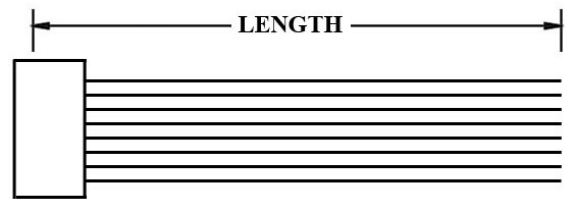
WIRE HARNESS CABLE WITH 2*2.54MM PITCH WIRE-TO-BOARD CRIMPED HOUSINGS



K254MB



K254MP



K254MV

ORDERING INFORMATION:

P/N **K** 1 2 3 - **XX** **CM**

1. HOUSING TYPE AT 2 ENDS:
 "254MB" 2.54MM PITCH DPT TYPE HOUSING TO HOUSING (WIRING 1:1)
 "254MP" DITTO, BUT SAME DIRECTION OF CONTACTS AT 2 ENDS (WIRING 1:N)
 "254MV" DITTO, BUT HOUSING TO 3MM TINNED END
2. NO. OF CONTACTS:
 04~80
3. LENGTH IN CM (CENTIMETERS)

WIRE HARNESS CABLE WITH 2*2.54MM PITCH WIRE-TO-BOARD CRIMPED HOUSINGS

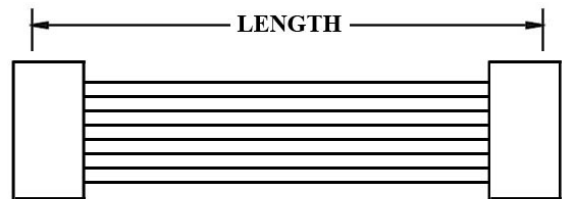
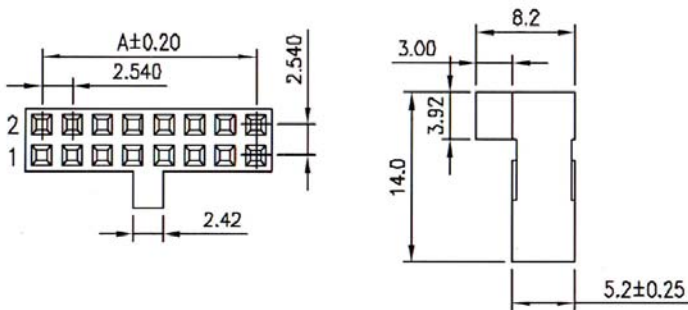


K254MC

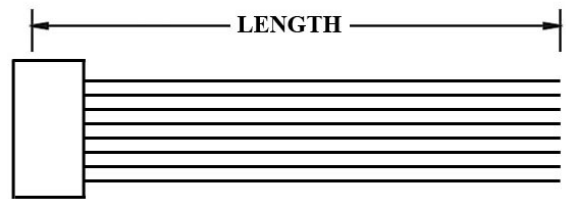
2.54MM PITCH HOUSING P/N 254MC-xxxHB

$$A = 2.54 * \text{POSITIONS} - 2.54$$

$$B = A + 2.54$$



K254MQ



K254MW

ORDERING INFORMATION:

P/N **K** 1 2 3 **C M**

1. HOUSING TYPE AT 2 ENDS:

"254MC" 2.54MM PITCH DPT TYPE HOUSING TO HOUSING (WIRING 1:1)

"254MQ" DITTO, BUT SAME DIRECTION OF CONTACTS AT 2 ENDS (WIRING 1:N)

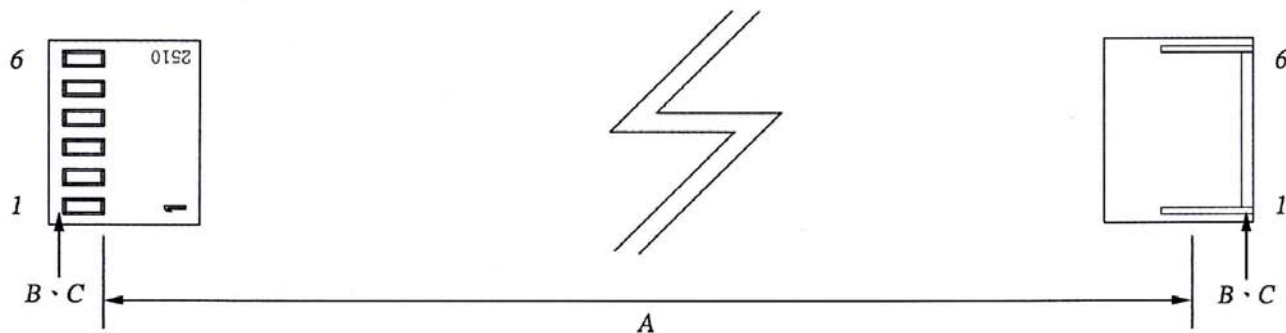
"254MW" DITTO, BUT HOUSING TO 3MM TINNED END

2. NO. OF CONTACTS:

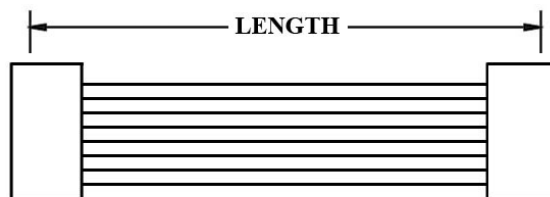
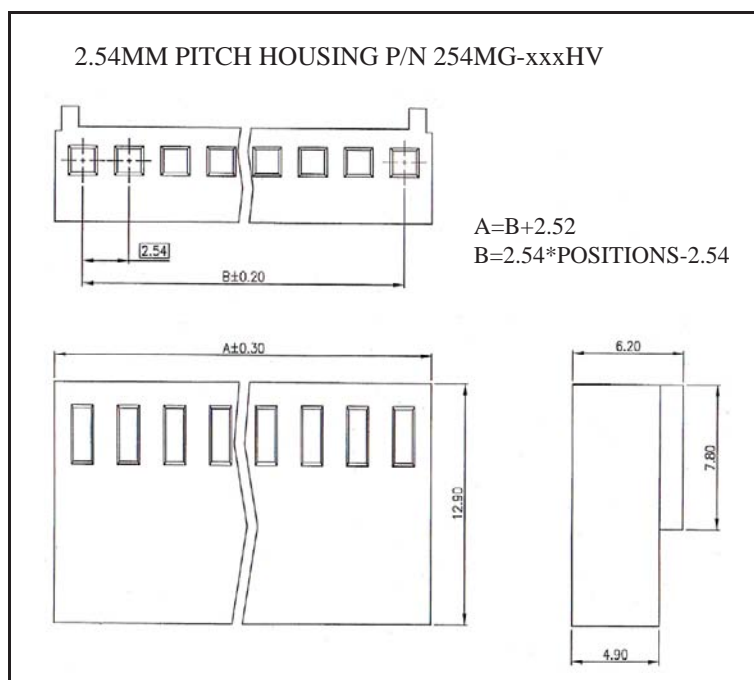
04~58

3. LENGTH IN CM (CENTIMETERS)

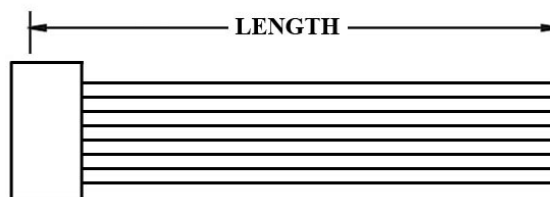
WIRE HARNESS CABLE WITH 2*2.54MM PITCH WIRE-TO-BOARD CRIMPED HOUSINGS



K254MG



K254MR



K254MX

ORDERING INFORMATION:

P/N K 1 2 3 XXXXXX XX C M

1. HOUSING TYPE AT 2 ENDS:

"254MG" 2.54MM PITCH MX TYPE HOUSING TO HOUSING (WIRING 1:1)

"254MR" DITTO, BUT SAME DIRECTION OF CONTACTS AT 2 ENDS (WIRING 1:N)

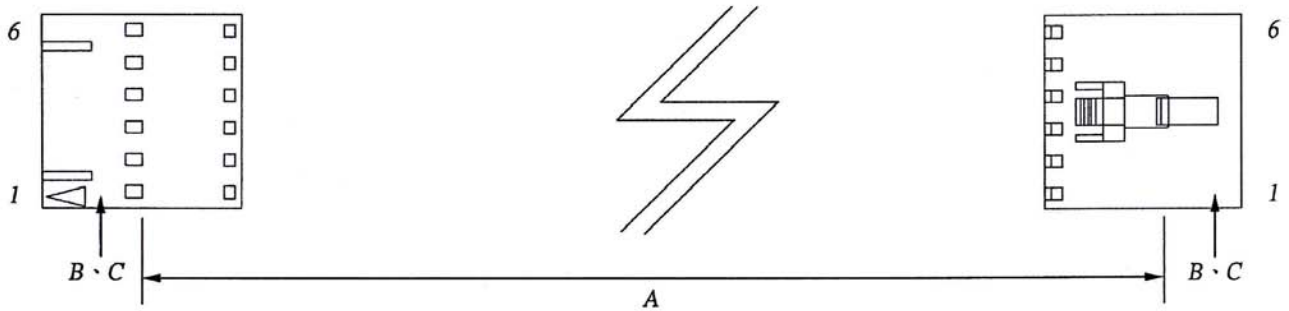
"254MX" DITTO, BUT HOUSING TO 3MM TINNED END

2. NO. OF CONTACTS:

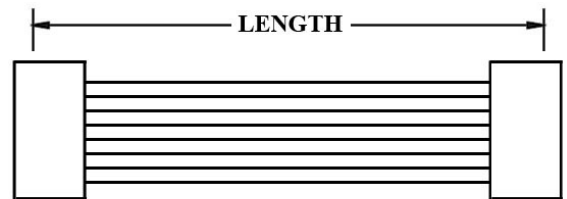
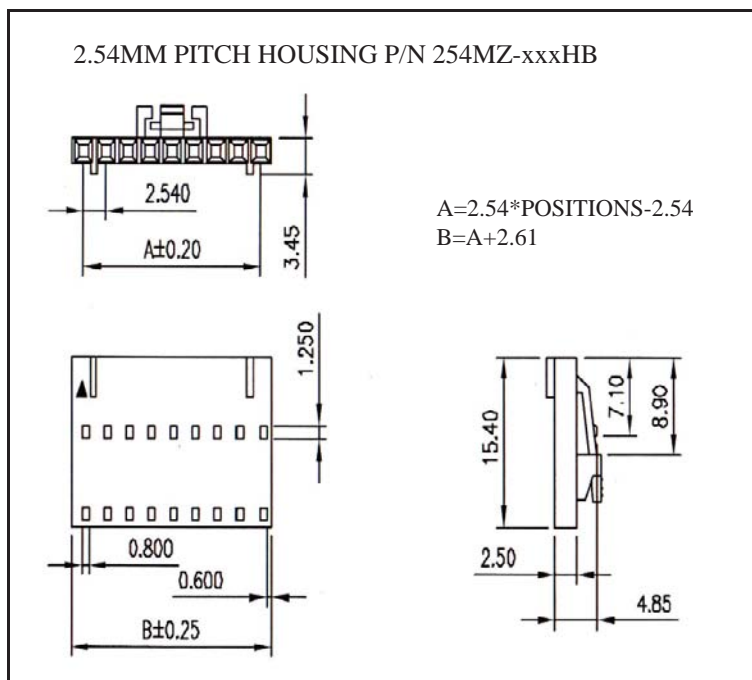
02, 03, 04, 05, 06, 07, 08, 09, 10, 11, 12, 13, 14, 15

3. LENGTH IN CM (CENTIMETERS)

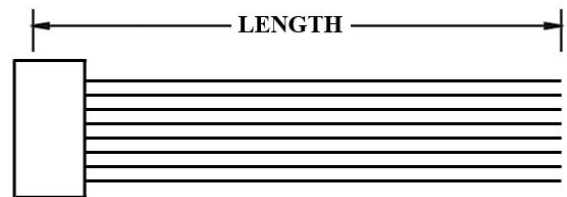
WIRE HARNESS CABLE WITH 2*2.54MM PITCH WIRE-TO-BOARD CRIMPED HOUSINGS



K254MZ



K254MS



K254MY

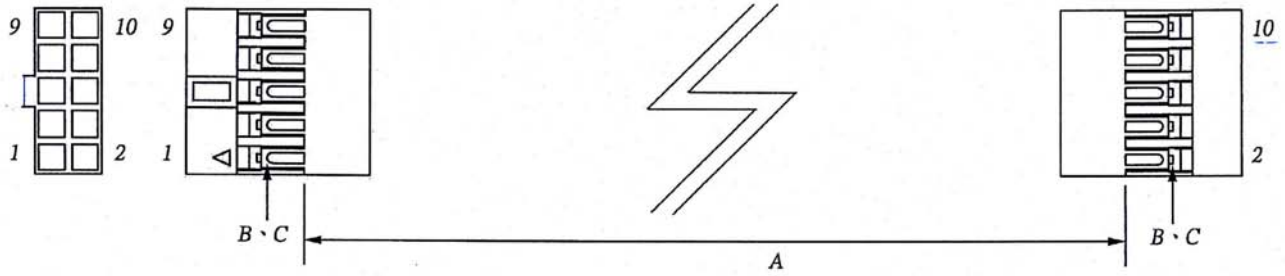
ORDERING INFORMATION:

P/N K xxxxxx xx C M

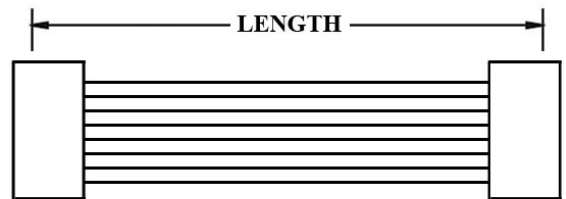
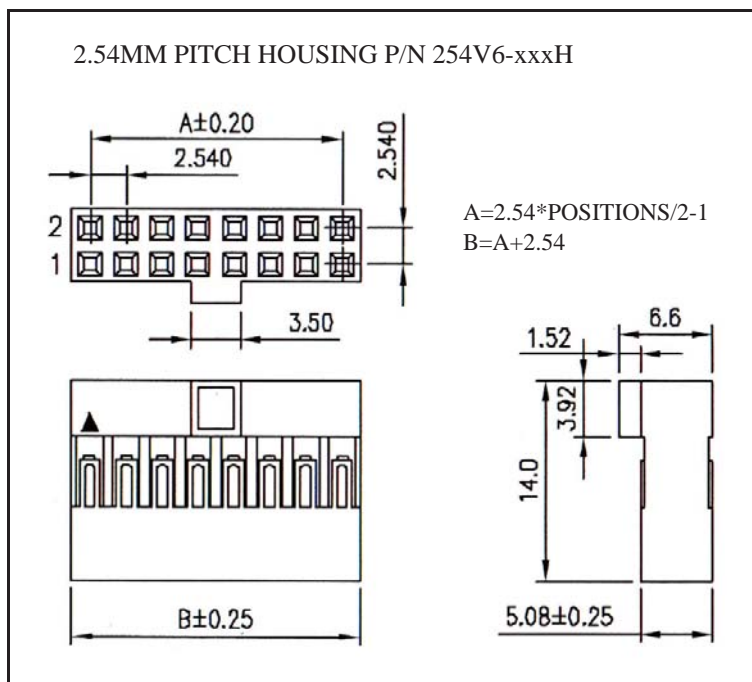
1 2 3

1. HOUSING TYPE AT 2 ENDS:
 "254MZ" 2.54MM PITCH MX TYPE HOUSING TO HOUSING (WIRING 1:1)
 "254MS" DITTO, BUT SAME DIRECTION OF CONTACTS AT 2 ENDS (WIRING 1:1)
 "254MY" DITTO, BUT HOUSING TO 3MM TINNED END
2. NO. OF CONTACTS:
 02, 03, 04, 05, 06, 07, 08, 09, 10, 11, 12, 13, 14, 15, 16
3. LENGTH IN CM (CENTIMETERS)

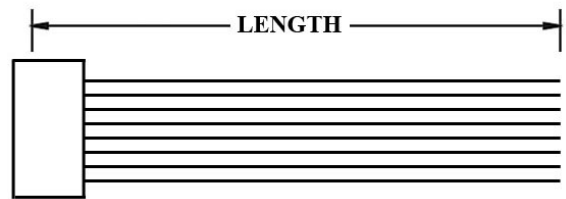
WIRE HARNESS CABLE WITH 2*2.54MM PITCH WIRE-TO-BOARD CRIMPED HOUSINGS



K254V6



K254VP



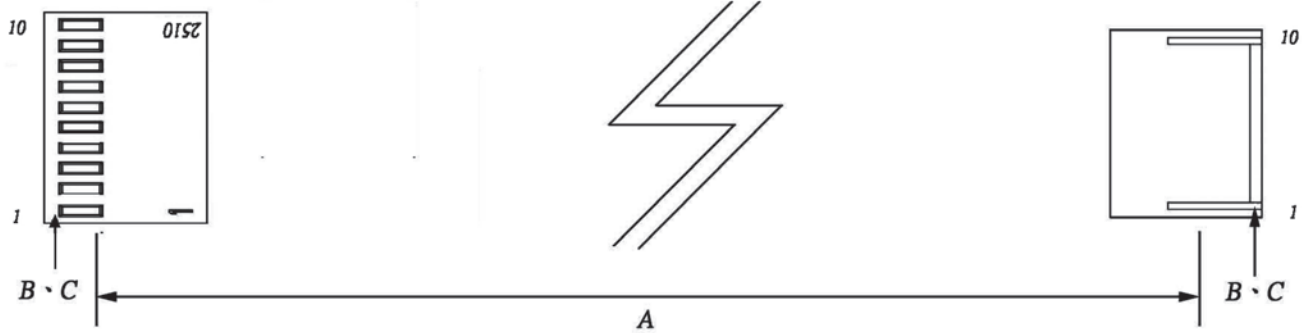
K254VU

ORDERING INFORMATION:

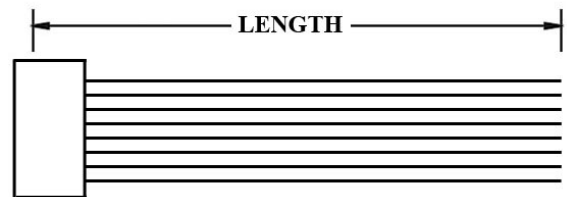
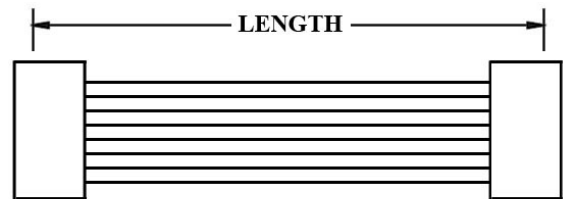
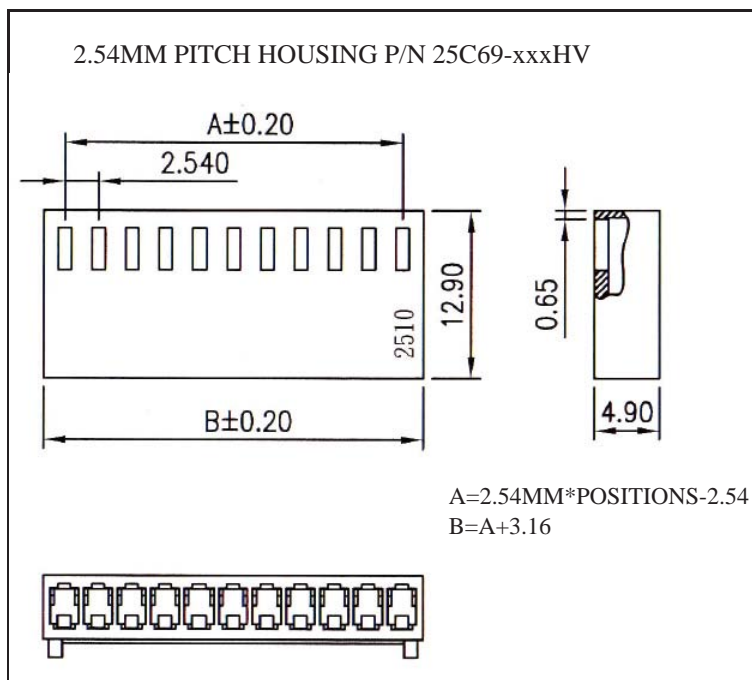
P/N K 1 2 3 XXXXXX - XX C M

- HOUSING TYPE AT 2 ENDS:
 "254V6" 2.54MM PITCH DPT TYPE HOUSING TO HOUSING (WIRING 1:1)
 "254VP" DITTO, BUT SAME DIRECTION OF CONTACTS AT 2 ENDS (WIRING 1:N)
 "254VU" DITTO, BUT HOUSING TO 3MM TINNED END
- NO. OF CONTACTS:
 06~80
- LENGTH IN CM (CENTIMETERS)

WIRE HARNESS CABLE WITH 2*2.54MM PITCH WIRE-TO-BOARD CRIMPED HOUSINGS



K25C69

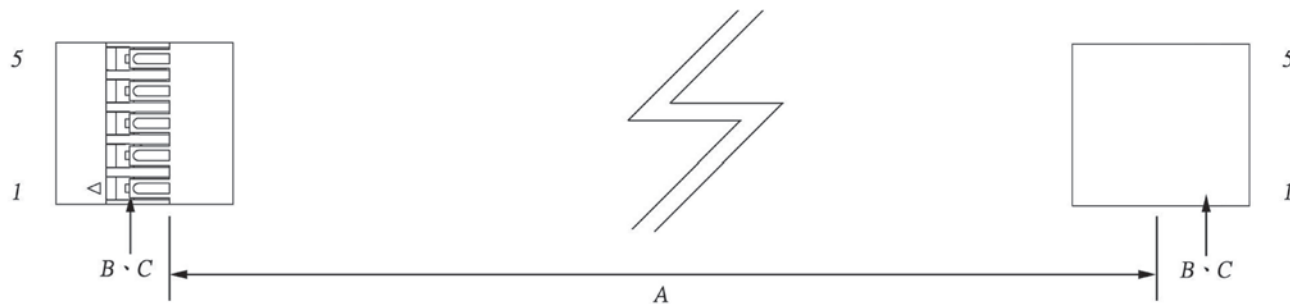


ORDERING INFORMATION:

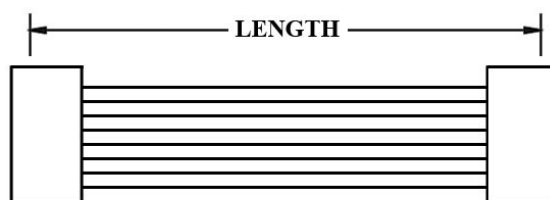
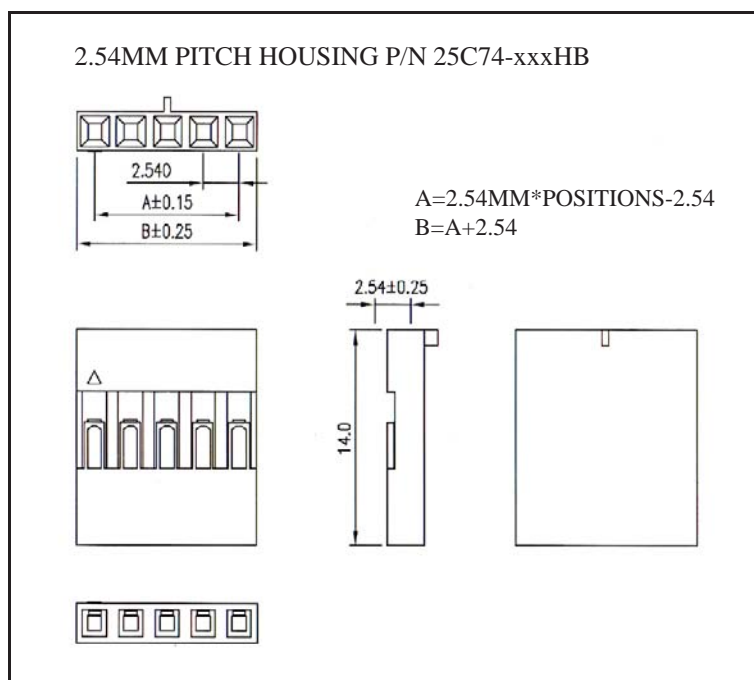
P/N K 1 2 3 CM

1. HOUSING TYPE AT 2 ENDS:
 "25C69" 2.54MM PITCH MX TYPE HOUSING TO HOUSING (WIRING 1:1)
 "25C6N" DITTO, BUT SAME DIRECTION OF CONTACTS AT 2 ENDS (WIRING 1:N)
 "25C6T" DITTO, BUT HOUSING TO 3MM TINNED END
2. NO. OF CONTACTS:
 02~20
3. LENGTH IN CM (CENTIMETERS)

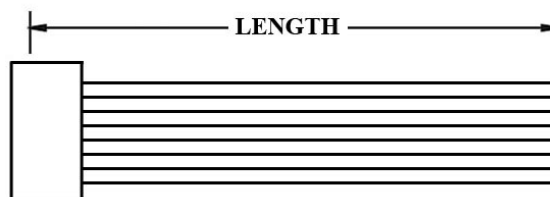
WIRE HARNESS CABLE WITH 2*2.54MM PITCH WIRE-TO-BOARD CRIMPED HOUSINGS



K25C74



K25C7N



K25C7T

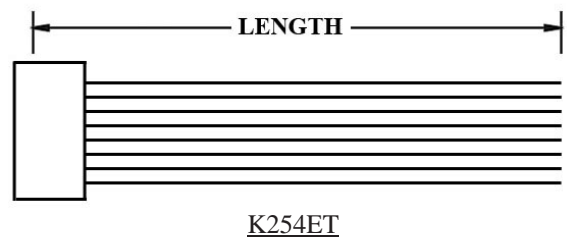
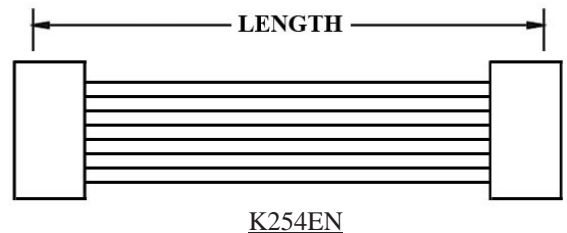
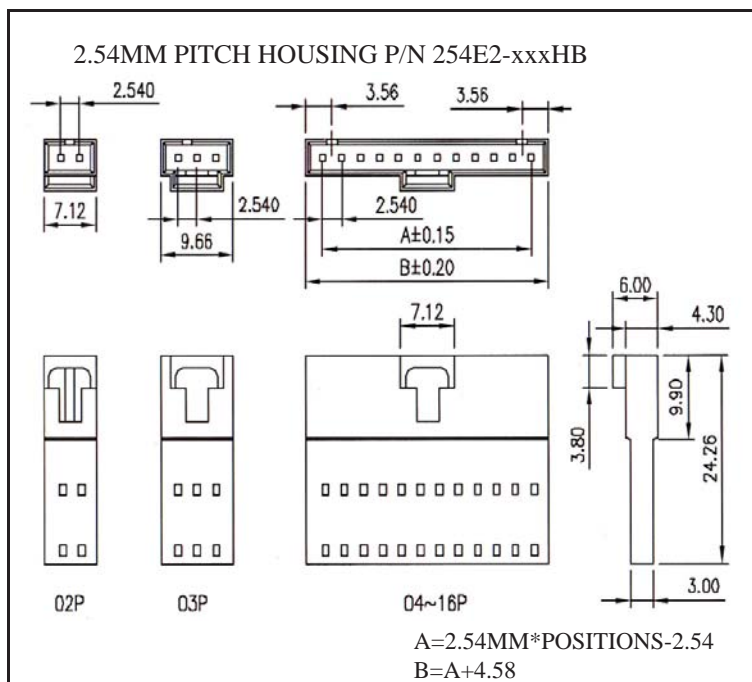
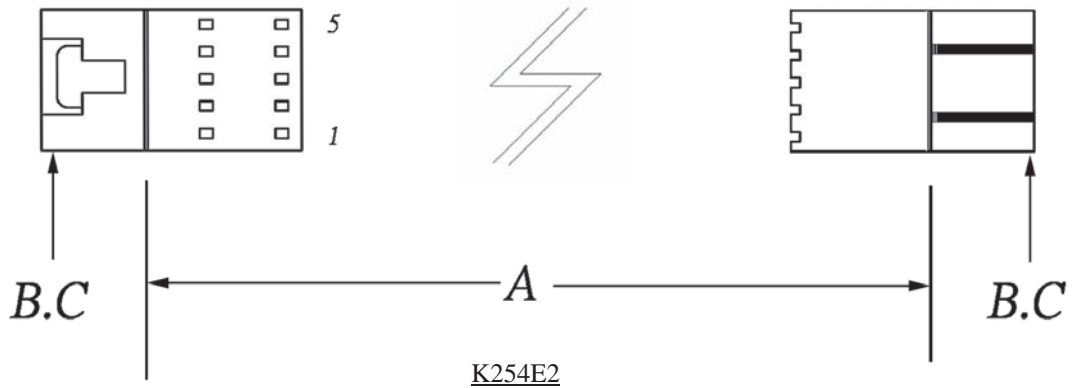
ORDERING INFORMATION:

P/N K xxxxxx xx - xx C M

1 2 3

1. HOUSING TYPE AT 2 ENDS:
 "25C74" 2.54MM PITCH DPT TYPE HOUSING TO HOUSING (WIRING 1:1)
 "25C7N" DITTO, BUT SAME DIRECTION OF CONTACTS AT 2 ENDS (WIRING 1:N)
 "25C7T" DITTO, BUT HOUSING TO 3MM TINNED END
2. NO. OF CONTACTS:
 01, 02, 03, 04, 05, 06
3. LENGTH IN CM (CENTIMETERS)

WIRE HARNESS CABLE WITH 2*2.54MM PITCH WIRE-TO-BOARD CRIMPED HOUSINGS

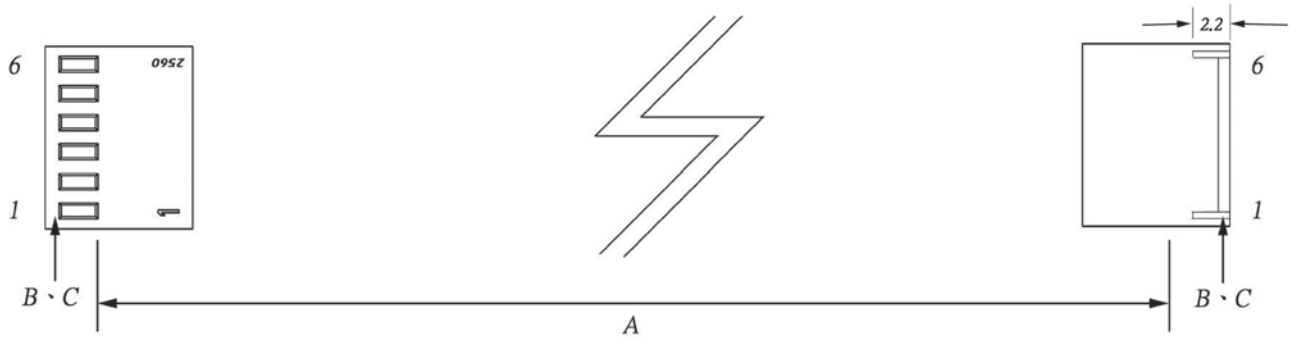


ORDERING INFORMATION:

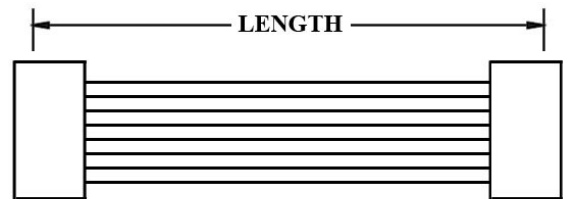
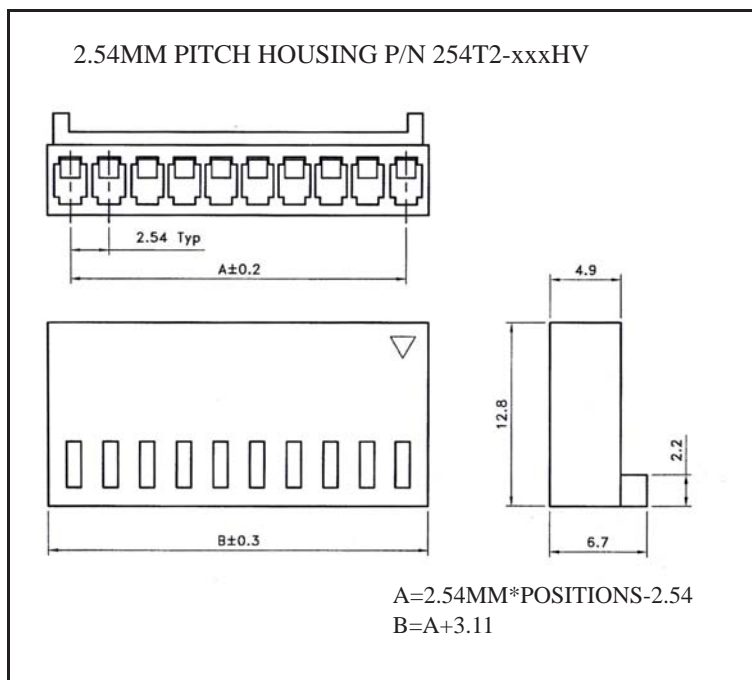
P/N **K** 1 2 3 C M

1. HOUSING TYPE AT 2 ENDS:
 "254E2" 2.54MM PITCH SINGLE ROW HOUSING TO HOUSING (WIRING 1:1)
 "254EN" DITTO, BUT SAME DIRECTION OF CONTACTS AT 2 ENDS (WIRING 1:N)
 "254ET" DITTO, BUT HOUSING TO 3MM TINNED END
2. NO. OF CONTACTS:
 02~16
3. LENGTH IN CM (CENTIMETERS)

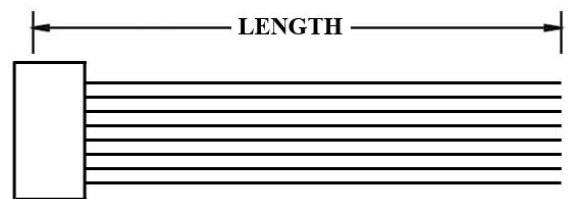
WIRE HARNESS CABLE WITH 2*2.54MM PITCH WIRE-TO-BOARD CRIMPED HOUSINGS



K254T2



K254TN



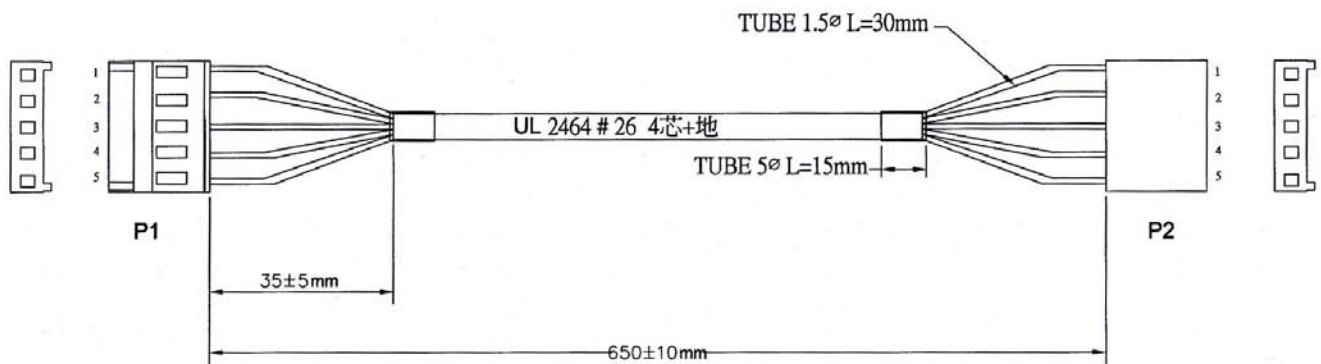
K254TT

ORDERING INFORMATION:

P/N K 1 2 3 CM

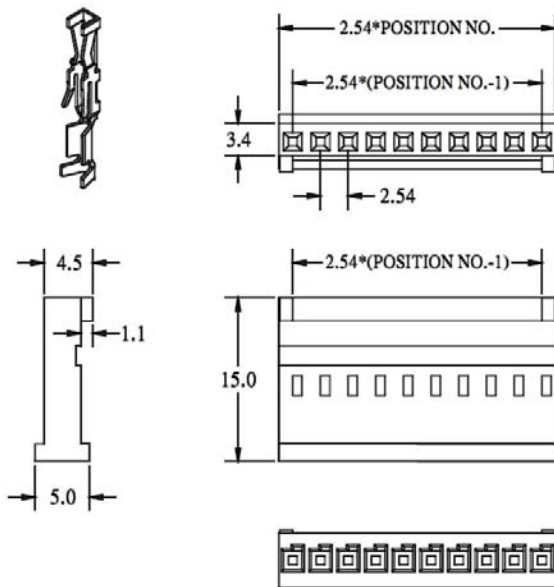
- HOUSING TYPE AT 2 ENDS:
 "254T2" 2.54MM PITCH SINGLE ROW HOUSING TO HOUSING (WIRING 1:1)
 "254TN" DITTO, BUT SAME DIRECTION OF CONTACTS AT 2 ENDS (WIRING 1:N)
 "254TT" DITTO, BUT HOUSING TO 3MM TINNED END
- NO. OF CONTACTS:
 02~12
- LENGTH IN CM (CENTIMETERS)

**AWG26/U2464 ROUND CABLE
WITH 2*2.54MM WIRE TO BOARD HOUSINGS**



P/N K4AH005-65CMB

2.54MM PITCH WIRE TO BOARD SINGLE ROW HOUSING



ORDERING INFORMATION:

P/N K 1 2 3 4

1. CONSTRUCTION TYPE:
4AH
2. NO. OF CONTACTS:
002~020
3. LENGTH IN CM (CENTIMETERS)
4. COLOR OF TWO IDC CONNECTORS:
"B" BLACK