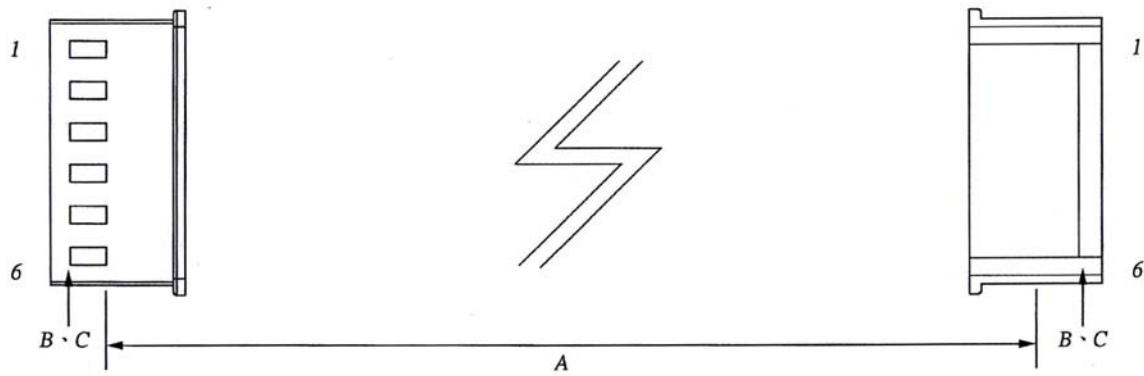
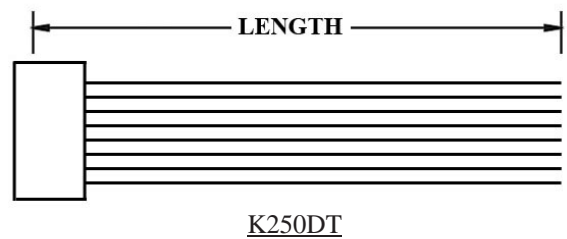
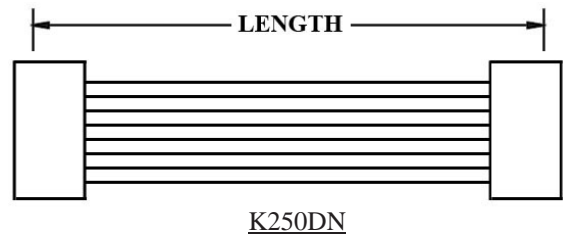
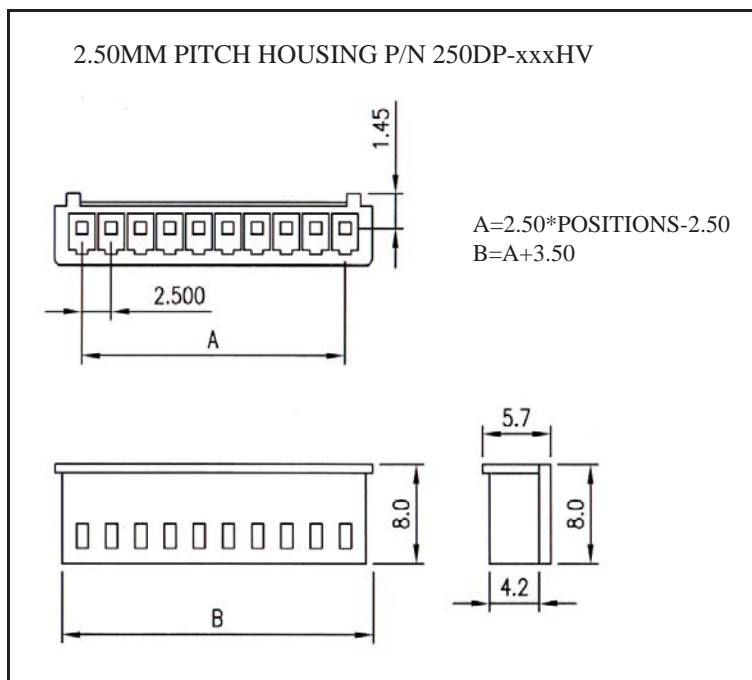


WIRE HARNESS CABLE WITH 2*2.50MM PITCH WIRE-TO-BOARD CRIMPED HOUSINGS



K250DP



ORDERING INFORMATION:

P/N K 1 2 3 XXXXXX - XX C M

1. HOUSING TYPE AT 2 ENDS:

"250DP" 2.50MM PITCH DPT TYPE HOUSING TO HOUSING (WIRING 1:1)

"250DN" DITTO, BUT SAME DIRECTION OF CONTACTS AT 2 ENDS (WIRING 1:N)

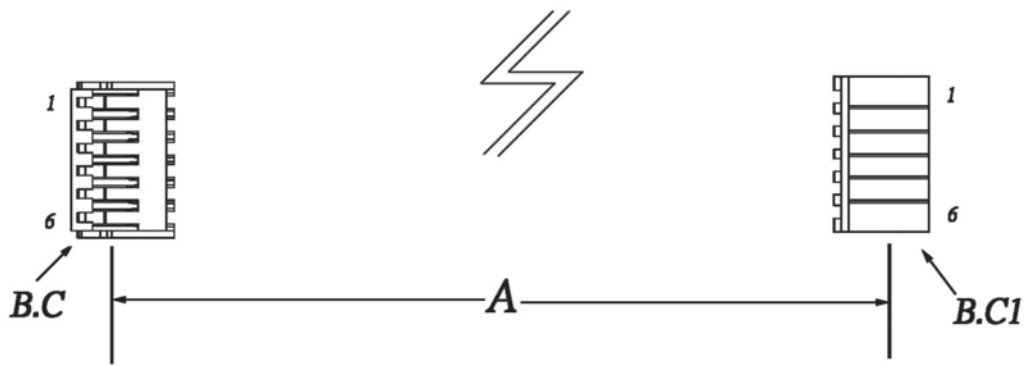
"250DT" DITTO, BUT HOUSING TO 3MM TINNED END

2. NO. OF CONTACTS:

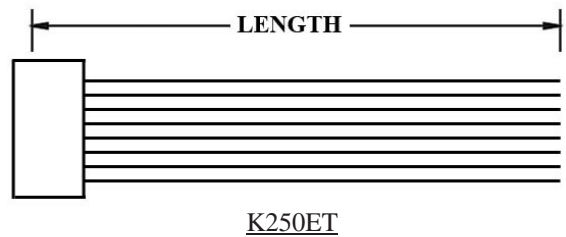
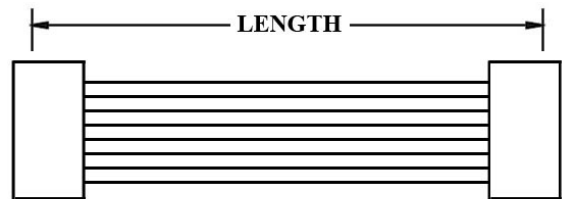
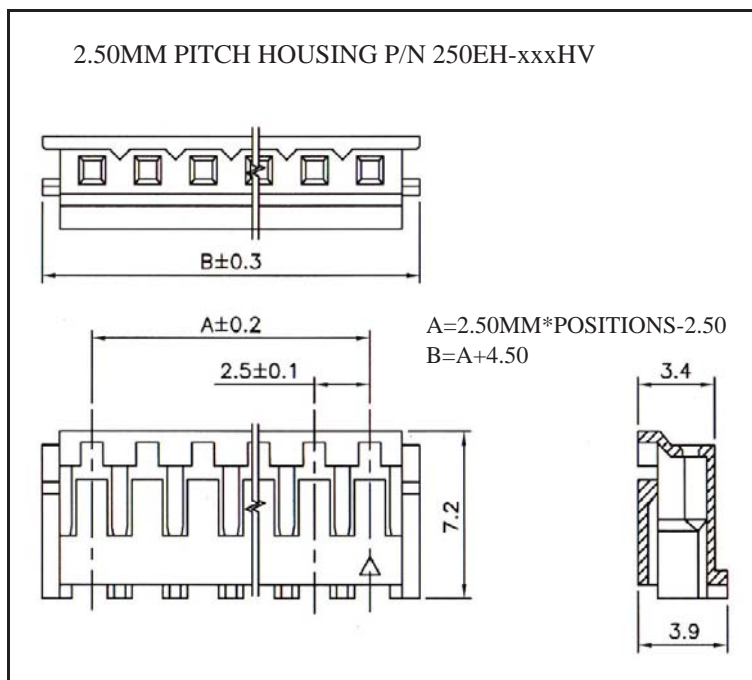
02, 03, 04, 05, 06, 07, 08, 09, 10, 11, 12

3. LENGTH IN CM (CENTIMETERS)

WIRE HARNESS CABLE WITH 2*2.50MM PITCH WIRE-TO-BOARD CRIMPED HOUSINGS



K250EH



ORDERING INFORMATION:

P/N **K** 1 2 3 C M

1. HOUSING TYPE AT 2 ENDS:

"250EH" 2.50MM PITCH EHR TYPE HOUSING TO HOUSING (WIRING 1:1)

"250EN" DITTO, BUT SAME DIRECTION OF CONTACTS AT 2 ENDS (WIRING 1:N)

"250ET" DITTO, BUT HOUSING TO 3MM TINNED END

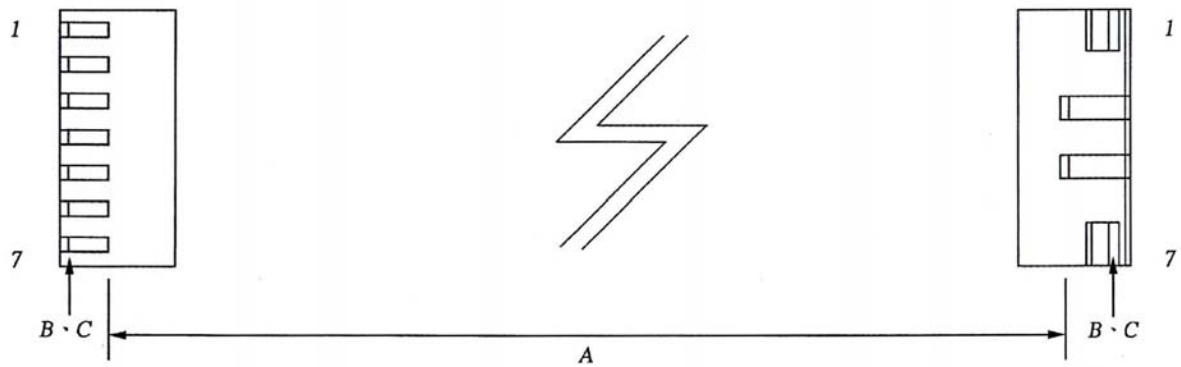
2. NO. OF CONTACTS:

02, 03, 04, 05, 06, 07, 08, 09, 10, 11,

12, 13, 14, 15

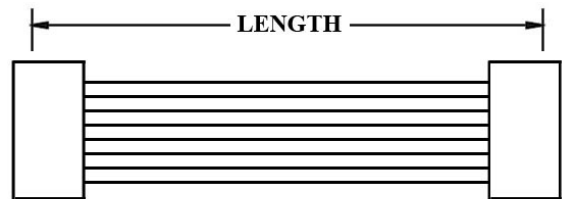
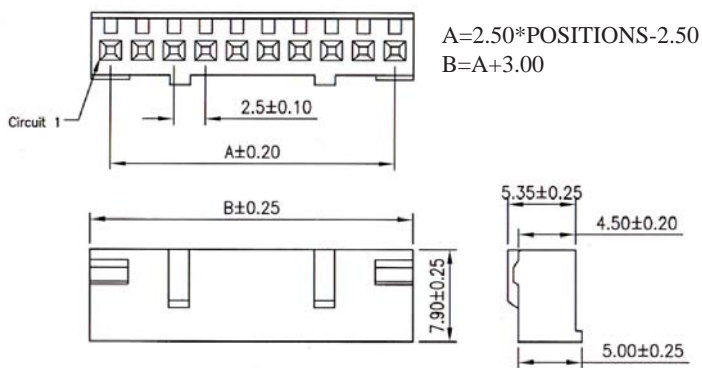
3. LENGTH IN CM (CENTIMETERS)

WIRE HARNESS CABLE WITH 2*2.50MM PITCH WIRE-TO-BOARD CRIMPED HOUSINGS

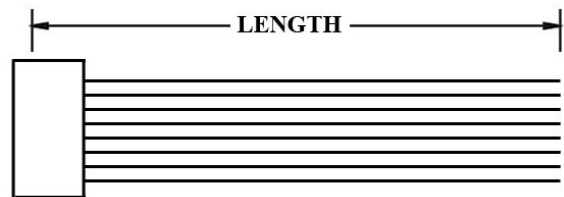


K250JA

2.50MM PITCH HOUSING P/N 250JA-xxxHC



K250JN



K250JT

ORDERING INFORMATION:

P/N K 1 2 3 XXXXXX - XX C M

1. HOUSING TYPE AT 2 ENDS:

"250JA" 2.50MM PITCH ILG TYPE HOUSING TO HOUSING (WIRING 1:1)

"250JN" DITTO, BUT SAME DIRECTION OF CONTACTS AT 2 ENDS (WIRING 1:N)

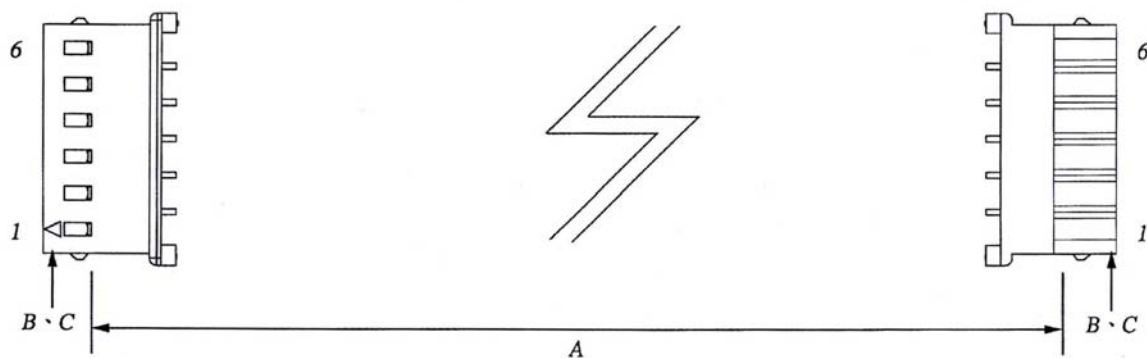
"250JT" DITTO, BUT HOUSING TO 3MM TINNED END

2. NO. OF CONTACTS:

02, 03, 04, 05, 06, 07, 08, 09, 10, 11, 12, 13, 14, 15

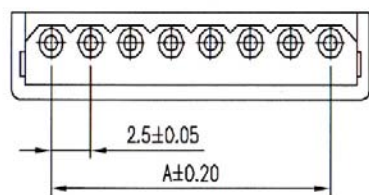
3. LENGTH IN CM (CENTIMETERS)

WIRE HARNESS CABLE WITH 2*2.50MM PITCH WIRE-TO-BOARD CRIMPED HOUSINGS

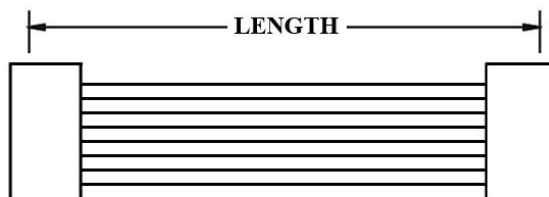
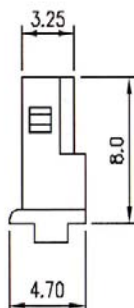
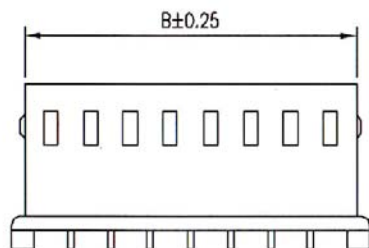


K250MH

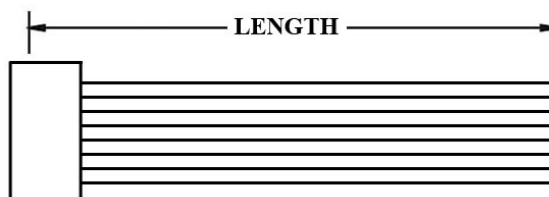
2.50MM PITCH HOUSING P/N 250MH-xxxHV



$A=2.50 \times \text{POSITIONS} - 2.50$
 $B=A+3.30$



K250MN



K250MT

ORDERING INFORMATION:

P/N K xxxxxx xx - xx C M

1. HOUSING TYPE AT 2 ENDS:

"250MH" 2.50MM PITCH MX TYPE HOUSING TO HOUSING (WIRING 1:1)

"250MN" DITTO, BUT SAME DIRECTION OF CONTACTS AT 2 ENDS (WIRING 1:N)

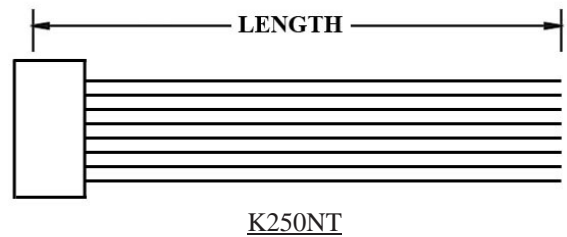
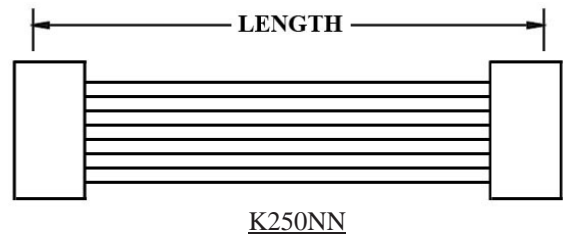
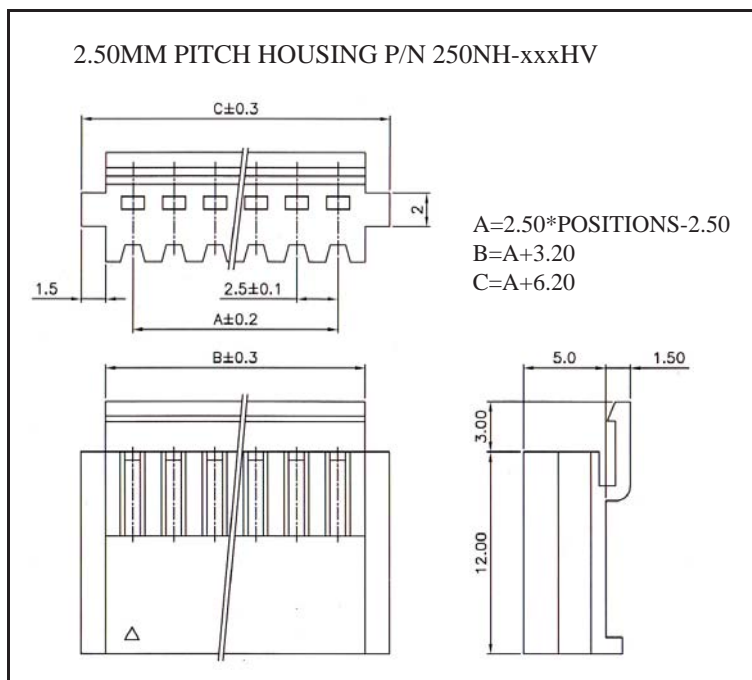
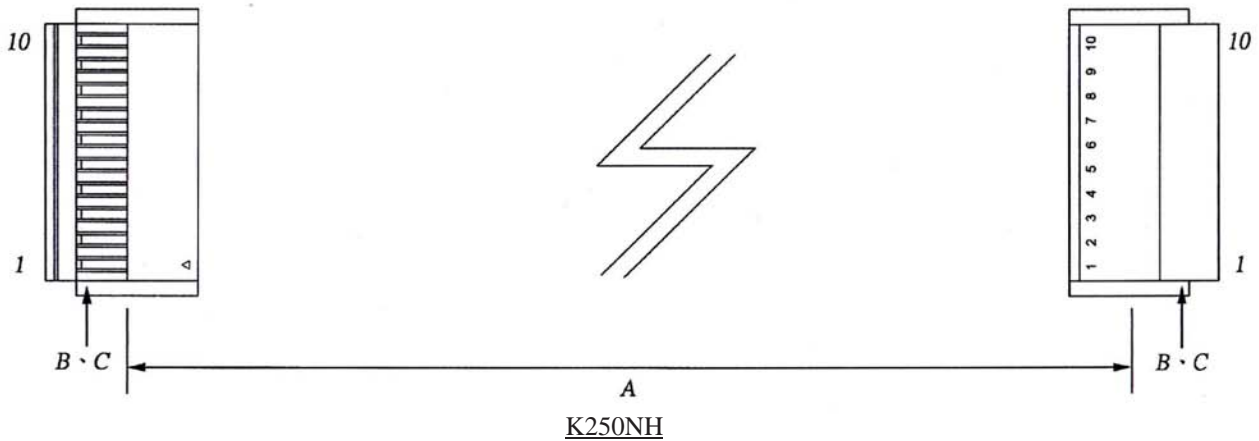
"250MT" DITTO, BUT HOUSING TO 3MM TINNED END

2. NO. OF CONTACTS:

02, 03, 04, 05, 06, 07, 08, 09, 10, 11, 12, 13, 14, 15, 16

3. LENGTH IN CM (CENTIMETERS)

WIRE HARNESS CABLE WITH 2*2.50MM PITCH WIRE-TO-BOARD CRIMPED HOUSINGS

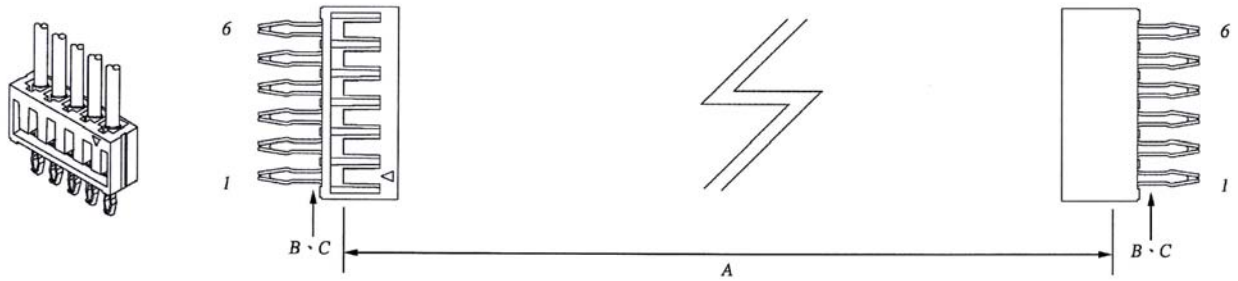


ORDERING INFORMATION:

P/N **K** 1 2 3 C M

1. HOUSING TYPE AT 2 ENDS:
 "250NH" 2.50MM PITCH NH TYPE HOUSING TO HOUSING (WIRING 1:1)
 "250NN" DITTO, BUT SAME DIRECTION OF CONTACTS AT 2 ENDS (WIRING 1:N)
 "250NT" DITTO, BUT HOUSING TO 3MM TINNED END
2. NO. OF CONTACTS:
 02, 03, 04, 05, 06, 07, 08, 09, 10, 11,
 12, 13, 14, 15, 16, 17, 18, 19, 20
3. LENGTH IN CM (CENTIMETERS)

WIRE HARNESS CABLE WITH 2*2.50MM PITCH BOARD-IN CRIMPED HOUSINGS

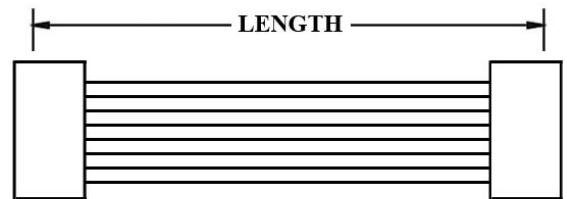
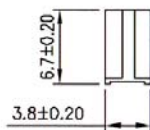
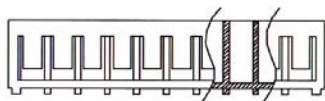
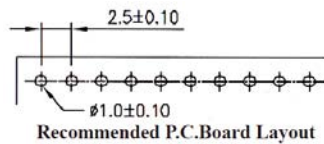
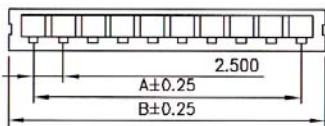


K250SD

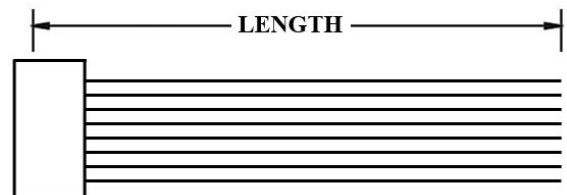
2.50MM PITCH HOUSING P/N 250SD-xxxHV

$$A = 2.50 * \text{POSITIONS} - 2.50$$

$$B = A + 4.10$$



K250S1



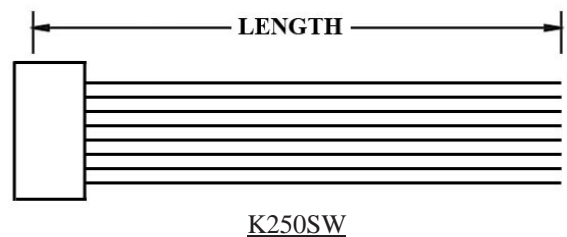
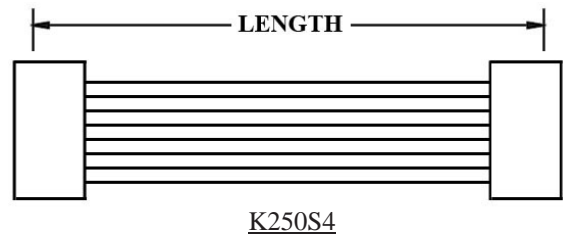
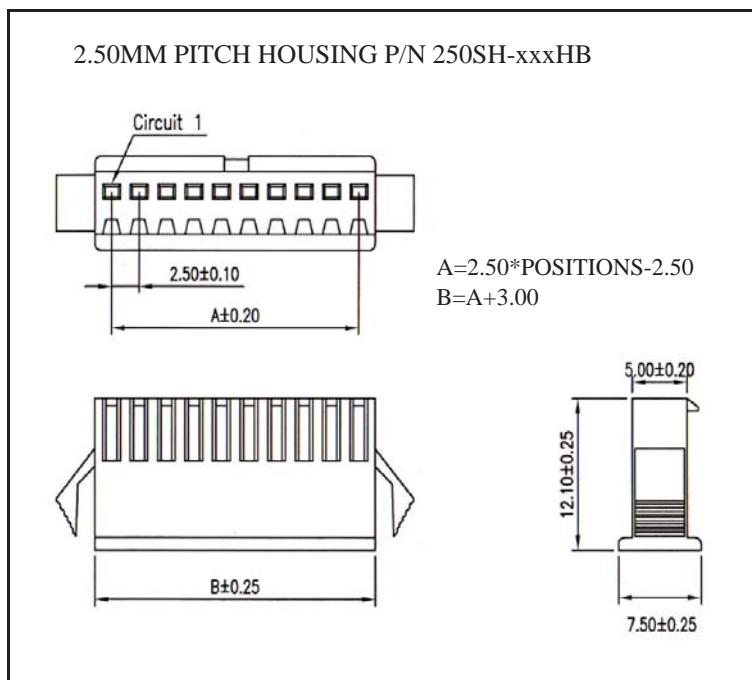
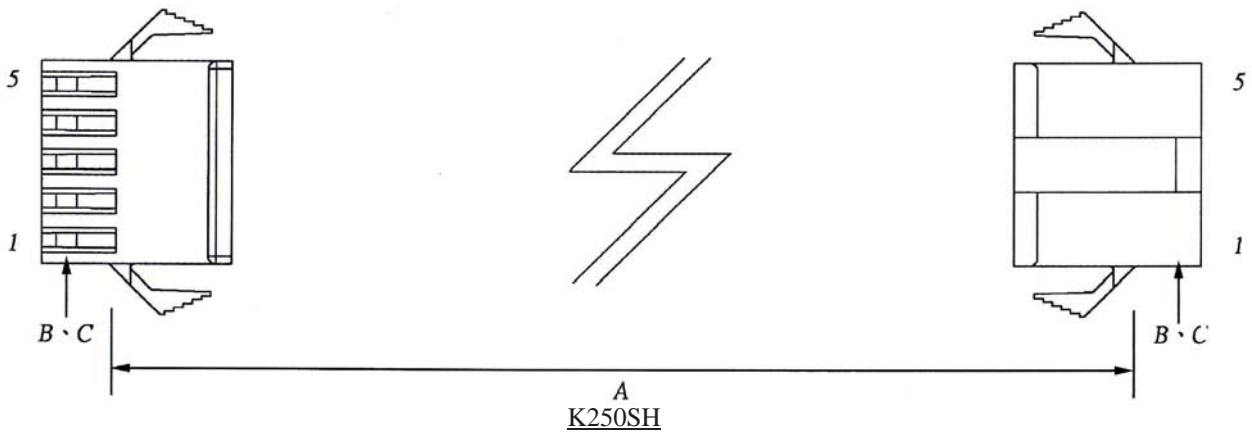
K250ST

ORDERING INFORMATION:

P/N K xxxxxx xx - xx C M

1. HOUSING TYPE AT 2 ENDS:
 "250SD" 2.50MM PITCH SCN TYPE HOUSING TO HOUSING (WIRING 1:1)
 "250S1" DITTO, BUT SAME DIRECTION OF CONTACTS AT 2 ENDS (WIRING 1:N)
 "250ST" DITTO, BUT HOUSING TO 3MM TINNED END
2. NO. OF CONTACTS:
 02, 03, 04, 05, 06, 07, 08, 09, 10, 11, 12, 13, 14, 15, 16
3. LENGTH IN CM (CENTIMETERS)

WIRE HARNESS CABLE WITH 2*1.25MM PITCH WIRE-TO-WIRE CRIMPED HOUSINGS



ORDERING INFORMATION:

P/N K 1 2 3 CM

1. HOUSING TYPE AT 2 ENDS:

"250SH" 2.50MM PITCH SM TYPE HOUSING TO HOUSING (WIRING 1:1)

"250S4" DITTO, BUT SAME DIRECTION OF CONTACTS AT 2 ENDS (WIRING 1:N)

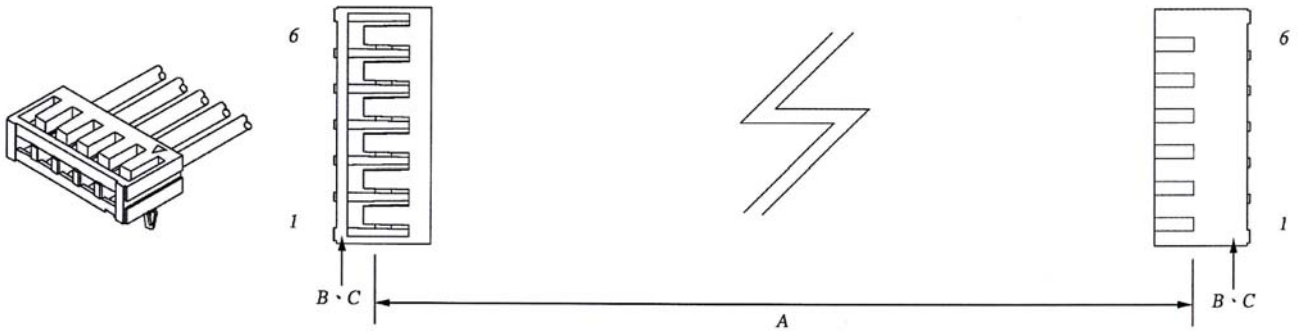
"250SW" DITTO, BUT HOUSING TO 3MM TINNED END

2. NO. OF CONTACTS:

02, 03, 04, 05, 06, 07, 08, 09, 10, 11, 12

3. LENGTH IN CM (CENTIMETERS)

WIRE HARNESS CABLE WITH 2*2.50MM PITCH R/A BOARD-IN CRIMPED HOUSINGS

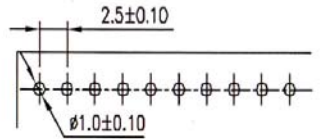
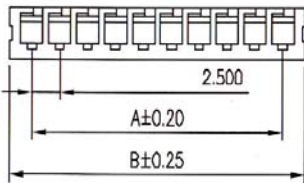


K250SJ

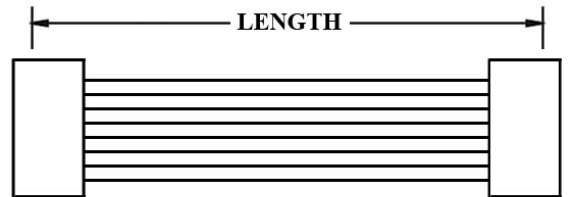
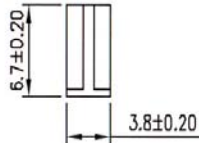
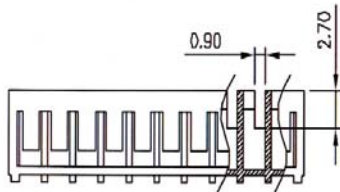
2.50MM PITCH HOUSING P/N 250SJ-xxxHV

$$A = 2.50 * \text{POSITIONS} - 2.50$$

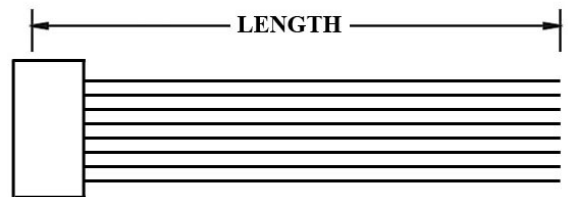
$$B = A + 4.00$$



Recommended P.C. Board Layout



K250S5



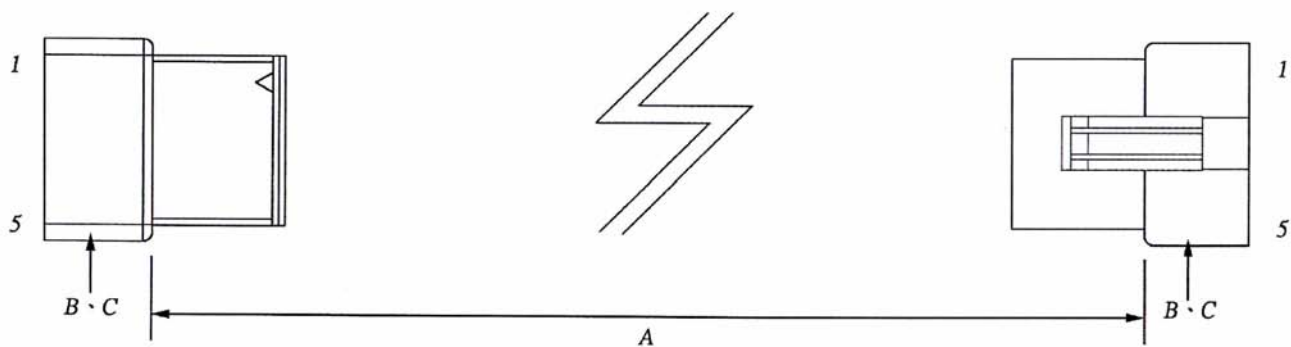
K250SX

ORDERING INFORMATION:

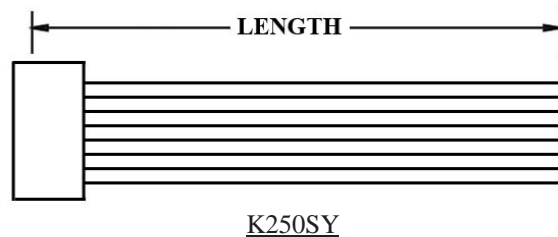
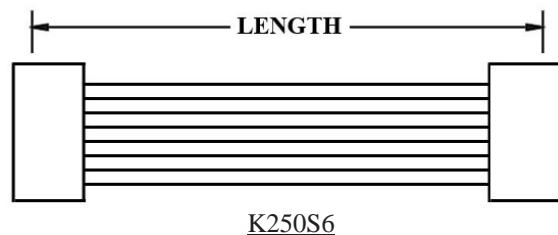
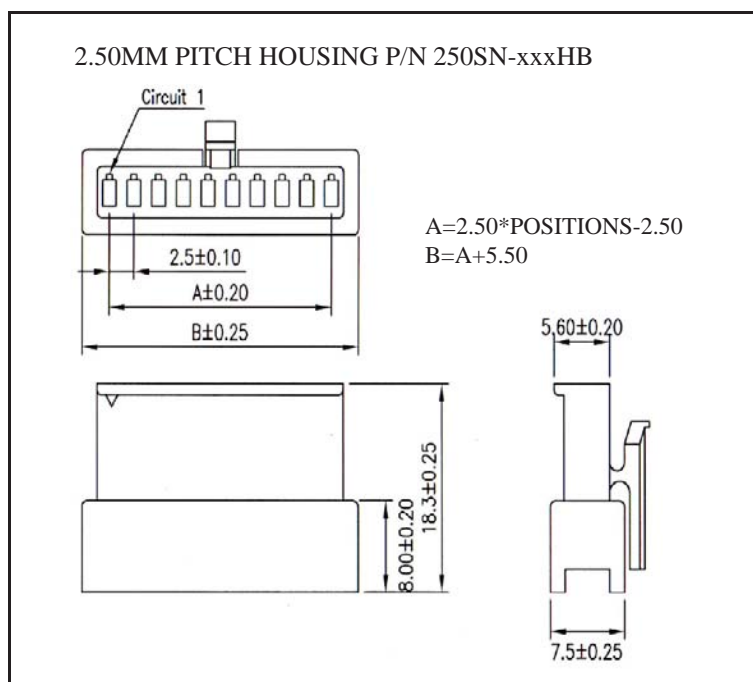
P/N K 1 2 3 xxxxxx - xx C M

- HOUSING TYPE AT 2 ENDS:
 "250SJ" 2.50MM PITCH SCN90° TYPE HOUSING TO HOUSING (WIRING 1:1)
 "250S5" DITTO, BUT SAME DIRECTION OF CONTACTS AT 2 ENDS (WIRING 1:N)
 "250SX" DITTO, BUT HOUSING TO 3MM TINNED END
- NO. OF CONTACTS:
 02, 03, 04, 05, 06, 07, 08, 09, 10, 11, 12, 13, 14, 15, 16
- LENGTH IN CM (CENTIMETERS)

WIRE HARNESS CABLE WITH 2*2.50MM PITCH WIRE-TO-WIRE CRIMPED HOUSINGS



K250SN

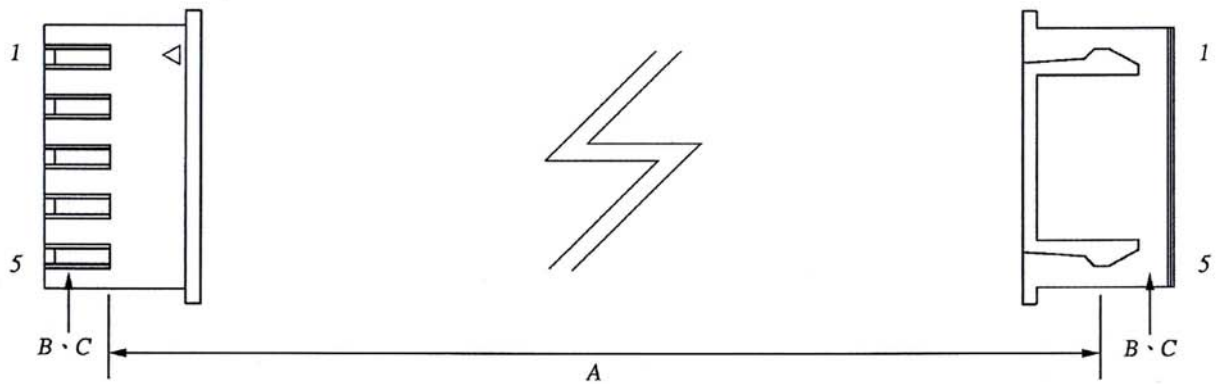


ORDERING INFORMATION:

P/N K 1 2 3 xxxxxx xx CM

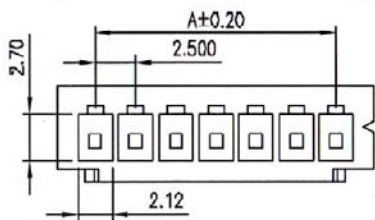
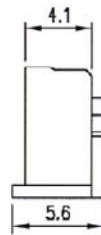
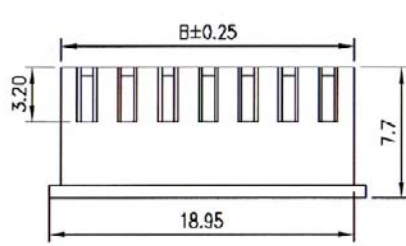
1. HOUSING TYPE AT 2 ENDS:
 "250SN" 2.50MM PITCH SM TYPE HOUSING TO HOUSING (WIRING 1:1)
 "250S6" DITTO, BUT SAME DIRECTION OF CONTACTS AT 2 ENDS (WIRING 1:N)
 "250SY" DITTO, BUT HOUSING TO 3MM TINNED END
2. NO. OF CONTACTS:
 02, 03, 04, 05, 06, 07, 08, 09, 10, 11, 12
3. LENGTH IN CM (CENTIMETERS)

WIRE HARNESS CABLE WITH 2*2.50MM PITCH WIRE-TO-BOARD CRIMPED HOUSINGS

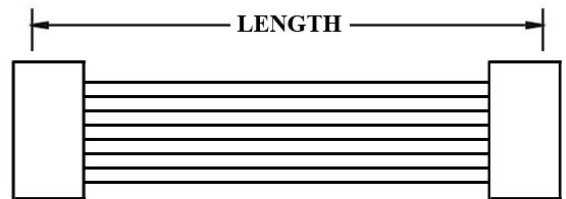


K250XH

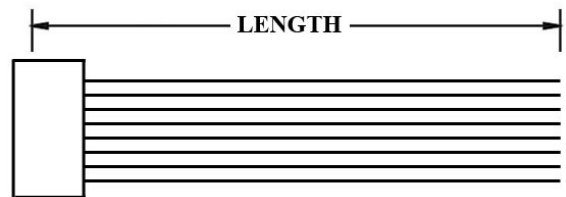
2.50MM PITCH HOUSING P/N 250XH-xxxHV



A=2.50*POSITIONS-2.50
B=A+3.20



K250XN



K250XT

ORDERING INFORMATION:

P/N K 1 2 3 XXXXXX - XX C M

1. HOUSING TYPE AT 2 ENDS:

"250XH" 2.50MM PITCH XH TYPE HOUSING TO HOUSING (WIRING 1:1)

"250XN" DITTO, BUT SAME DIRECTION OF CONTACTS AT 2 ENDS (WIRING 1:N)

"250XT" DITTO, BUT HOUSING TO 3MM TINNED END

2. NO. OF CONTACTS:

02, 03, 04, 05, 06, 07, 08, 09, 10, 11,

12, 13, 14, 15, 16, 17, 18, 19, 20

3. LENGTH IN CM (CENTIMETERS)