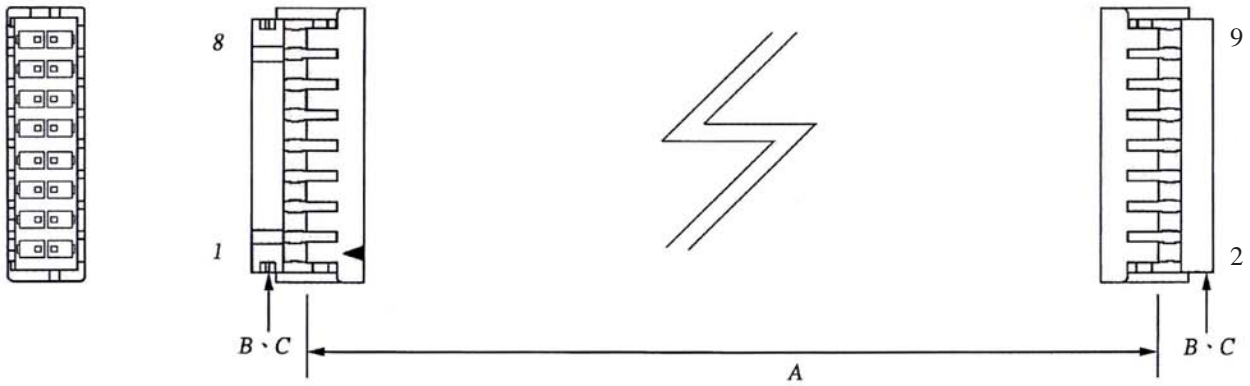
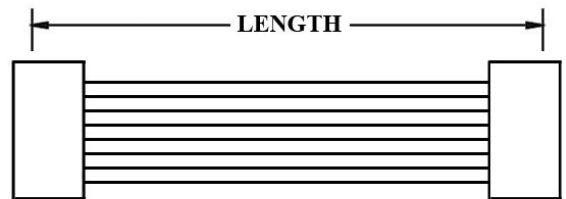
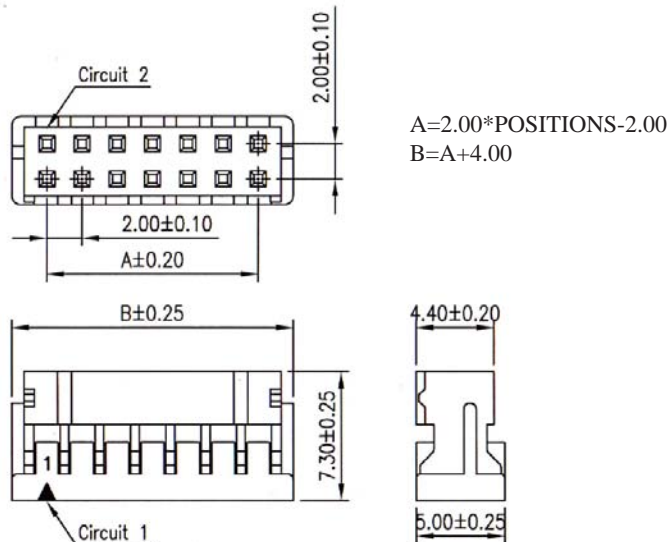


WIRE HARNESS CABLE WITH 2*2.00MM PITCH WIRE-TO-BOARD CRIMPED HOUSINGS

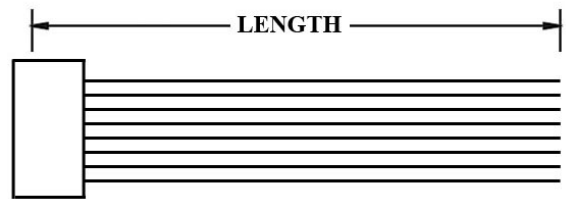


K200DF

2.00MM PITCH HOUSING P/N 200DF-xxxHW



K200DN



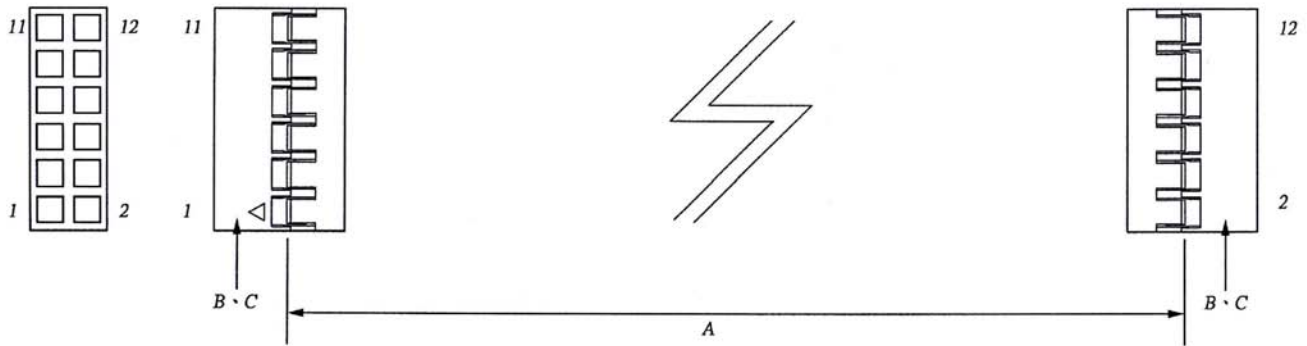
K200DT

ORDERING INFORMATION:

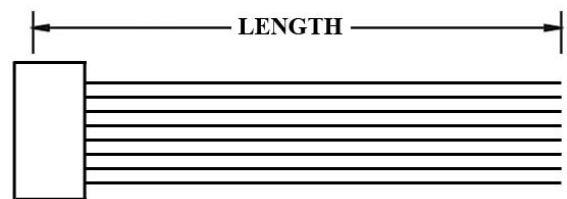
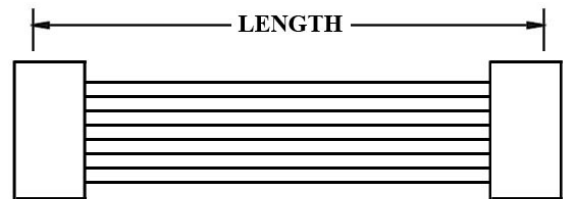
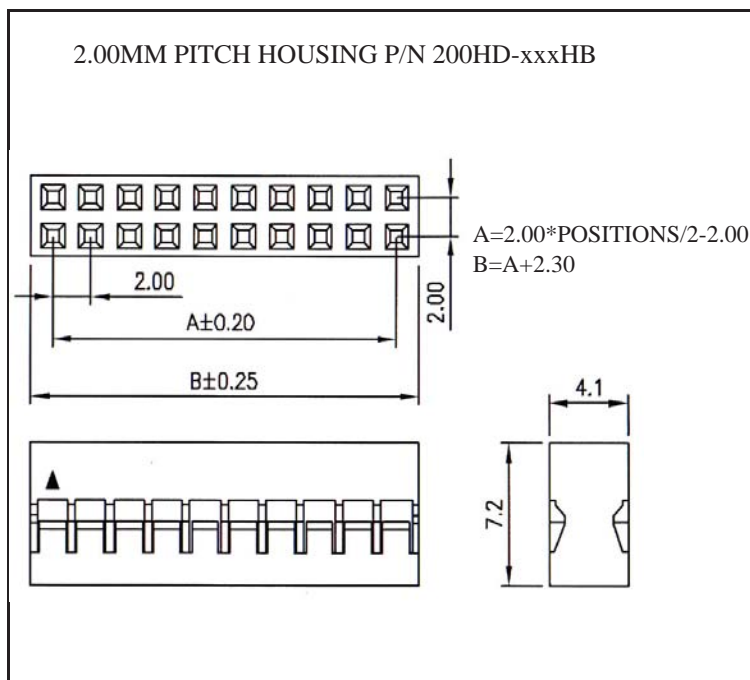
P/N K 1 2 3 C M

- HOUSING TYPE AT 2 ENDS:
 "200DF" 2.00MM PITCH DF11 TYPE HOUSING TO HOUSING (WIRING 1:1)
 "200DN" DITTO, BUT SAME DIRECTION OF CONTACTS AT 2 ENDS (WIRING 1:N)
 "200DT" DITTO, BUT HOUSING TO 3MM TINNED END
- NO. OF CONTACTS:
 04~40
- LENGTH IN CM (CENTIMETERS)

WIRE HARNESS CABLE WITH 2*2.00MM PITCH WIRE-TO-BOARD CRIMPED HOUSINGS



K200HD



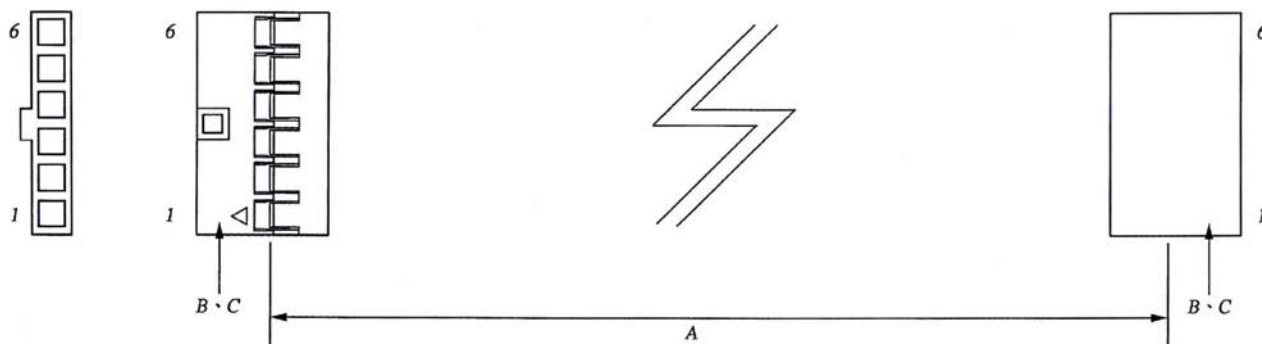
ORDERING INFORMATION:

P/N K xxxxxx xx - xx C M

1 2 3

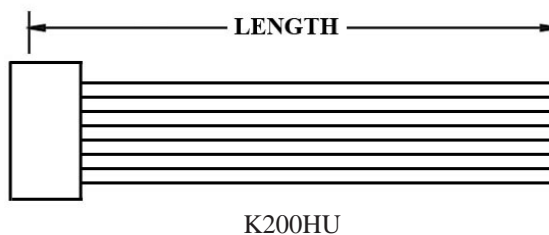
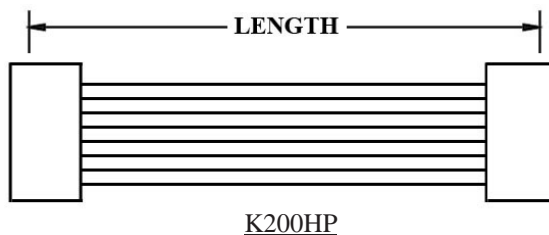
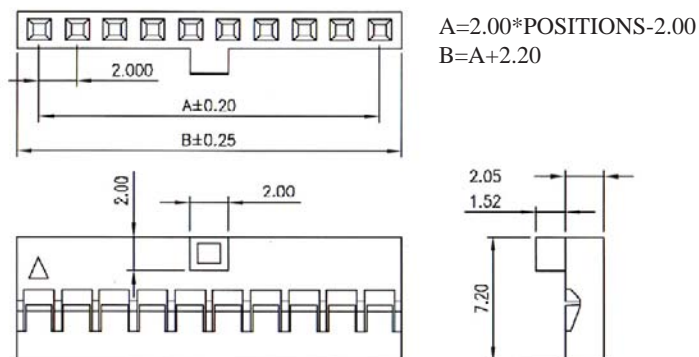
1. HOUSING TYPE AT 2 ENDS:
 "200HD" 2.00MM PITCH DPT TYPE HOUSING TO HOUSING (WIRING 1:1)
 "200HN" DITTO, BUT SAME DIRECTION OF CONTACTS AT 2 ENDS (WIRING 1:N)
 "200HT" DITTO, BUT HOUSING TO 3MM TINNED END
2. NO. OF CONTACTS:
 04~80
3. LENGTH IN CM (CENTIMETERS)

WIRE HARNESS CABLE WITH 2*2.00MM PITCH WIRE-TO-BOARD CRIMPED HOUSINGS



K200HE

2.00MM PITCH HOUSING P/N 200HE-xxxHB



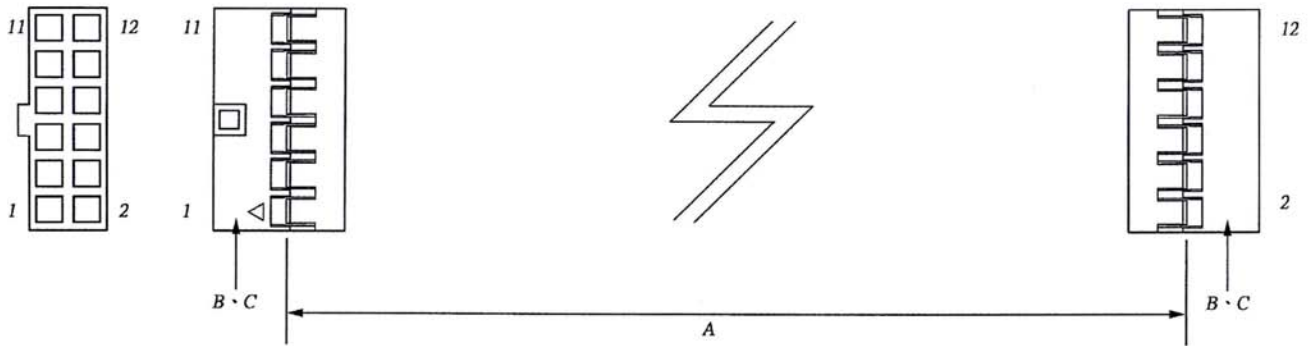
ORDERING INFORMATION:

P/N K xxxxxx xx - xx C M

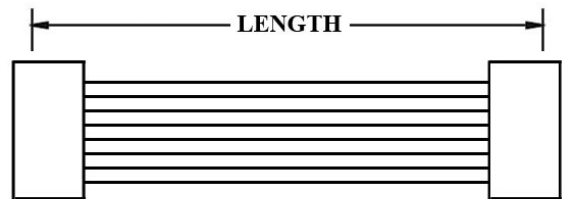
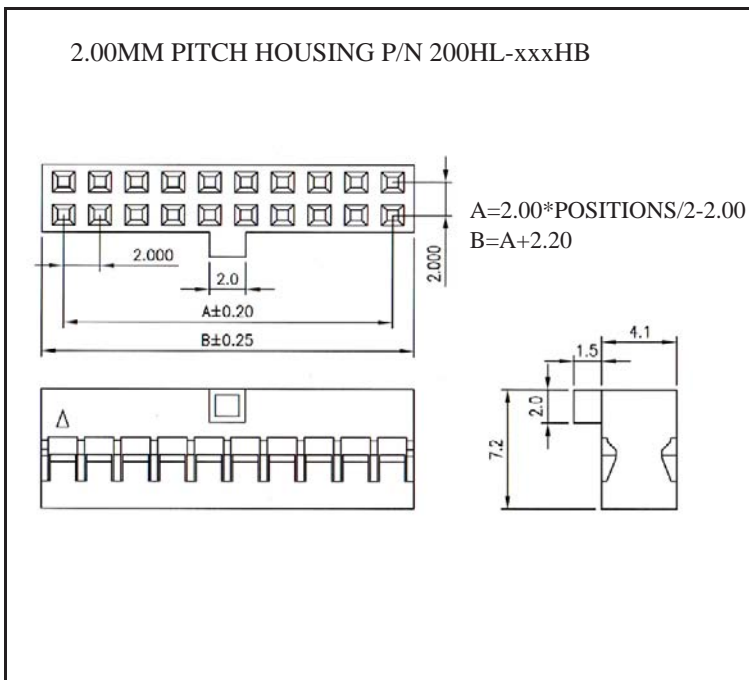
1 2 3

1. HOUSING TYPE AT 2 ENDS:
 "200HE" 2.00MM PITCH DPT TYPE HOUSING TO HOUSING (WIRING 1:1)
 "200HP" DITTO, BUT SAME DIRECTION OF CONTACTS AT 2 ENDS (WIRING 1:N)
 "200HU" DITTO, BUT HOUSING TO 3MM TINNED END
2. NO. OF CONTACTS:
 02~40
3. LENGTH IN CM (CENTIMETERS)

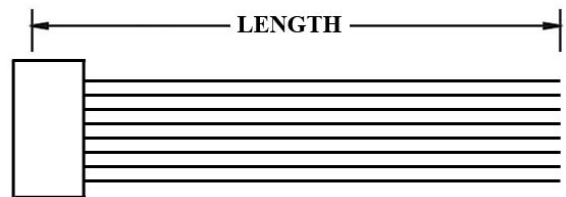
WIRE HARNESS CABLE WITH 2*2.00MM PITCH WIRE-TO-BOARD CRIMPED HOUSINGS



K200HL



K200HQ



K200HV

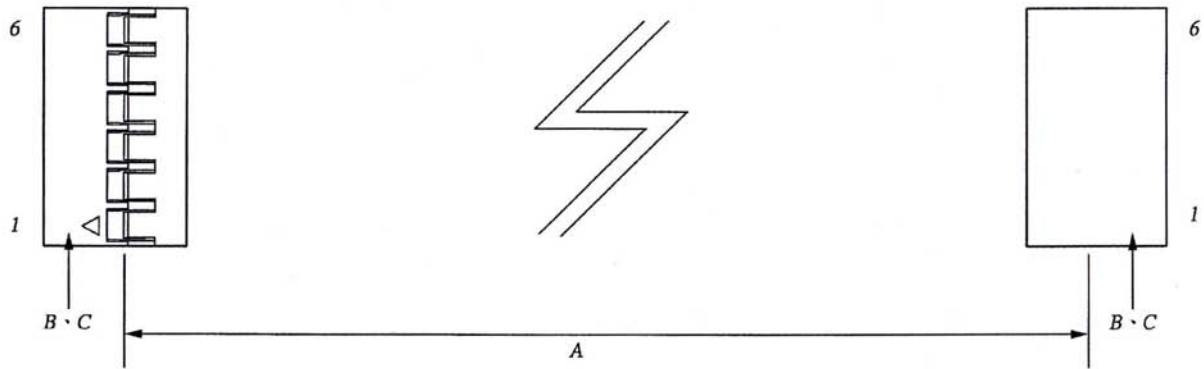
ORDERING INFORMATION:

P/N K xxxxxx xx - xx C M

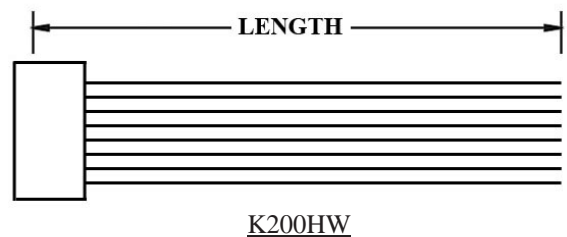
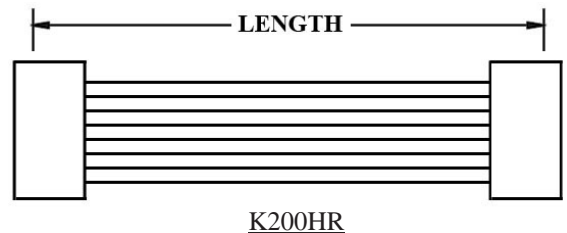
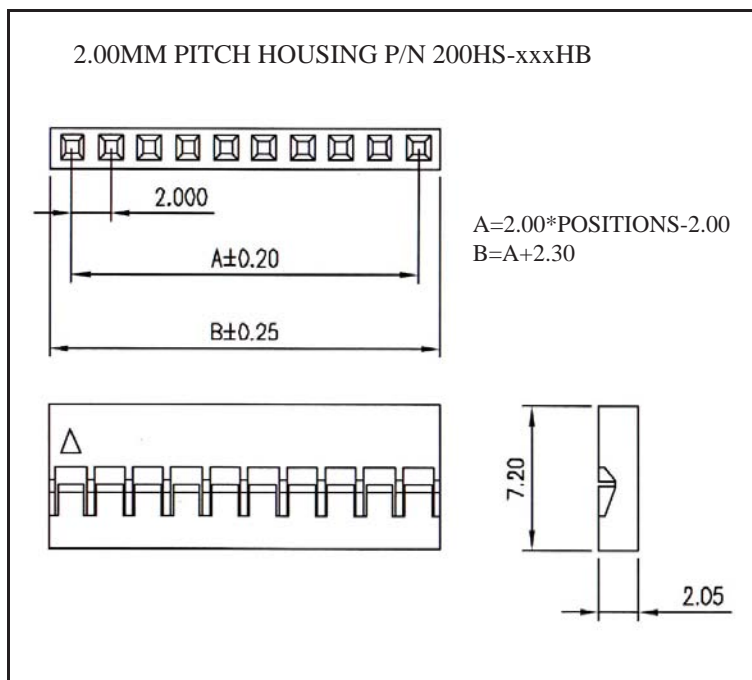
1 2 3

1. HOUSING TYPE AT 2 ENDS:
 "200HL" 2.00MM PITCH DPT TYPE HOUSING TO HOUSING (WIRING 1:1)
 "200HQ" DITTO, BUT SAME DIRECTION OF CONTACTS AT 2 ENDS (WIRING 1:1)
 "200HV" DITTO, BUT HOUSING TO 3MM TINNED END
2. NO. OF CONTACTS:
 04~50
3. LENGTH IN CM (CENTIMETERS)

WIRE HARNESS CABLE WITH 2*2.00MM PITCH WIRE-TO-BOARD CRIMPED HOUSINGS



K200HS



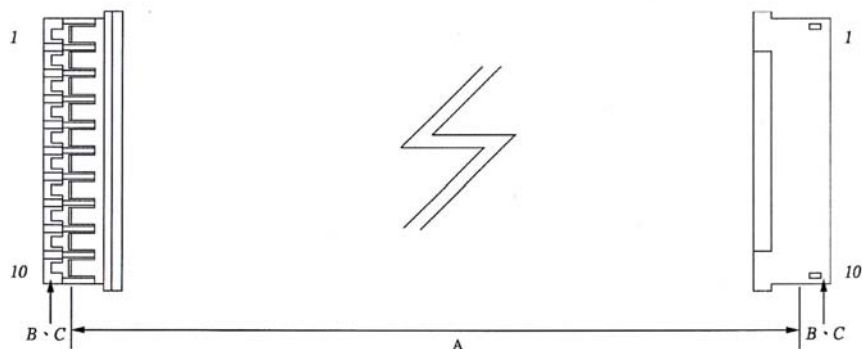
ORDERING INFORMATION:

P/N K xxxxxx xx - xx C M

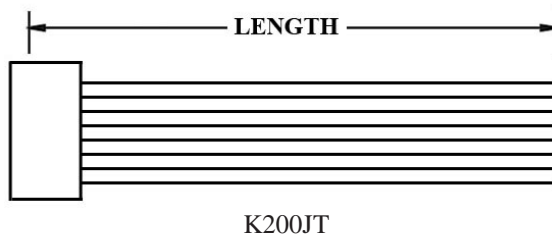
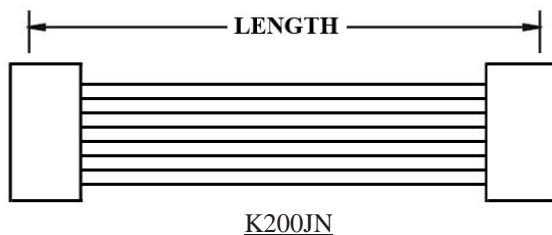
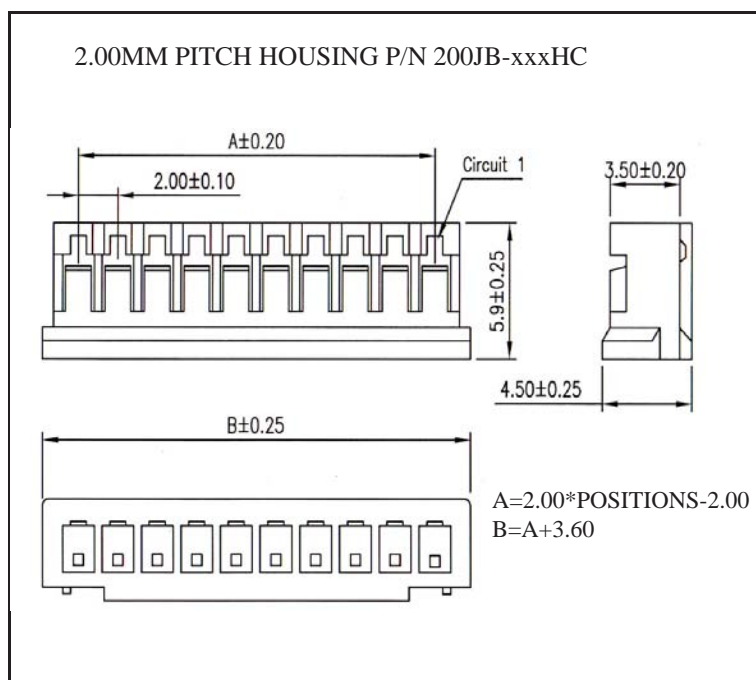
1 2 3

1. HOUSING TYPE AT 2 ENDS:
 "200HS" 2.00MM PITCH DPT TYPE HOUSING TO HOUSING (WIRING 1:1)
 "200HR" DITTO, BUT SAME DIRECTION OF CONTACTS AT 2 ENDS (WIRING 1:N)
 "200HW" DITTO, BUT HOUSING TO 3MM TINNED END
2. NO. OF CONTACTS:
 02~40
3. LENGTH IN CM (CENTIMETERS)

WIRE HARNESS CABLE WITH 2*2.00MM PITCH WIRE-TO-BOARD CRIMPED HOUSINGS



K200JB



ORDERING INFORMATION:

P/N K 1 2 3 CM

1. HOUSING TYPE AT 2 ENDS:

"200JB" 2.00MM PITCH ILS TYPE HOUSING TO HOUSING (WIRING 1:1)

"200JN" DITTO, BUT SAME DIRECTION OF CONTACTS AT 2 ENDS (WIRING 1:N)

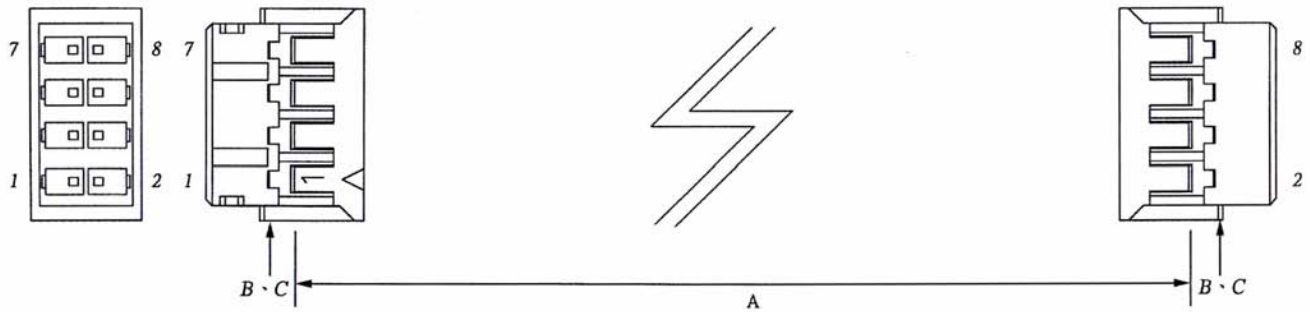
"200JT" DITTO, BUT HOUSING TO 3MM TINNED END

2. NO. OF CONTACTS:

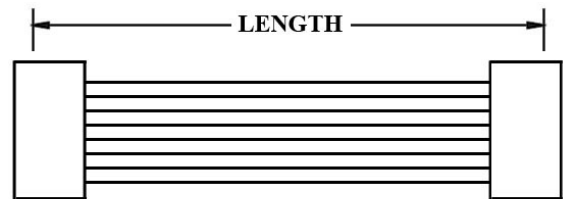
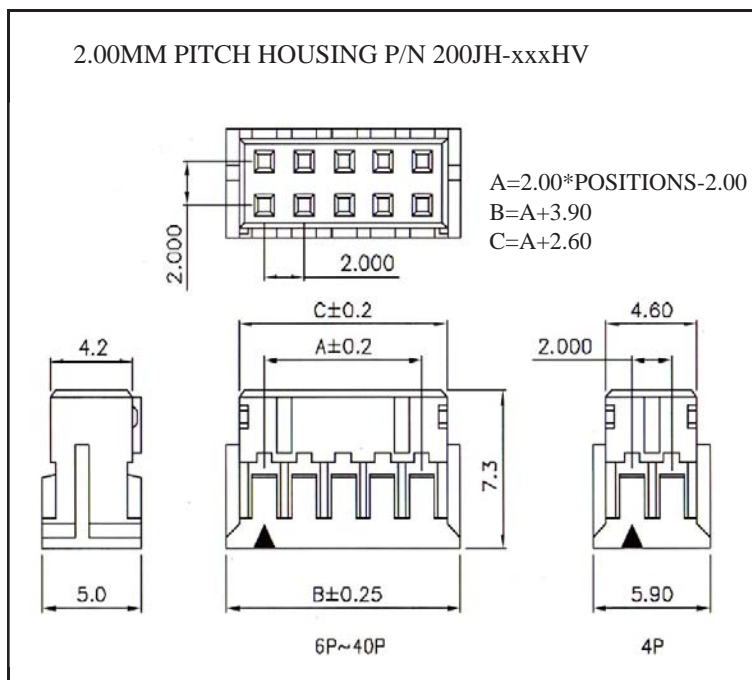
02, 03, 04, 05, 06, 07, 08, 09, 10, 11, 12, 13, 14, 15

3. LENGTH IN CM (CENTIMETERS)

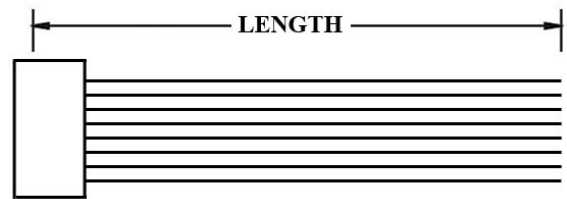
WIRE HARNESS CABLE WITH 2*2.00MM PITCH WIRE-TO-BOARD CRIMPED HOUSINGS



K200JH



K200JP



K200JU

ORDERING INFORMATION:

P/N K 1 2 3 CM

1. HOUSING TYPE AT 2 ENDS:

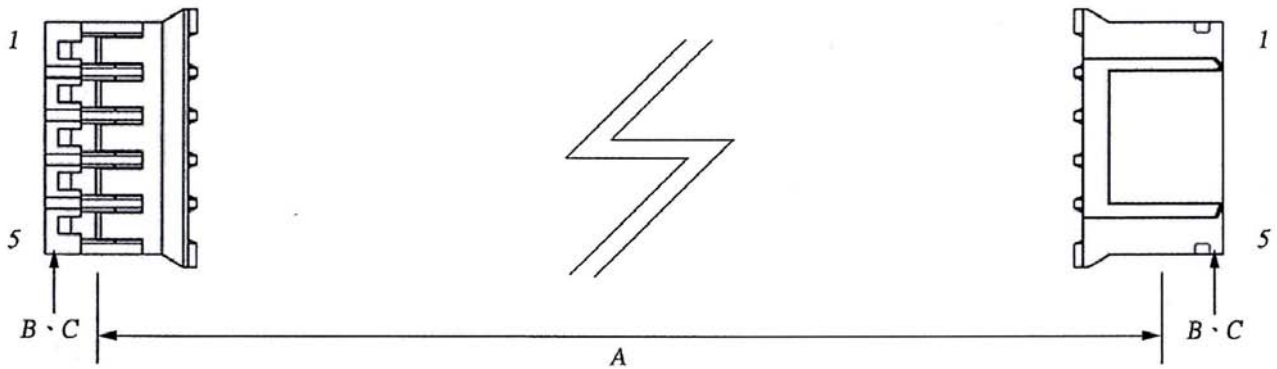
- "200JH" 2.00MM PITCH PHDR TYPE HOUSING TO HOUSING (WIRING 1:1)
- "200JP" DITTO, BUT SAME DIRECTION OF CONTACTS AT 2 ENDS (WIRING 1:N)
- "200JU" DITTO, BUT HOUSING TO 3MM TINNED END

2. NO. OF CONTACTS:

04~40

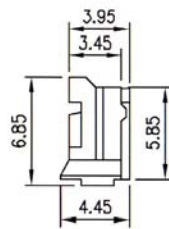
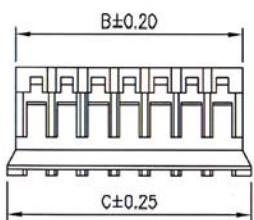
3. LENGTH IN CM (CENTIMETERS)

WIRE HARNESS CABLE WITH 2*2.00MM PITCH WIRE-TO-BOARD CRIMPED HOUSINGS

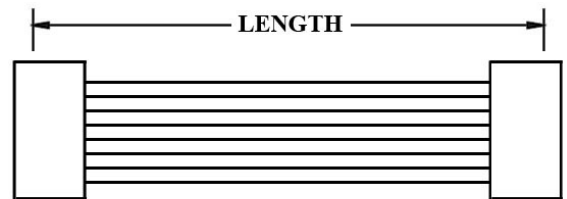
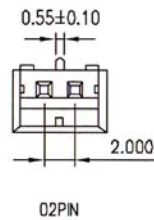
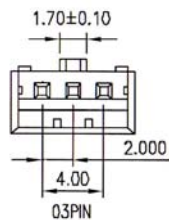
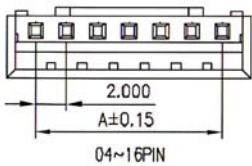


K200JQ

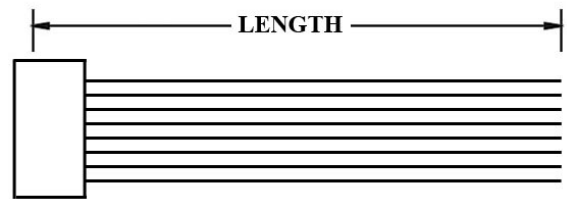
2.00MM PITCH HOUSING P/N 200JQ-xxxHV



A=2.00*POSITIONS-2.00
B=A+2.65
C=A+3.80



K200JR



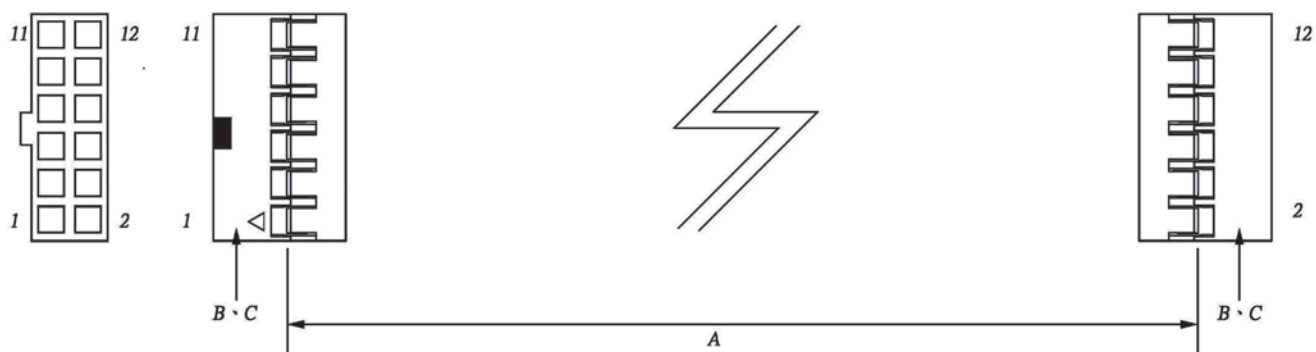
K200JV

ORDERING INFORMATION:

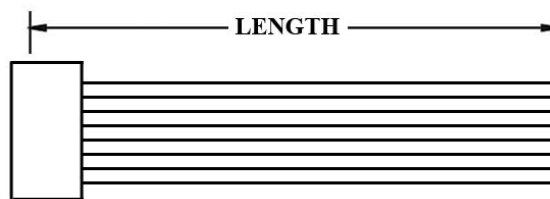
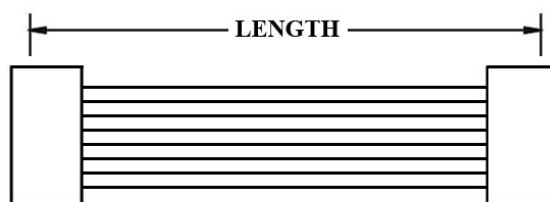
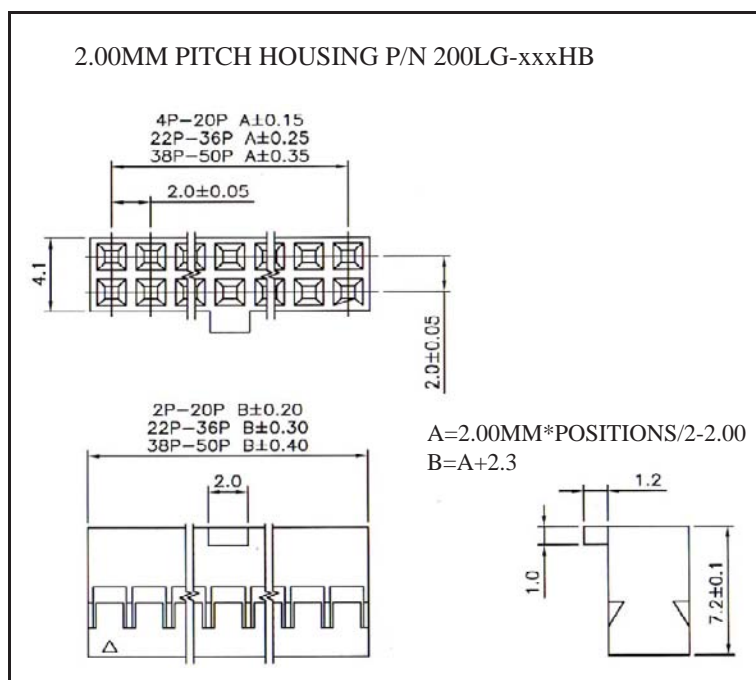
P/N K 1 2 3 - xx C M

- HOUSING TYPE AT 2 ENDS:
"200JQ" 2.00MM PITCH PHR TYPE HOUSING TO HOUSING (WIRING 1:1)
"200JR" DITTO, BUT SAME DIRECTION OF CONTACTS AT 2 ENDS (WIRING 1:N)
"200JV" DITTO, BUT HOUSING TO 3MM TINNED END
- NO. OF CONTACTS:
02, 03, 04, 05, 06, 07, 08, 09, 10, 11,
12, 13, 14, 15, 16, 17, 18, 19, 20
- LENGTH IN CM (CENTIMETERS)

WIRE HARNESS CABLE WITH 2*2.00MM PITCH WIRE-TO-BOARD CRIMPED HOUSINGS



K200LG



ORDERING INFORMATION:

P/N K xxxxxx xx - xx C M

1 2 3

1. HOUSING TYPE AT 2 ENDS:

"200LG" 2.00MM PITCH DPT TYPE HOUSING TO HOUSING (WIRING 1:1)

"200LN" DITTO, BUT SAME DIRECTION OF CONTACTS AT 2 ENDS (WIRING 1:N)

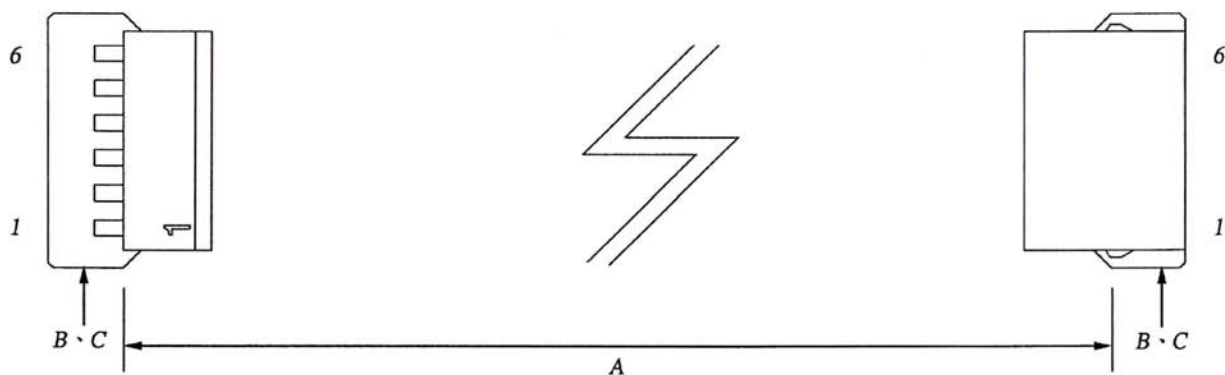
"200LT" DITTO, BUT HOUSING TO 3MM TINNED END

2. NO. OF CONTACTS:

04~80

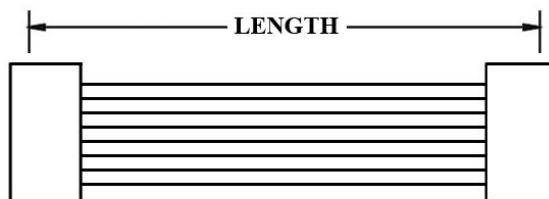
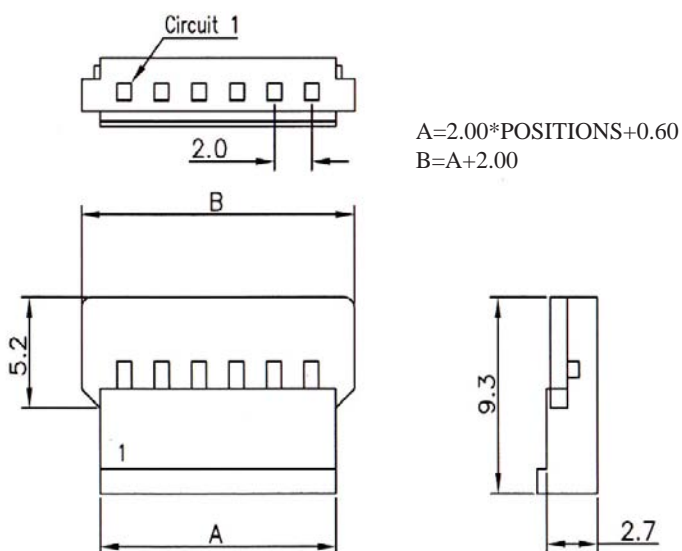
3. LENGTH IN CM (CENTIMETERS)

WIRE HARNESS CABLE WITH 2*2.00MM PITCH WIRE-TO-WIRE CRIMPED HOUSINGS

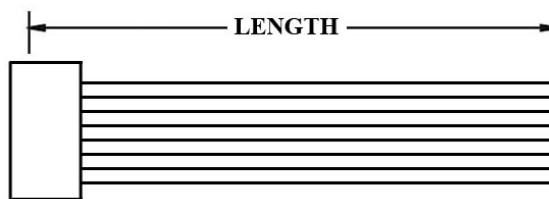


K200MF

2.00MM PITCH HOUSING P/N 200MF-xxxHW



K200MN



K200MT

ORDERING INFORMATION:

P/N **K** 1 2 3 **C M**

1. HOUSING TYPE AT 2 ENDS:

"200MF" 2.00MM PITCH MX TYPE HOUSING TO HOUSING (WIRING 1:1)

"200MN" DITTO, BUT SAME DIRECTION OF CONTACTS AT 2 ENDS (WIRING 1:N)

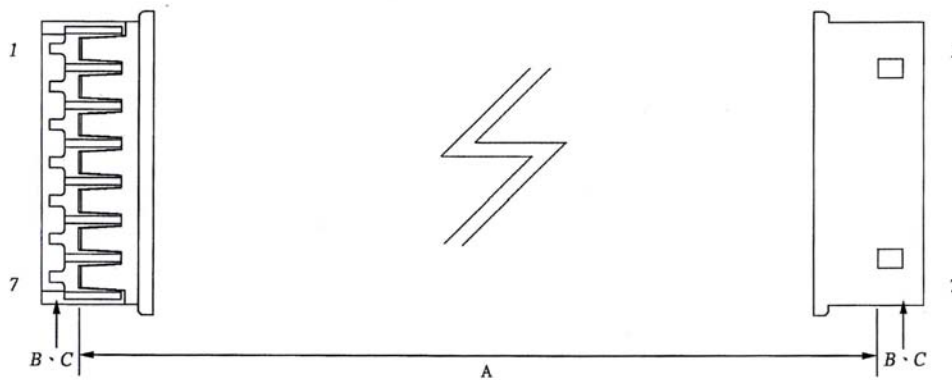
"200MT" DITTO, BUT HOUSING TO 3MM TINNED END

2. NO. OF CONTACTS:

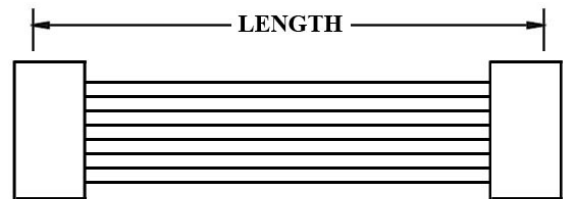
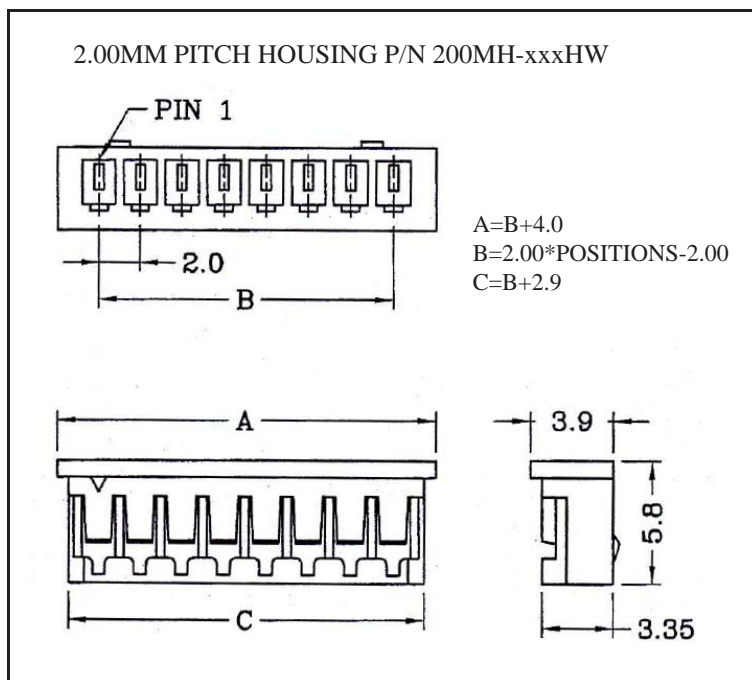
02, 03, 04, 05, 06, 07, 08, 09, 10

3. LENGTH IN CM (CENTIMETERS)

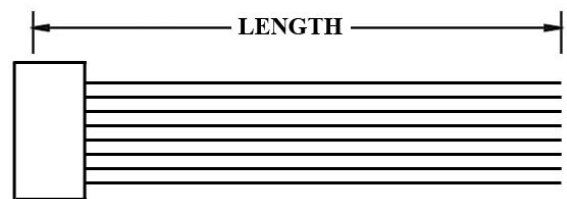
WIRE HARNESS CABLE WITH 2.00MM PITCH WIRE-TO-BOARD CRIMPED HOUSINGS



K200MH



K200MP



K200MU

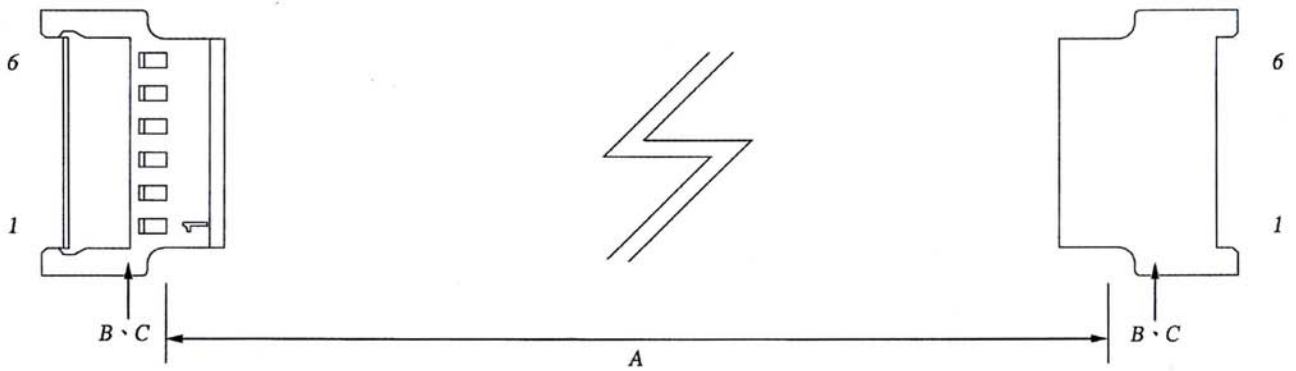
ORDERING INFORMATION:

P/N K xxxxxx xx C M

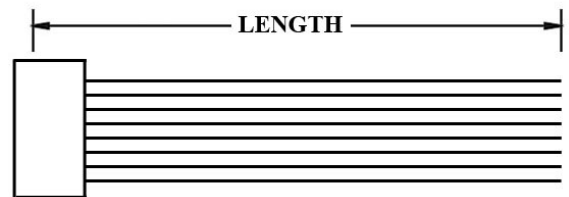
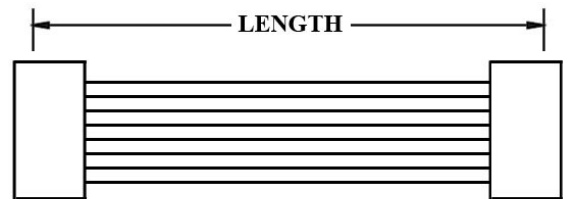
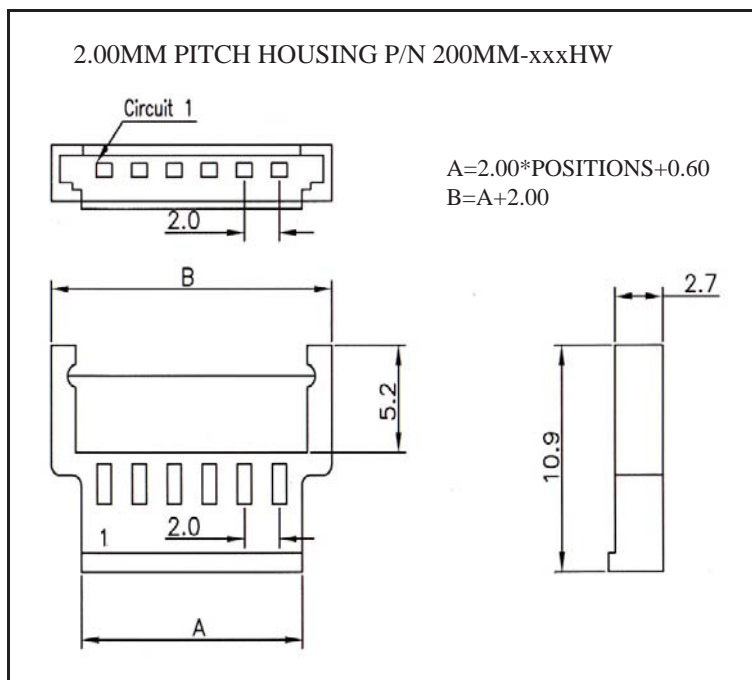
1 2 3

1. HOUSING TYPE AT 2 ENDS:
 "200MH" 2.00MM PITCH MX TYPE HOUSING TO HOUSING (WIRING 1:1)
 "200MP" DITTO, BUT SAME DIRECTION OF CONTACTS AT 2 ENDS (WIRING 1:N)
 "200MU" DITTO, BUT HOUSING TO 3MM TINNED END
2. NO. OF CONTACTS:
 02, 03, 04, 05, 06, 07, 08, 09, 10, 11,
 12, 13, 14, 15, 16, 17, 18, 19, 20
3. LENGTH IN CM (CENTIMETERS)

WIRE HARNESS CABLE WITH 2*2.00MM PITCH WIRE-TO-WIRE CRIMPED HOUSINGS



K200MM

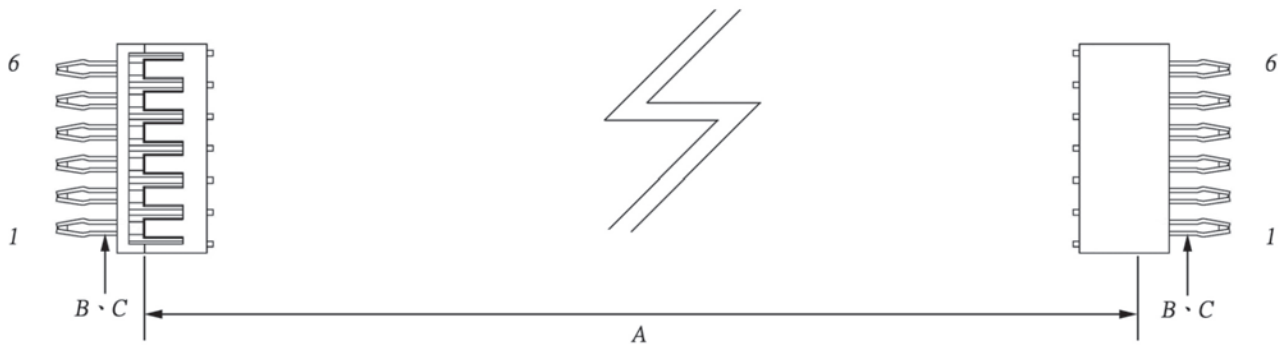


ORDERING INFORMATION:

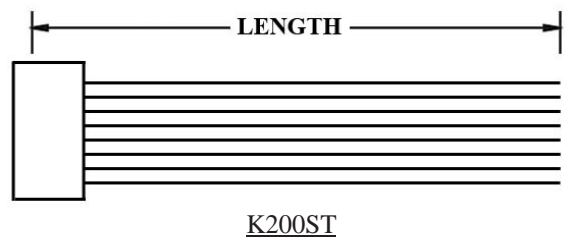
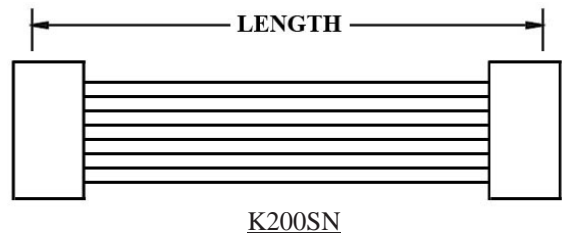
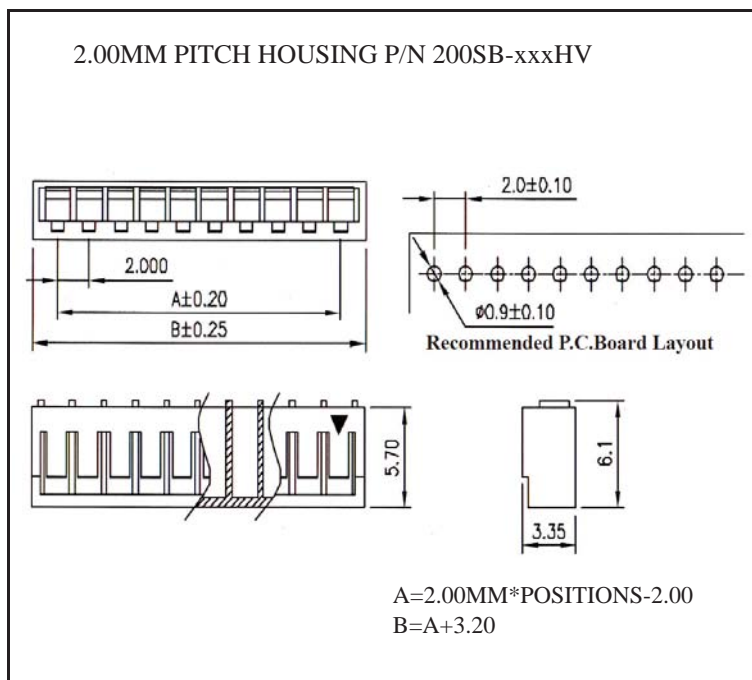
P/N K 1 2 3 xxxxxx - xx C M

1. HOUSING TYPE AT 2 ENDS:
 "200MM" 2.00MM PITCH MX TYPE HOUSING TO HOUSING (WIRING 1:1)
 "200MQ" DITTO, BUT SAME DIRECTION OF CONTACTS AT 2 ENDS (WIRING 1:N)
 "200MV" DITTO, BUT HOUSING TO 3MM TINNED END
2. NO. OF CONTACTS:
 02, 03, 04, 05, 06, 07, 08, 09, 10
3. LENGTH IN CM (CENTIMETERS)

WIRE HARNESS CABLE WITH 2*2.00MM PITCH BOARD-IN CRIMPED HOUSINGS



K200SB

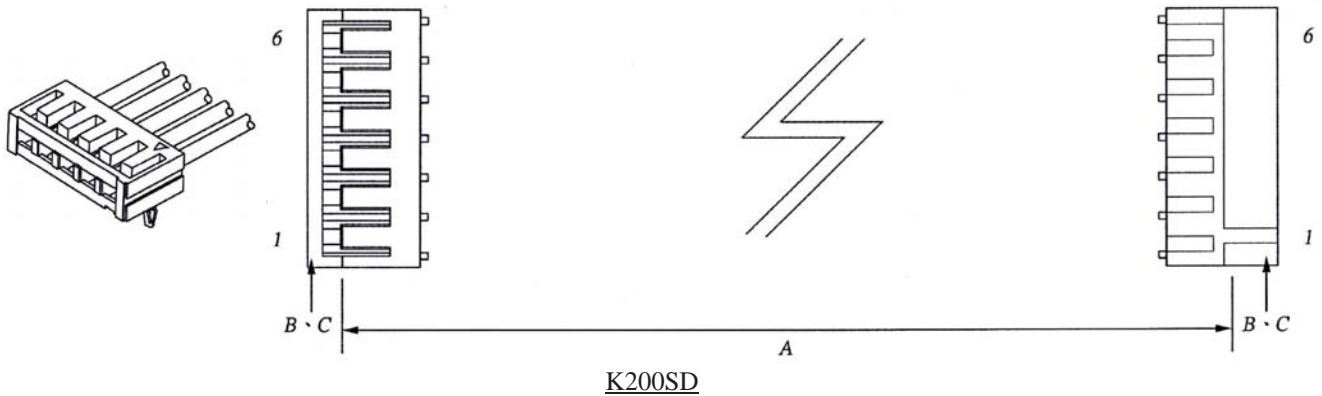


ORDERING INFORMATION:

P/N K 1 2 3 XXXXXX - XX C M

1. HOUSING TYPE AT 2 ENDS:
 "200SB" 2.00MM PITCH BOARD-IN TYPE HOUSING TO HOUSING (WIRING 1:1)
 "200SN" DITTO, BUT SAME DIRECTION OF CONTACTS AT 2 ENDS (WIRING 1:N)
 "200ST" DITTO, BUT HOUSING TO 3MM TINNED END
2. NO. OF CONTACTS:
 02, 03, 04, 05, 06, 07, 08, 09, 10, 11, 12, 13, 14, 15, 16
3. LENGTH IN CM (CENTIMETERS)

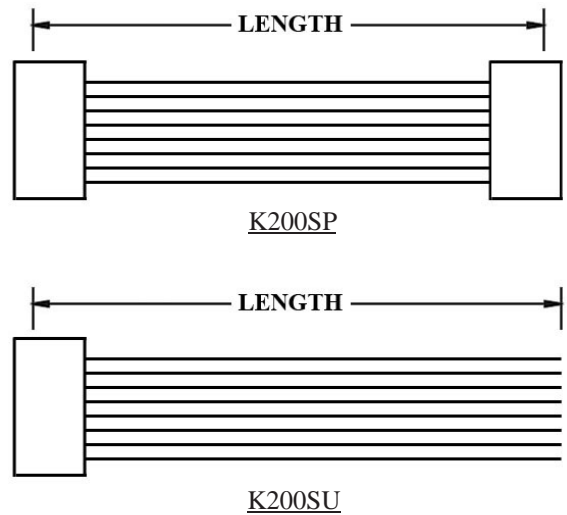
WIRE HARNESS CABLE WITH 2*2.00MM PITCH R/A BOARD-IN CRIMPED HOUSINGS



2.00MM PITCH HOUSING P/N 200SD-xxxHV

Recommended P.C. Board Layout

A=2.00MM*POSITIONS-2.00
B=A+3.20

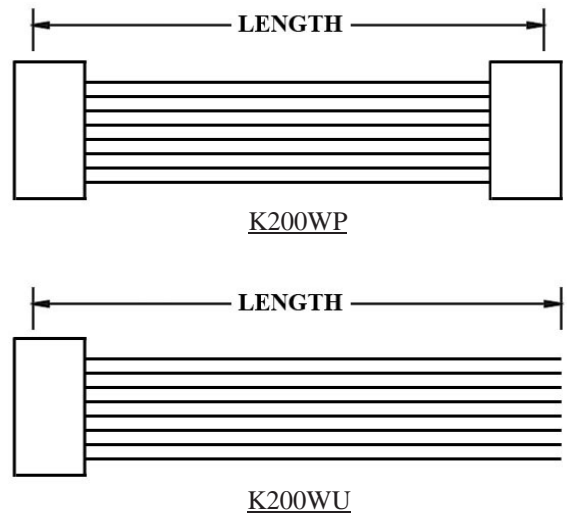
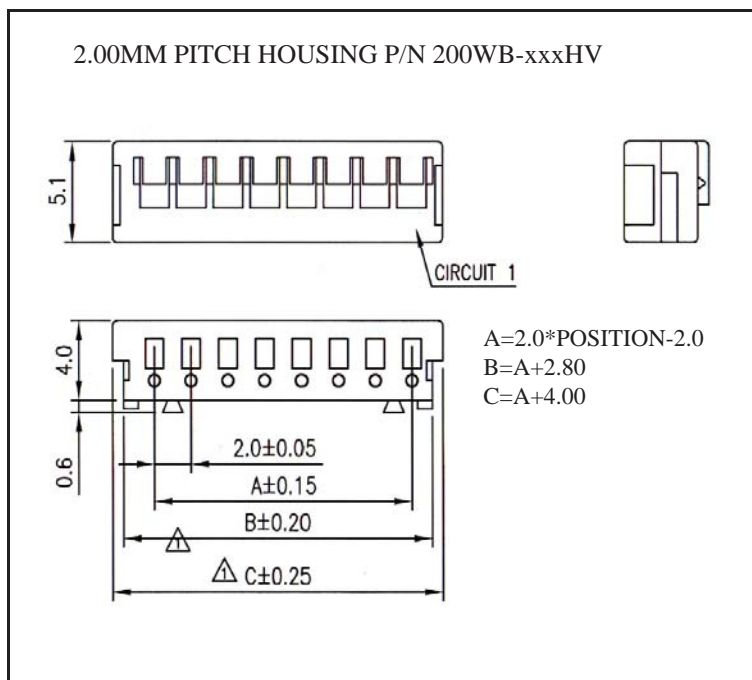
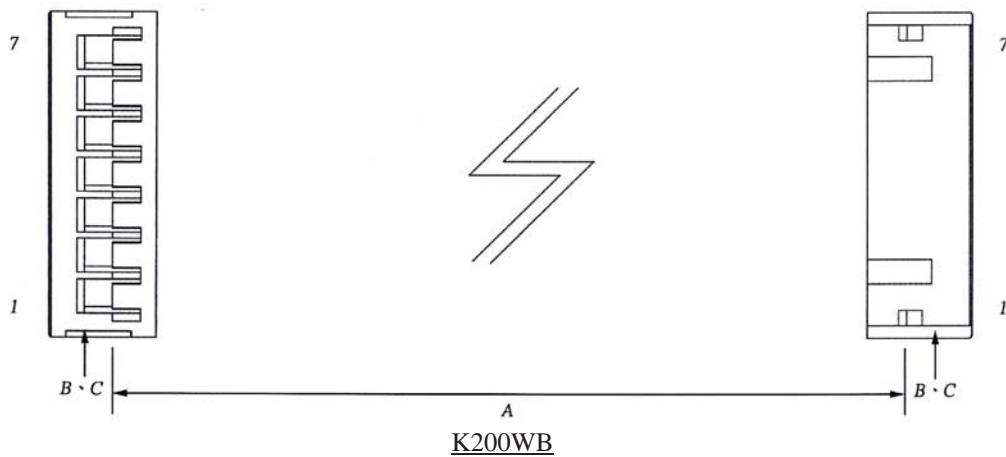


ORDERING INFORMATION:

P/N **K** 1 2 3 C M

1. HOUSING TYPE AT 2 ENDS:
 "200SD" 2.00MM PITCH R/A BOARD-IN TYPE HOUSING TO HOUSING (WIRING 1:1)
 "200SP" DITTO, BUT SAME DIRECTION OF CONTACTS AT 2 ENDS (WIRING 1:N)
 "200SU" DITTO, BUT HOUSING TO 3MM TINNED END
2. NO. OF CONTACTS:
 02, 03, 04, 05, 06, 07, 08, 09, 10, 11, 12, 13, 14, 15, 16
3. LENGTH IN CM (CENTIMETERS)

WIRE HARNESS CABLE WITH 2*2.00MM PITCH WIRE-TO-BOARD CRIMPED HOUSINGS



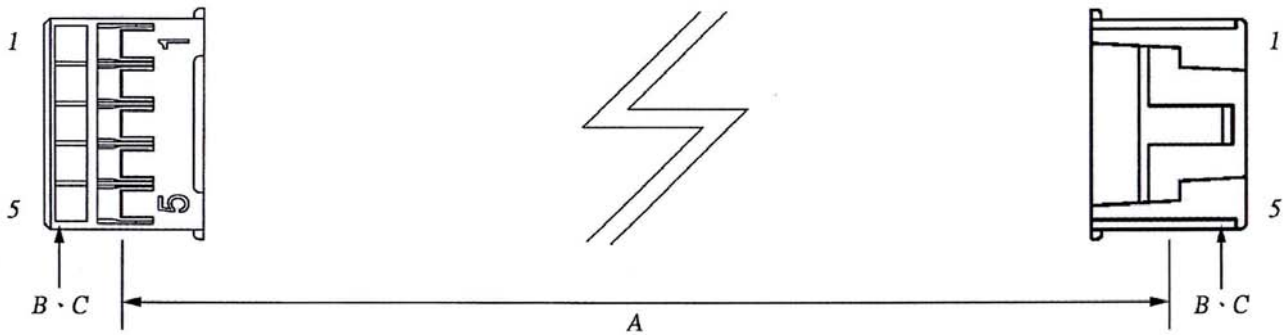
ORDERING INFORMATION:

P/N K xxxxxx xx C M

1 2 3

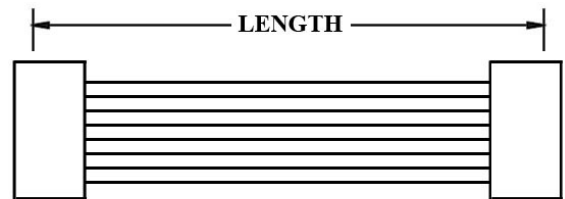
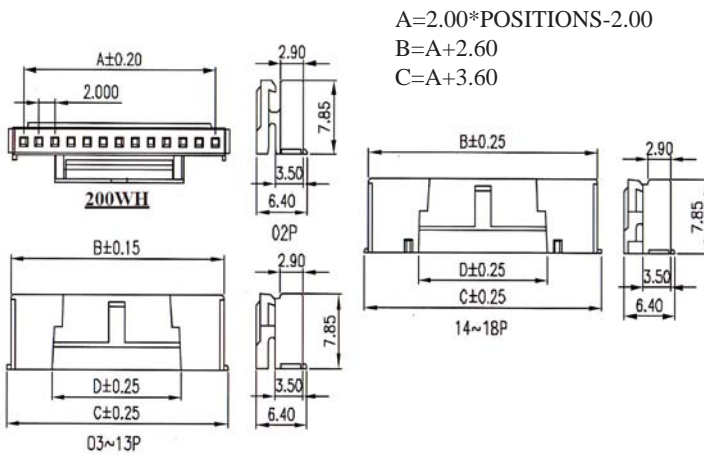
1. HOUSING TYPE AT 2 ENDS:
 "200WB" 2.00MM PITCH AMP TYPE HOUSING TO HOUSING (WIRING 1:1)
 "200WP" DITTO, BUT SAME DIRECTION OF CONTACTS AT 2 ENDS (WIRING 1:1)
 "200WU" DITTO, BUT HOUSING TO 3MM TINNED END
2. NO. OF CONTACTS:
 02, 03, 04, 05, 06, 07, 08, 09, 10, 11, 12, 13, 14, 15
3. LENGTH IN CM (CENTIMETERS)

WIRE HARNESS CABLE WITH 2*2.00MM PITCH WIRE-TO-BOARD CRIMPED HOUSINGS

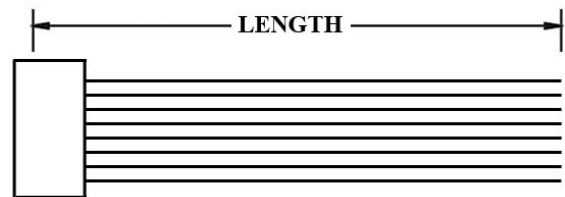


K200WH

2.00MM PITCH HOUSING P/N 200WH-xxxHV



K200WN



K200WT

ORDERING INFORMATION:

P/N K 1 2 3 C M

1. HOUSING TYPE AT 2 ENDS:

- "200WH" 2.00MM PITCH SINGLE ROW HOUSING TO HOUSING (WIRING 1:1)
- "200WN" DITTO, BUT SAME DIRECTION OF CONTACTS AT 2 ENDS (WIRING 1:N)
- "200WT" DITTO, BUT HOUSING TO 3MM TINNED END

2. NO. OF CONTACTS:

- 02, 03, 04, 05, 06, 07, 08, 09, 10, 11,
- 12, 13, 14, 15, 16, 17, 18

3. LENGTH IN CM (CENTIMETERS)