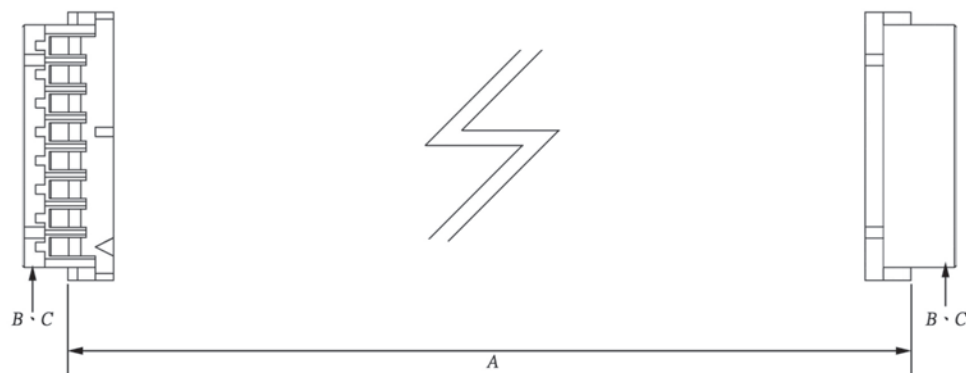
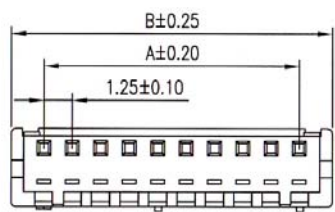


WIRE HARNESS CABLE WITH 2*1.25MM PITCH WIRE-TO-BOARD CRIMPED HOUSINGS (1)



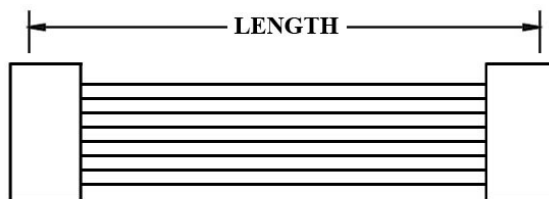
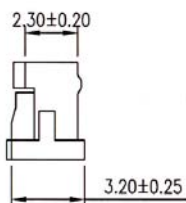
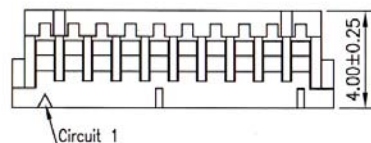
K125HH

1.25MM PITCH HOUSING P/N 125HH-xxxHV

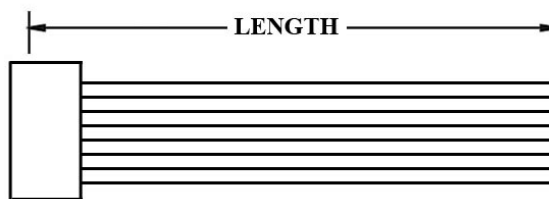


$$A = 1.25 * \text{POSITIONS} - 1.25$$

$$B = A + 2.90$$



K125HN



K125HT

ORDERING INFORMATION:

P/N K xxxxxx xx - xx C M

1 2 3

1. HOUSING TYPE AT 2 ENDS:

"125HH" 1.25MM PITCH DF13 TYPE HOUSING TO HOUSING (WIRING 1:1)

"125HN" DITTO, BUT SAME DIRECTION OF CONTACTS AT 2 ENDS (WIRING 1:N)

"125HT" DITTO, BUT HOUSING TO 3MM TINNED END

2. NO. OF CONTACTS:

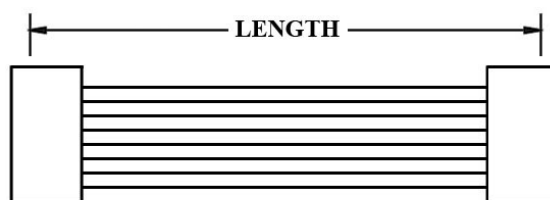
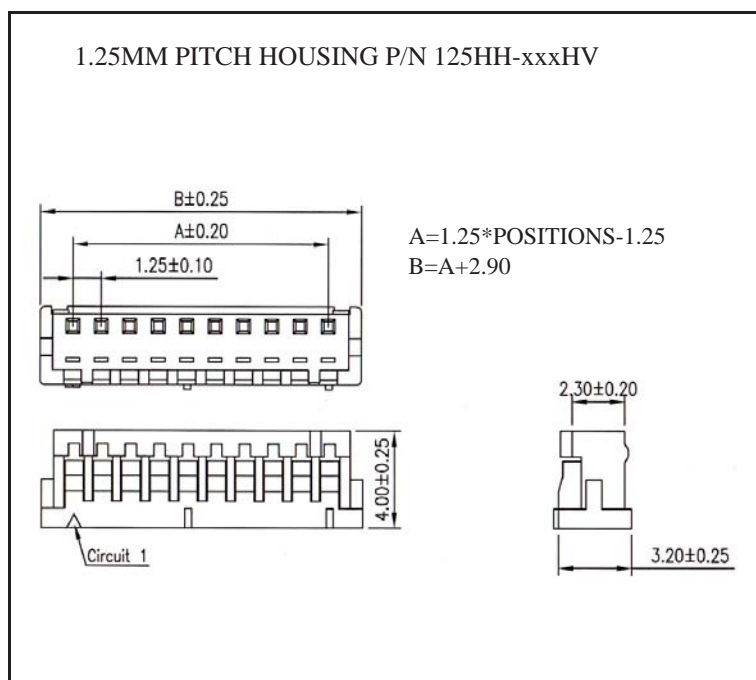
02~15, 20, 30, 40

3. LENGTH IN CM (CENTIMETERS)

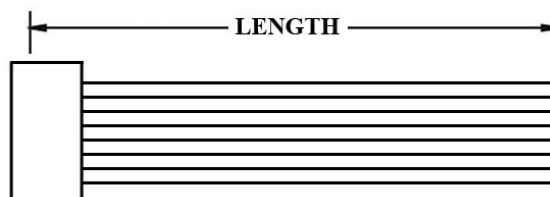
WIRE HARNESS CABLE WITH 2*1.25MM PITCH WIRE-TO-BOARD CRIMPED HOUSINGS (2)



K125HH10



K125HN



K125HT

ORDERING INFORMATION:

P/N K xxxxxx xx C M

1 2 3

1. HOUSING TYPE AT 2 ENDS:

"125HH" 1.25MM PITCH DF13 TYPE HOUSING TO HOUSING (WIRING 1:1)

"125HN" DITTO, BUT SAME DIRECTION OF CONTACTS AT 2 ENDS (WIRING 1:N)

"125HT" DITTO, BUT HOUSING TO 3MM TINNED END

2. NO. OF CONTACTS:

02~15, 20, 30, 40

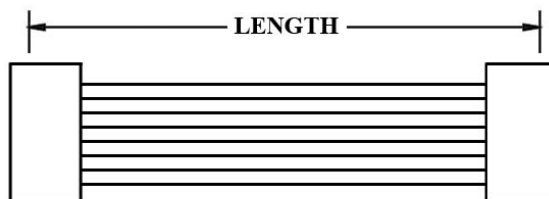
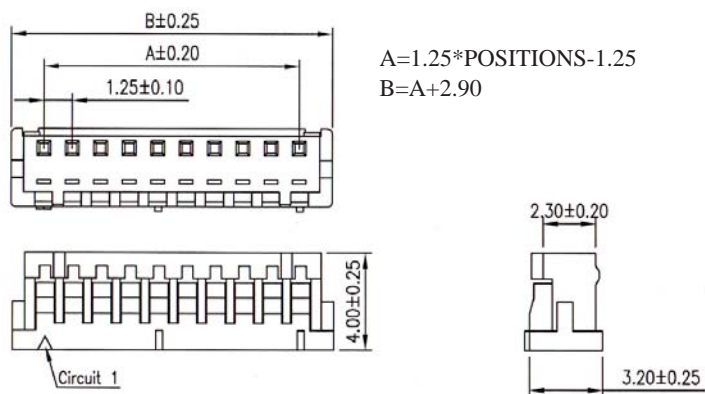
3. LENGTH IN CM (CENTIMETERS)

WIRE HARNESS CABLE WITH 2*1.25MM PITCH WIRE-TO-BOARD CRIMPED HOUSINGS (3)

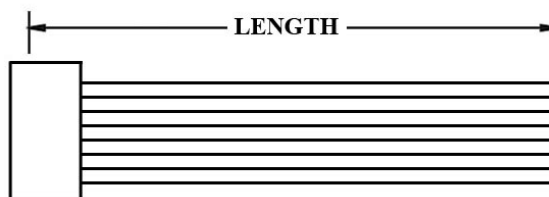


K125HH20

1.25MM PITCH HOUSING P/N 125HH-xxxHV



K125HN



K125HT

ORDERING INFORMATION:

P/N K xxxxxx xx - xx C M

1. HOUSING TYPE AT 2 ENDS:

"125HH" 1.25MM PITCH DF13 TYPE HOUSING TO HOUSING (WIRING 1:1)

"125HN" DITTO, BUT SAME DIRECTION OF CONTACTS AT 2 ENDS (WIRING 1:N)

"125HT" DITTO, BUT HOUSING TO 3MM TINNED END

2. NO. OF CONTACTS:

02~15, 20, 30, 40

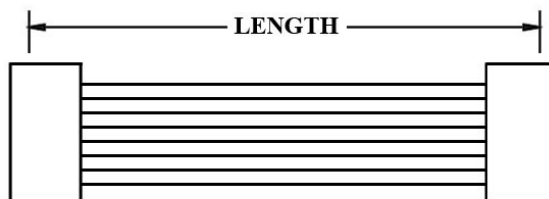
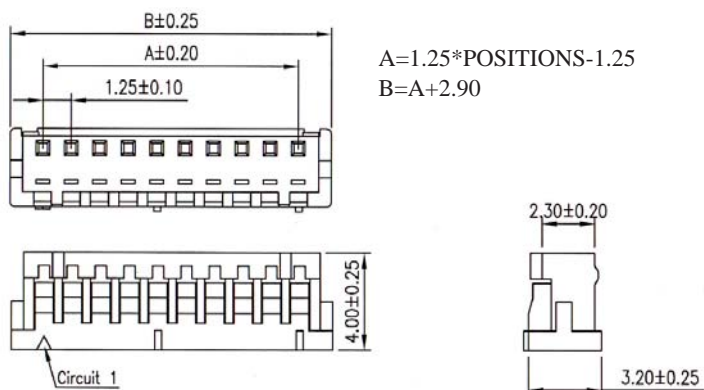
3. LENGTH IN CM (CENTIMETERS)

WIRE HARNESS CABLE WITH 2*1.25MM PITCH WIRE-TO-BOARD CRIMPED HOUSINGS (4)

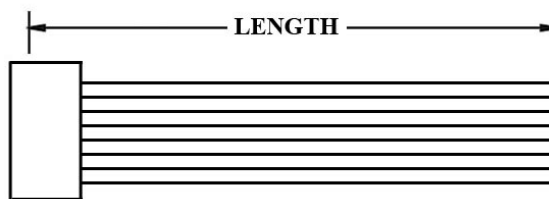


K125HH30

1.25MM PITCH HOUSING P/N 125HH-xxxHV



K125HN



K125HT

ORDERING INFORMATION:

P/N K xxxxxx xx - xx C M

1. HOUSING TYPE AT 2 ENDS:

"125HH" 1.25MM PITCH DF13 TYPE HOUSING TO HOUSING (WIRING 1:1)

"125HN" DITTO, BUT SAME DIRECTION OF CONTACTS AT 2 ENDS (WIRING 1:N)

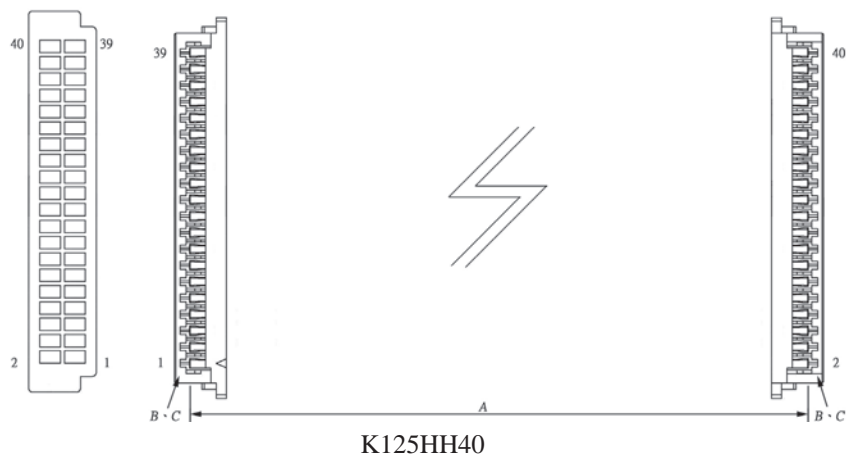
"125HT" DITTO, BUT HOUSING TO 3MM TINNED END

2. NO. OF CONTACTS:

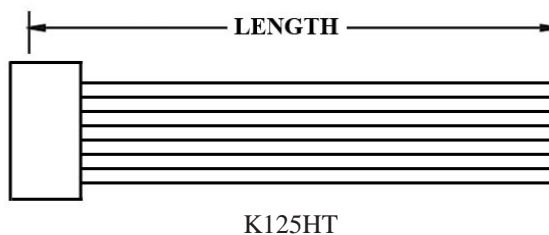
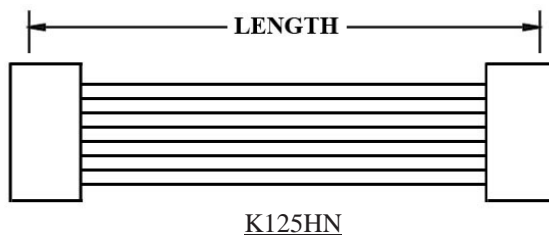
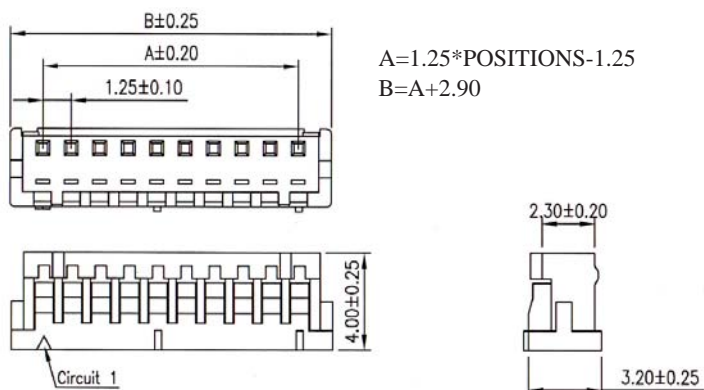
02~15, 20, 30, 40

3. LENGTH IN CM (CENTIMETERS)

WIRE HARNESS CABLE WITH 2*1.25MM PITCH WIRE-TO-BOARD CRIMPED HOUSINGS (5)



1.25MM PITCH HOUSING P/N 125HH-xxxHV



ORDERING INFORMATION:

P/N **K** 1 2 3 **CM**

1. HOUSING TYPE AT 2 ENDS:

"125HH" 1.25MM PITCH DF13 TYPE HOUSING TO HOUSING (WIRING 1:1)

"125HN" DITTO, BUT SAME DIRECTION OF CONTACTS AT 2 ENDS (WIRING 1:N)

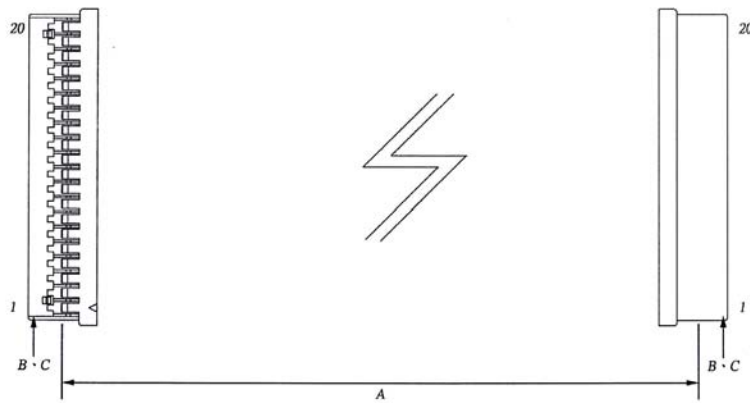
"125HT" DITTO, BUT HOUSING TO 3MM TINNED END

2. NO. OF CONTACTS:

02~15, 20, 30, 40

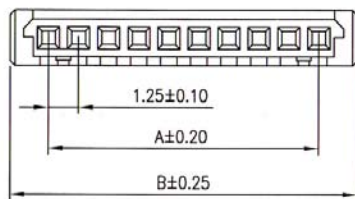
3. LENGTH IN CM (CENTIMETERS)

WIRE HARNESS CABLE WITH 2*1.25MM PITCH WIRE-TO-BOARD CRIMPED HOUSINGS



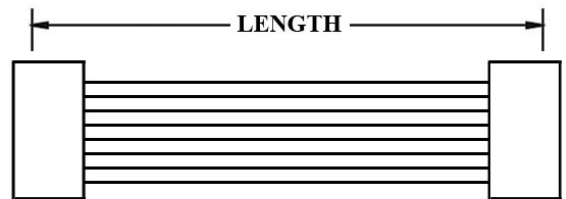
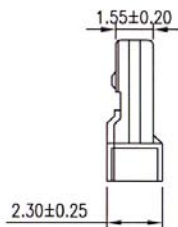
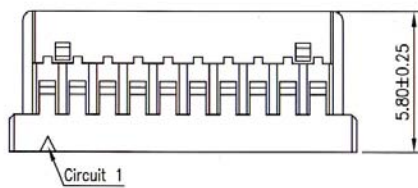
K125HS

1.25MM PITCH HOUSING P/N 125HS-xxxHV

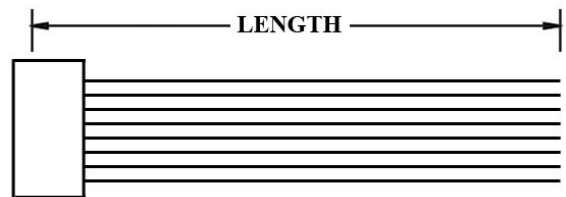


$$A = 1.25 * \text{POSITIONS} - 1.25$$

$$B = A + 3.20$$



K125HP



K125HU

ORDERING INFORMATION:

P/N K 1 2 3 xxxxxx - xx C M

1. HOUSING TYPE AT 2 ENDS:

"125HS" 1.25MM PITCH DF14 TYPE HOUSING TO HOUSING (WIRING 1:1)

"125HP" DITTO, BUT SAME DIRECTION OF CONTACTS AT 2 ENDS (WIRING 1:N)

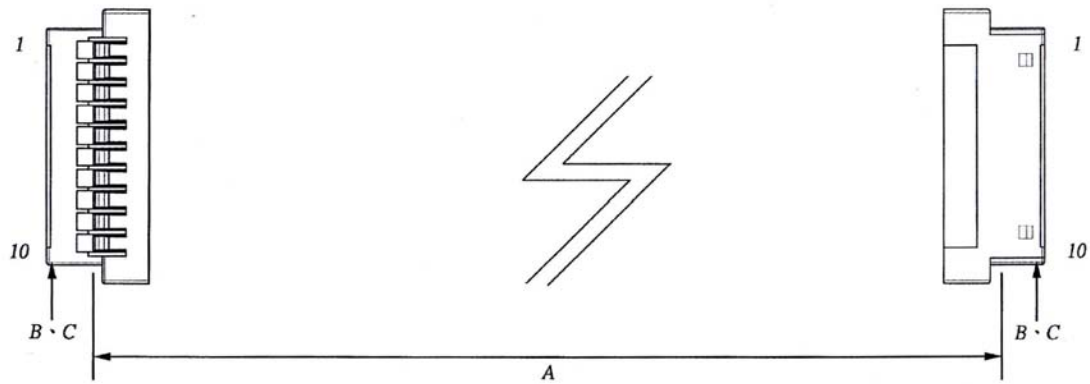
"125HU" DITTO, BUT HOUSING TO 3MM TINNED END

2. NO. OF CONTACTS:

02, 03, 04, 05, 06, 07, 08, 09, 10, 11, 12, 13, 14, 15, 20, 25, 30

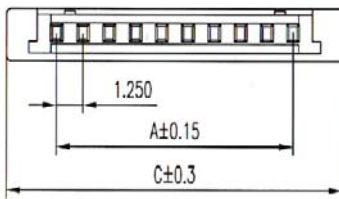
3. LENGTH IN CM (CENTIMETERS)

WIRE HARNESS CABLE WITH 2*1.25MM PITCH WIRE-TO-BOARD CRIMPED HOUSINGS

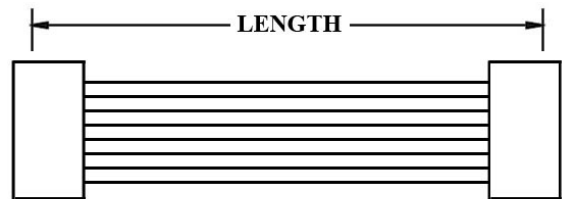
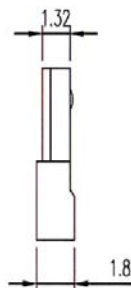
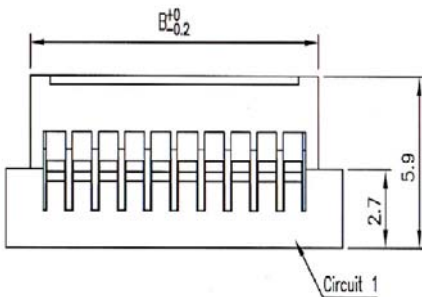


K125JA

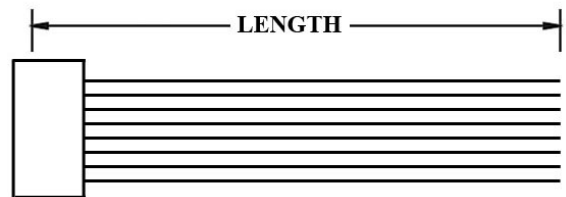
1.25MM PITCH HOUSING P/N 125JA-xxxHB



No. of Contacts	Dimensions(mm)		
	A	B	C
20	23.75	26.30	28.50
30	36.25	38.80	41.00



K125JN



K125JT

ORDERING INFORMATION:

P/N K 1 2 3 CM

1. HOUSING TYPE AT 2 ENDS:

"125JA" 1.25MM PITCH FI TYPE HOUSING TO HOUSING (WIRING 1:1)

"125JN" DITTO, BUT SAME DIRECTION OF CONTACTS AT 2 ENDS (WIRING 1:N)

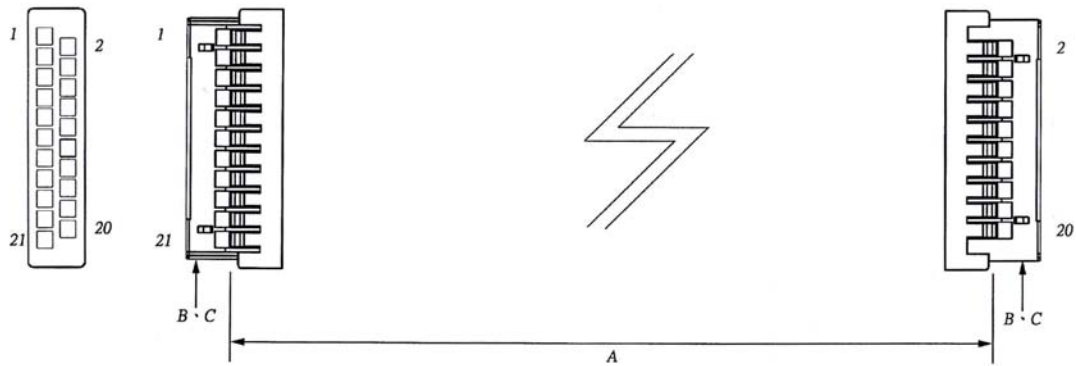
"125JT" DITTO, BUT HOUSING TO 3MM TINNED END

2. NO. OF CONTACTS:

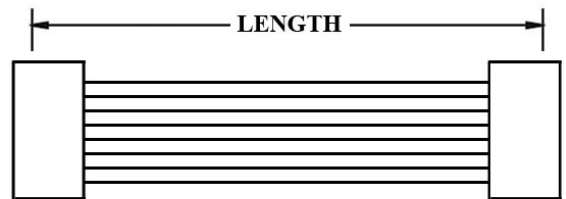
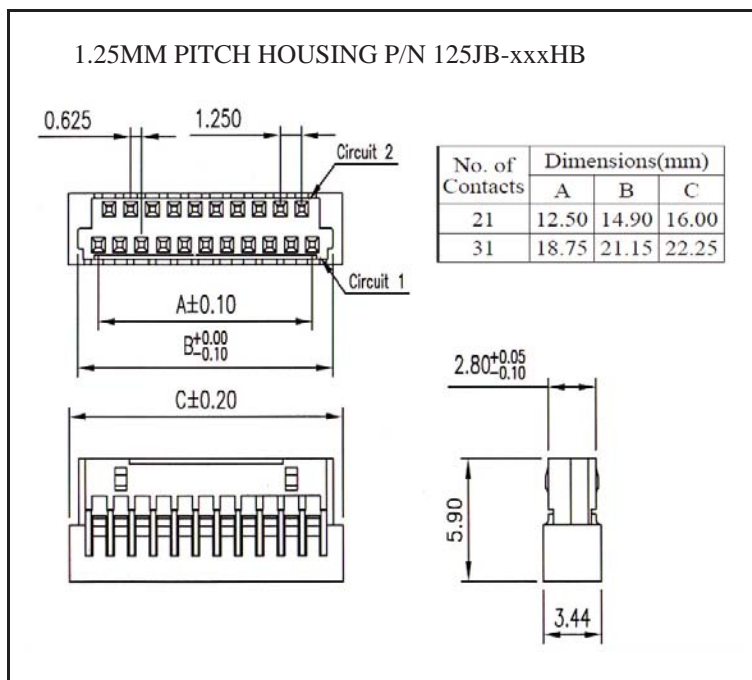
20, 30

3. LENGTH IN CM (CENTIMETERS)

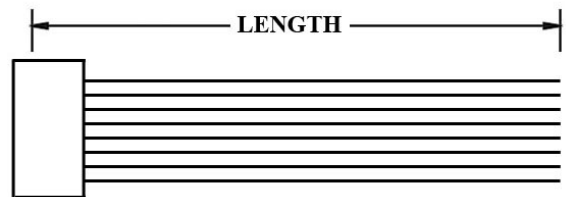
WIRE HARNESS CABLE WITH 2*1.25MM PITCH WIRE-TO-BOARD CRIMPED HOUSINGS



K125JB



K125JP



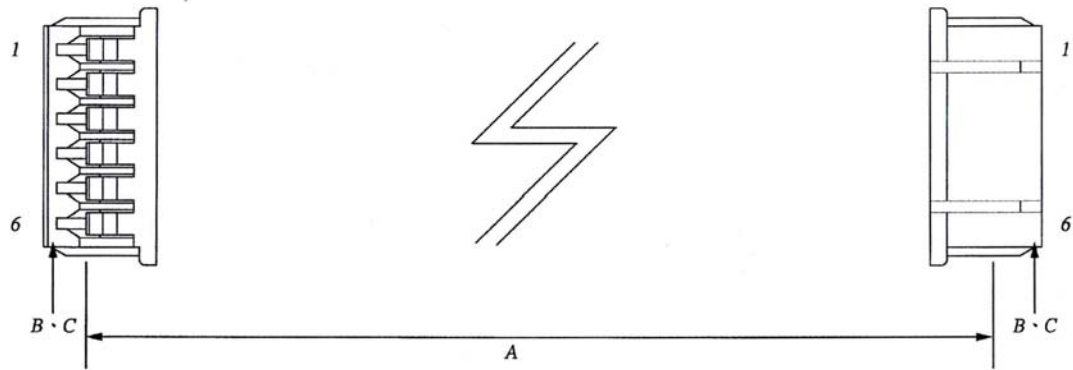
K125JU

ORDERING INFORMATION:

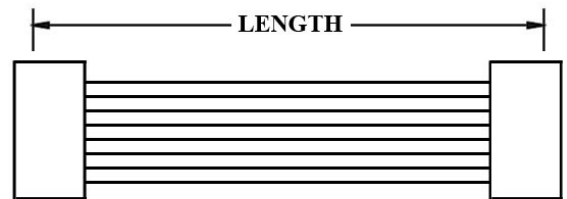
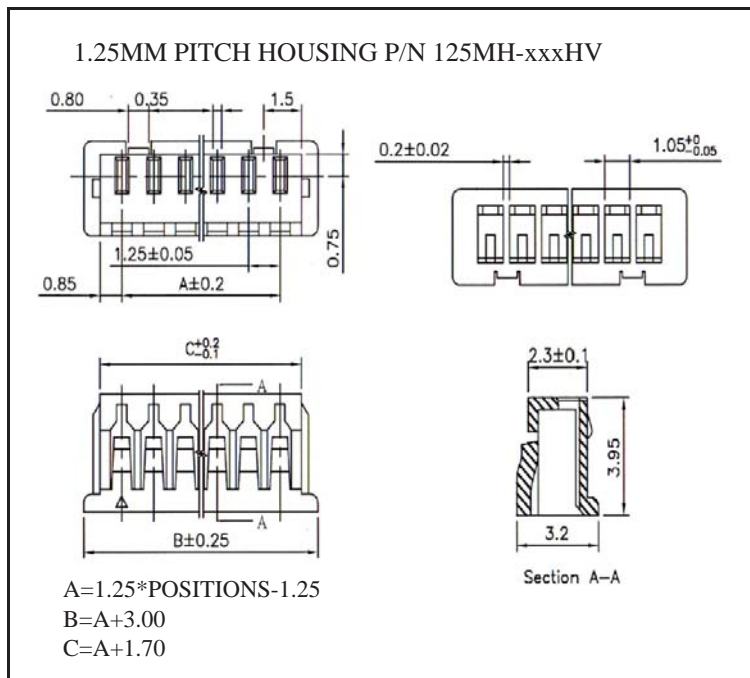
P/N **K** 1 2 3 C M

- HOUSING TYPE AT 2 ENDS:
 "125JB" 1.25MM PITCH FI TYPE HOUSING TO HOUSING (WIRING 1:1)
 "125JP" DITTO, BUT SAME DIRECTION OF CONTACTS AT 2 ENDS (WIRING 1:N)
 "125JU" DITTO, BUT HOUSING TO 3MM TINNED END
- NO. OF CONTACTS:
 21, 31
- LENGTH IN CM (CENTIMETERS)

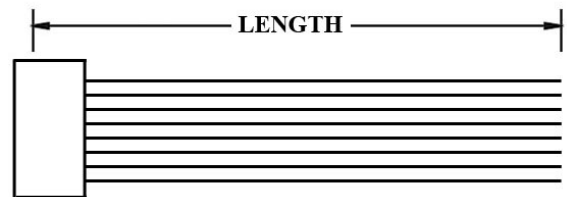
WIRE HARNESS CABLE WITH 2*1.25MM PITCH WIRE-TO-BOARD CRIMPED HOUSINGS



K125MH



K125MQ



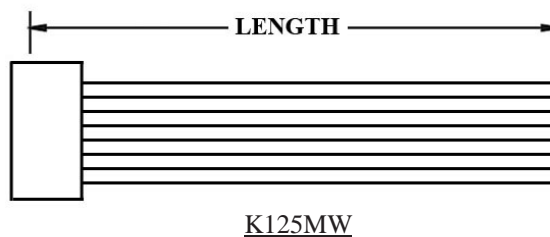
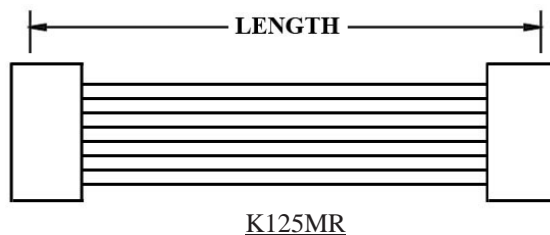
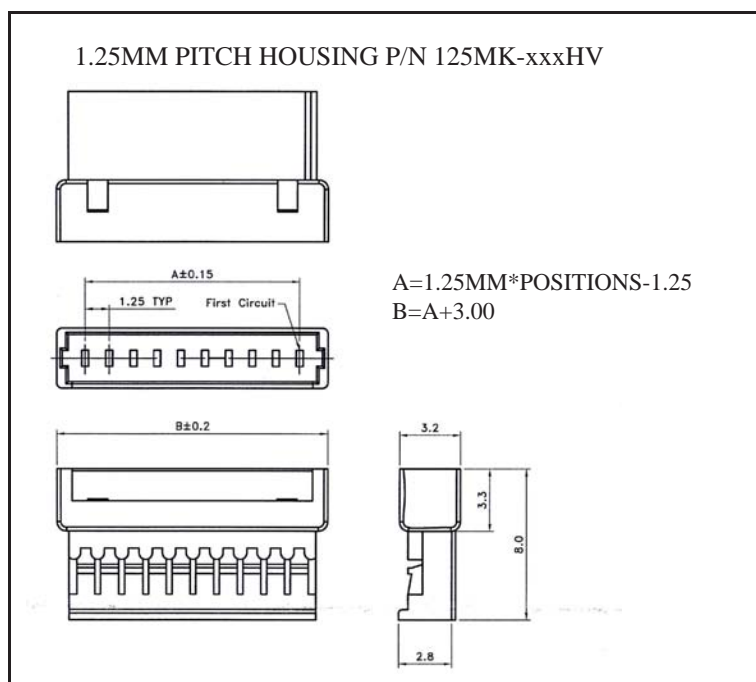
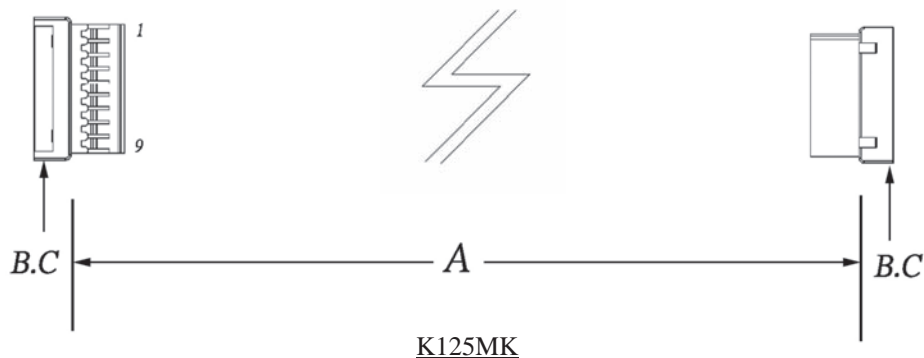
K125MV

ORDERING INFORMATION:

P/N K 1 2 3 CM

- HOUSING TYPE AT 2 ENDS:
 "125MH" 1.25MM PITCH MX TYPE HOUSING TO HOUSING (WIRING 1:1)
 "125MQ" DITTO, BUT SAME DIRECTION OF CONTACTS AT 2 ENDS (WIRING 1:N)
 "125MV" DITTO, BUT HOUSING TO 3MM TINNED END
- NO. OF CONTACTS:
 02, 03, 04, 05, 06, 07, 08, 09, 10, 11, 12, 13, 14, 15
- LENGTH IN CM (CENTIMETERS)

WIRE HARNESS CABLE WITH 2*1.25MM PITCH WIRE-TO-BOARD CRIMPED HOUSINGS

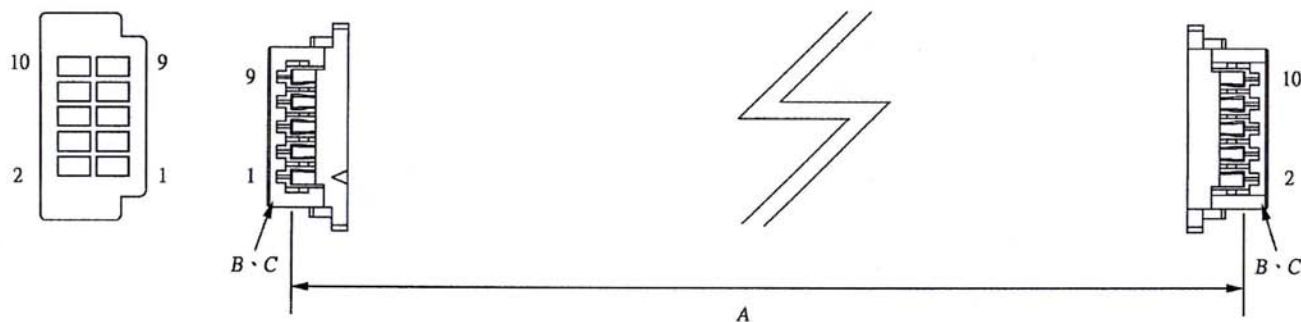


ORDERING INFORMATION:

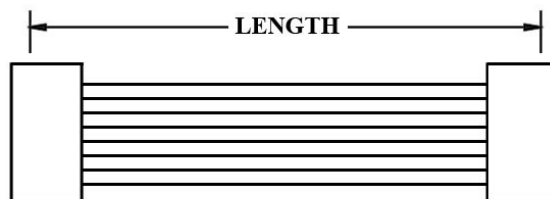
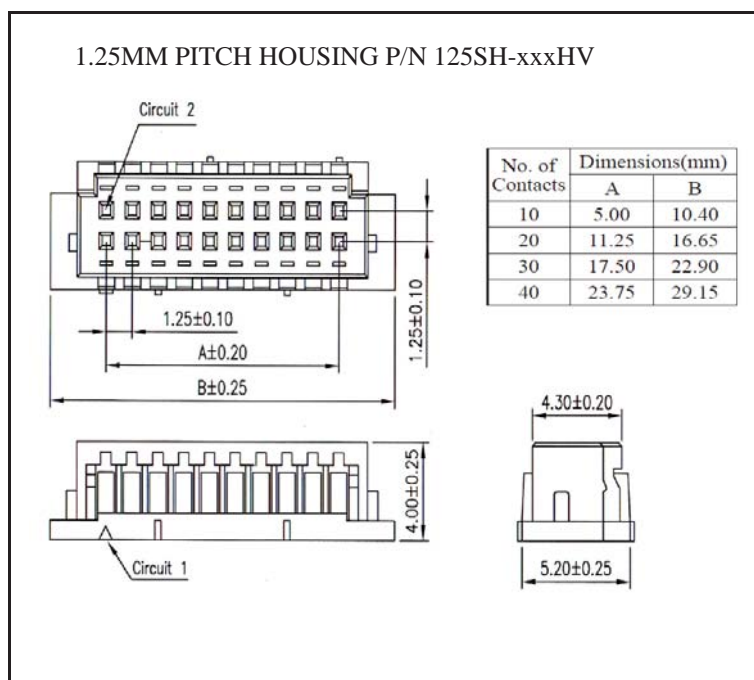
P/N **K** 1 2 3 C M

1. HOUSING TYPE AT 2 ENDS:
 "125MK" 1.25MM PITCH SINGLE ROW HOUSING TO HOUSING (WIRING 1:1)
 "125MR" DITTO, BUT SAME DIRECTION OF CONTACTS AT 2 ENDS (WIRING 1:N)
 "125MW" DITTO, BUT HOUSING TO 3MM TINNED END
2. NO. OF CONTACTS:
 02~15
3. LENGTH IN CM (CENTIMETERS)

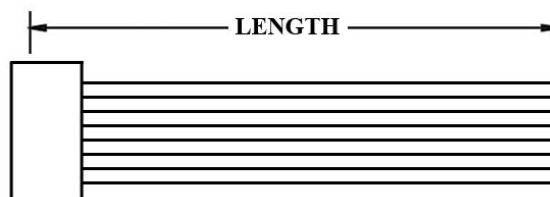
WIRE HARNESS CABLE WITH 2*1.25MM PITCH WIRE-TO-BOARD CRIMPED HOUSINGS (1)



K125SH10



K125SN



K125ST

ORDERING INFORMATION:

P/N K 125SH10 - 10 C M

1. HOUSING TYPE AT 2 ENDS:

"125SH" 1.25MM PITCH DF13 TYPE HOUSING TO HOUSING (WIRING 1:1)

"125SN" DITTO, BUT SAME DIRECTION OF CONTACTS AT 2 ENDS (WIRING 1:N)

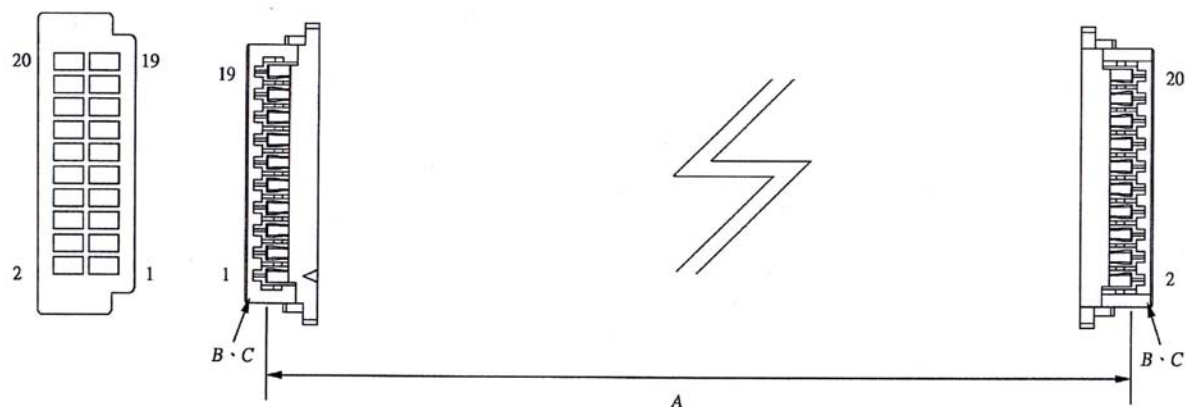
"125ST" DITTO, BUT HOUSING TO 3MM TINNED END

2. NO. OF CONTACTS:

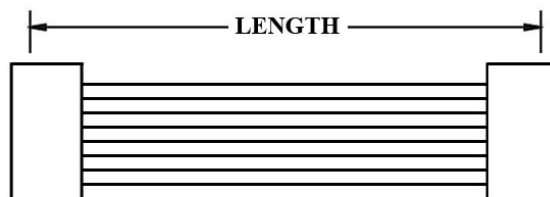
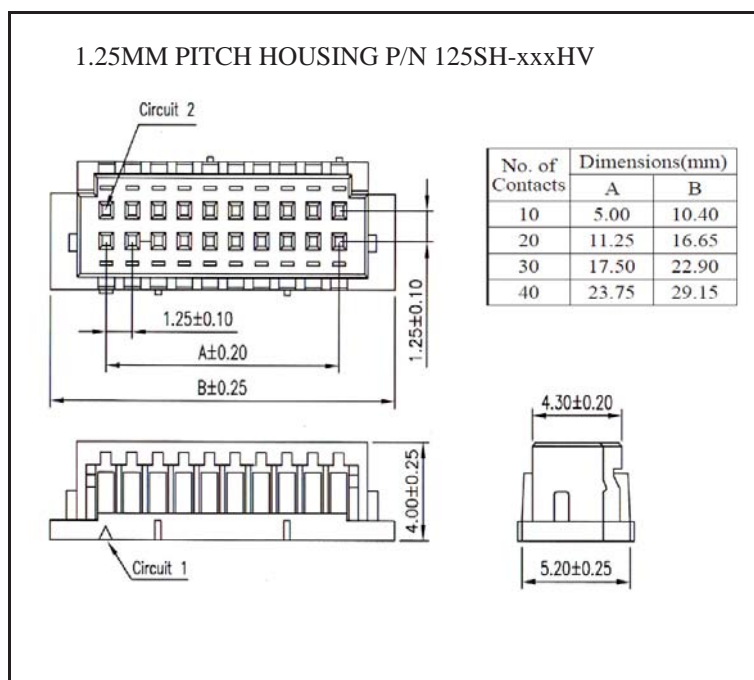
10, 20, 30, 40

3. LENGTH IN CM (CENTIMETERS)

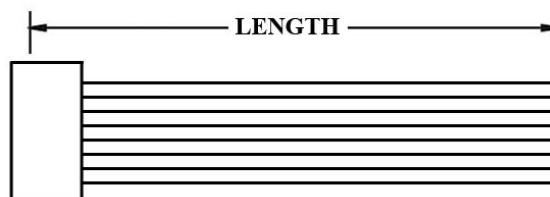
WIRE HARNESS CABLE WITH 2*1.25MM PITCH WIRE-TO-BOARD CRIMPED HOUSINGS (2)



K125SH20



K125SN



K125ST

ORDERING INFORMATION:

P/N K 1 2 3 xxxxxx - xx CM

1. HOUSING TYPE AT 2 ENDS:

"125SH" 1.25MM PITCH DF13 TYPE HOUSING TO HOUSING (WIRING 1:1)

"125SN" DITTO, BUT SAME DIRECTION OF CONTACTS AT 2 ENDS (WIRING 1:N)

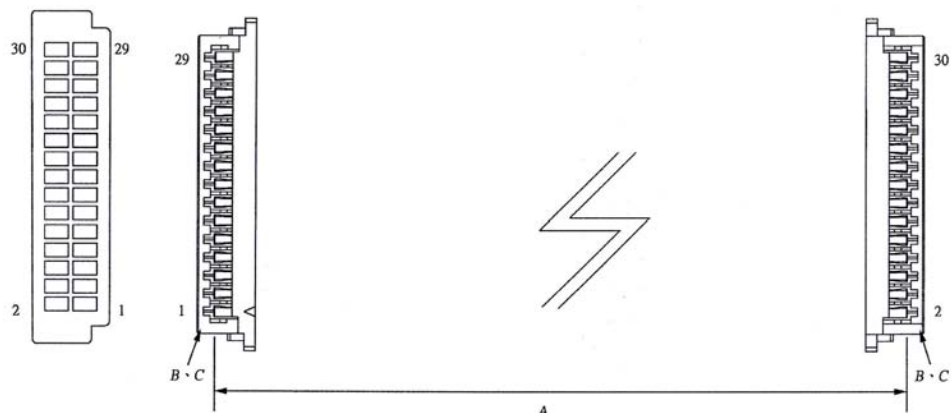
"125ST" DITTO, BUT HOUSING TO 3MM TINNED END

2. NO. OF CONTACTS:

10, 20, 30, 40

3. LENGTH IN CM (CENTIMETERS)

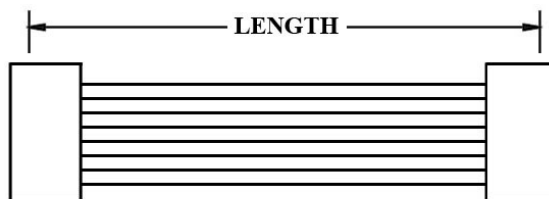
WIRE HARNESS CABLE WITH 2*1.25MM PITCH WIRE-TO-BOARD CRIMPED HOUSINGS (3)



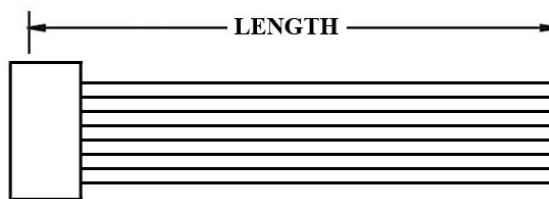
K125SH30

1.25MM PITCH HOUSING P/N 125SH-xxxHV

No. of Contacts	Dimensions(mm)	
	A	B
10	5.00	10.40
20	11.25	16.65
30	17.50	22.90
40	23.75	29.15



K125SN



K125ST

ORDERING INFORMATION:

P/N K 123 123 123 C M

1. HOUSING TYPE AT 2 ENDS:

"125SH" 1.25MM PITCH DF13 TYPE HOUSING TO HOUSING (WIRING 1:1)

"125SN" DITTO, BUT SAME DIRECTION OF CONTACTS AT 2 ENDS (WIRING 1:N)

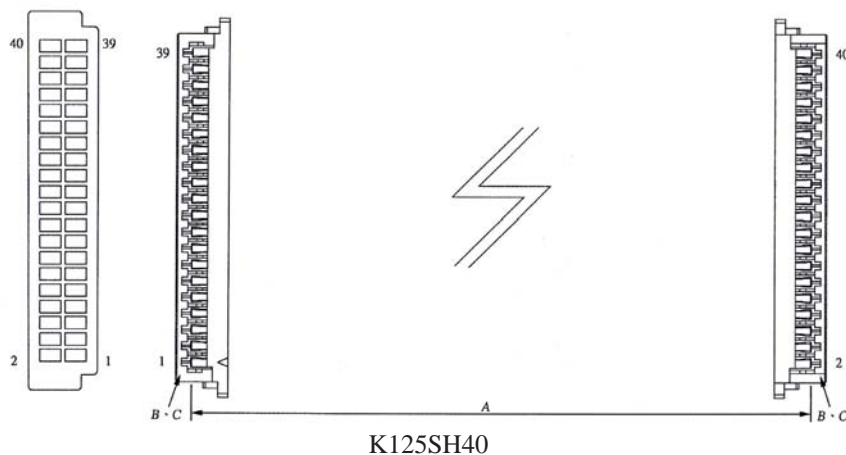
"125ST" DITTO, BUT HOUSING TO 3MM TINNED END

2. NO. OF CONTACTS:

10, 20, 30, 40

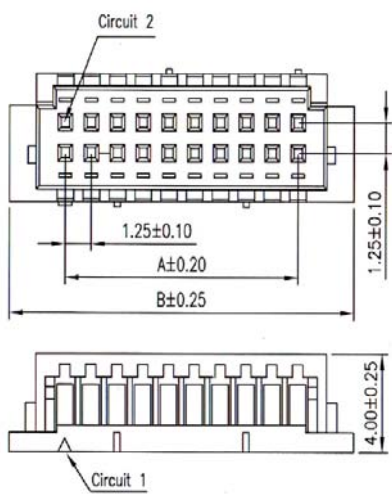
3. LENGTH IN CM (CENTIMETERS)

WIRE HARNESS CABLE WITH 2*1.25MM PITCH WIRE-TO-BOARD CRIMPED HOUSINGS (4)

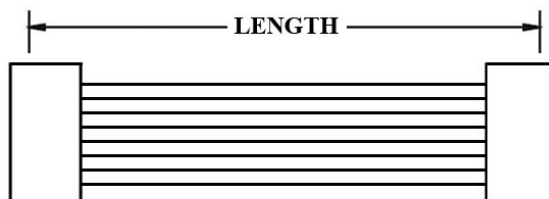
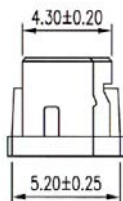


K125SH40

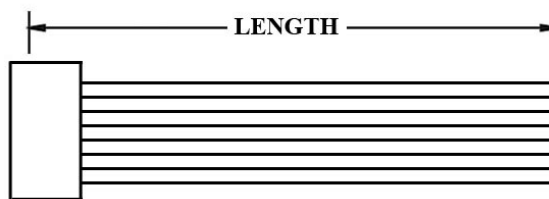
1.25MM PITCH HOUSING P/N 125SH-xxxHV



No. of Contacts	Dimensions(mm)	
	A	B
10	5.00	10.40
20	11.25	16.65
30	17.50	22.90
40	23.75	29.15



K125SN



K125ST

ORDERING INFORMATION:

P/N K 1 2 3 xxxxxx - xx C M

1. HOUSING TYPE AT 2 ENDS:

"125SH" 1.25MM PITCH DF13 TYPE HOUSING TO HOUSING (WIRING 1:1)

"125SN" DITTO, BUT SAME DIRECTION OF CONTACTS AT 2 ENDS (WIRING 1:N)

"125ST" DITTO, BUT HOUSING TO 3MM TINNED END

2. NO. OF CONTACTS:

10, 20, 30, 40

3. LENGTH IN CM (CENTIMETERS)